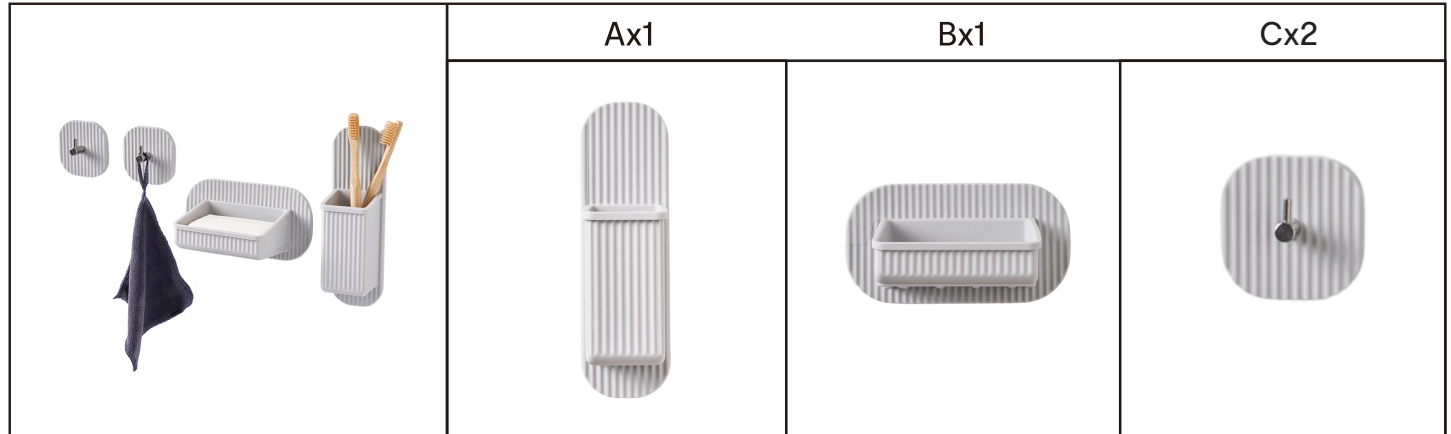


Assembly Instructions

K: 43631513/T: 71771168 Silicone Accessory Set

ATTACHMENT INSTRUCTION: Suitable for Smooth tile, shiny marble, glass, or mirrors. Not suitable for: Timber/wood, matte textured tiles, undulated tiles, leather, painted or unpainted drywall/plasterboard, over grout lines, or mosaic tiles.

Thoroughly clean the surface and allow it to dry. Peel off the backing film. Carefully stick the product to the surface, ensuring it is level. Press firmly for 30 seconds and wait 24 hours before use.



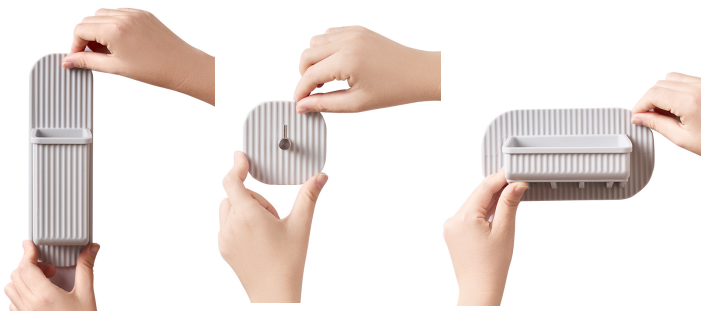
Step 1 : Clean the surface.



Step 2 : Remove the backing protective film.



Step 4: Press the backing firmly on the wall.



Step 5: Wait for 24 hours before use.



REMOVAL: Can be removed with hair dryer, heat the tape for 3-5 minutes to make it warm, then remove residual with methylated spirits.