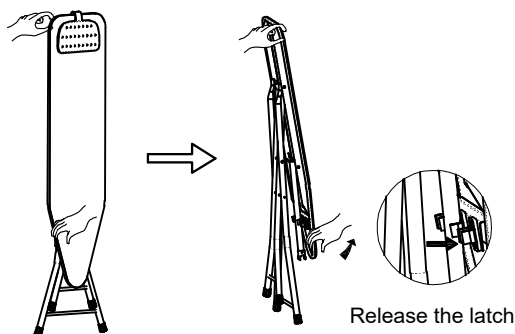


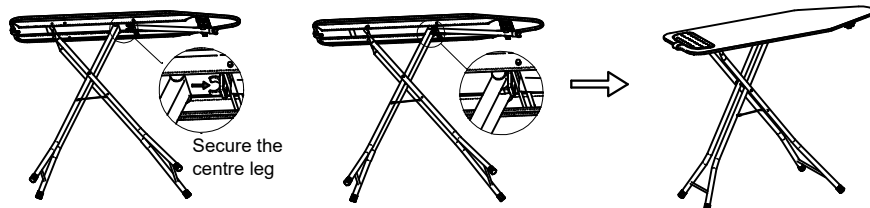
ASSEMBLY INSTRUCTIONS

K:43-625-376 | T:71-726-243
2 in 1 ADJUSTABLE IRONING BOARD

When ironing flat: How to open the ironing board.

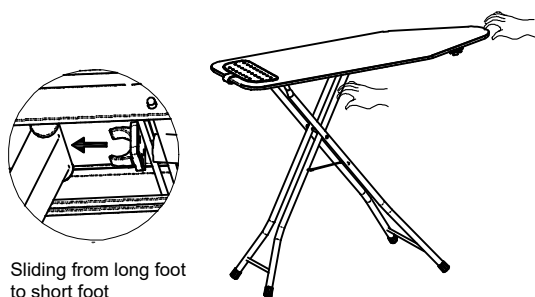


Step①: Pull the panel outward to release the latch

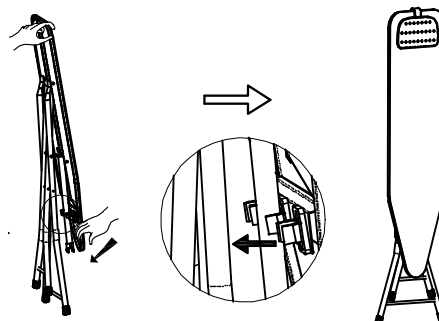


Step②: Slide the centre leg towards the tip of the panel until it locks into the middle slot at the bottom of the panel

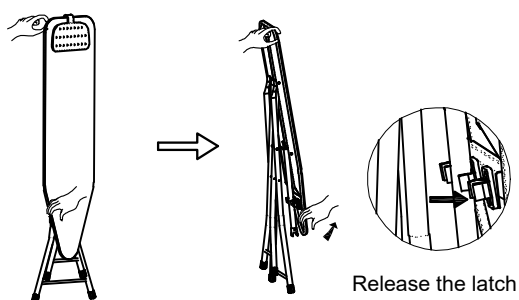
When ironing flat: How to fold the ironing board



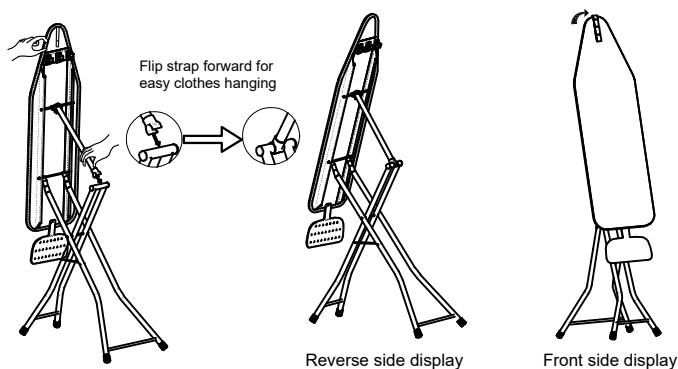
Step①: Slide the centre leg towards the rear of the panel until all legs are aligned



For steaming use: How to open the ironing board



Step①: Pull the panel outward to release the latch



Step②: Lock the latch of the support rod onto the crossbar at the top of the centre leg

For steaming use: How to fold the ironing board

