

209x209mm

正面

反面

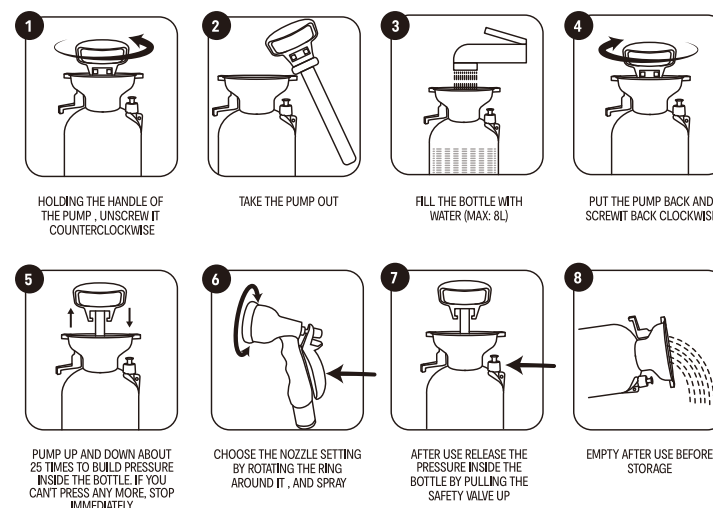
## PORTABLE SHOWER

keycode: 43625369



Made in China

### Product Introduction



### 10 Spray Modes

There are 10 nozzle settings to choose from according to preference and use.



the soaker mode is meant to be used for filling up containers of water.



### Spare Rubber Rings

The box includes a set of spare rubber rings. Please keep the spare rubber rings at safe place for future use. The pictures below show where each one goes in case they need to be replaced in the future.



### Connecting The Shower Head To The Hose



You should hear a click when you connect them correctly. This way there will be no gaps between the shower head and the hose so it won't leak.

### Locking The Shower For Hands-free Use



1. The shower can be used hands-free, by locking the metal ring on the back of the shower gun.
2. Adjust the water flow as desired by screwing or unscrewing the adjuster knob on the back of the trigger.

### Filling up with water

1. Unscrew the hand pump as a single piece. Having the handle all the way down, in the closed position, hold and twist the handle unscrewing it counterclockwise.
2. The whole pump will be removed and you will see the inside of the black bottle. Then start to fill the water inside, do not add the water too full, the maximum water volume does not exceed 8L, to leave room for the use of the pump.
3. After checking the pump to make sure no grass or dirt is stuck to it, place the pump in the tank and tighten it. When using the spray, the sprayer can be re-pumped as needed to maintain the spray power.
4. Do not unscrew the textured ring in the center of the funnel as it will only open the inside of the hand pump, not the funnel, and you won't be able to fill up with water.



### Care Instructions

1. Release pressure: Your sprayer is equipped with a pressure relief/release valve (See Product Introduction 7). Lift valve when releasing pressure and hold until air is completely discharged.
2. Remove the pump, wipe the surface dry, empty the bottle of remaining water, turn the bottle upside down and place it in a dry place. At the same time, clean the nozzle and spray hole to prevent blockage affecting the water effect.
3. Ensure items are clean and 100% dry before storing to prevent mould and mildew. Store in a dry place.

### WARNING

For safe use of this product you must read and follow all instructions. Incorrect use or failure to follow instructions may result in explosive failure, causing serious eye or other injury.

Take care avoid filling the liquid to the full(max:8L), leaving adequate space for pressure to build up. If you can't press any more, stop immediately. Never pressurize sprayer by any means other than the original pump. When using the watering can, it is necessary to maintain a vertical posture and not tilt or invert.

Do not leave a pressurized sprayer in the hot sun. Heat can cause pressure build-up resulting in possible explosion. Do not store or leave water in tank after use.

Never stand with face or body over top of tank when pumping or loosening pump to prevent ejecting pump assembly or water from striking and injuring you. Never use any tool to remove pump if there is pressure in sprayer. Do not attempt to modify this sprayer.

Replace parts only with manufacturer's original parts. Never spray Chemical as some chemicals may be hazardous when used with this sprayer.