

# anko

## High-speed Hair Dryer



Model No.: DT300  
Rev 1

**Note:** The specifications and/or components of this appliance are subject to change without prior notice.



<b>1</b>	<b>Warnings.....</b>	<b>4</b>
<b>2</b>	<b>Important Safeguards .....</b>	<b>4</b>
<b>3</b>	<b>Components .....</b>	<b>8</b>
<b>4</b>	<b>Operation Procedure .....</b>	<b>8</b>
4.1	Air Concentrator .....	9
4.2	Heat settings .....	10
4.3	Drying Hair .....	10
4.4	Over Temperature Cut Off Safety Switch .....	11
<b>5</b>	<b>Cleaning.....</b>	<b>11</b>
5.1	Main Appliance .....	12
5.2	Rear Grille .....	12
5.3	Air Concentrator .....	13
<b>6</b>	<b>Completion and Storage.....</b>	<b>13</b>
<b>7</b>	<b>Troubleshooting.....</b>	<b>14</b>
<b>8</b>	<b>Warranty Against Defect .....</b>	<b>15</b>

**READ AND SAVE THESE INSTRUCTIONS FOR  
FUTURE REFERENCE**

# 1 Warnings

This appliance is designed for Drying Human Hair only.

**Do Not** use this product to dry animal hair - fur or artificial hair.

**Do Not** use on damaged or bleached hair.

Before using this appliance, read and follow all warnings and instructions in this manual, even if you are familiar with this product.

This appliance is not intended for use by persons (including children) with reduced physical, sensory or mental capabilities, or lack of experience and knowledge, unless they have been given supervision or instruction concerning use of the appliance by a person responsible for their safety.

Children should be supervised to ensure that they do not play with the appliance.

## 2 Important Safeguards



Please read this instruction manual carefully before first use. It is advisable to keep this instruction manual for future reference.

The appliance emits very hot air. Persons insensitive to heat must be careful when using the appliance.

The unattended use by children or incapacitated persons may be dangerous.

Fully unwind the power cord before use. Ensure there are no knots or kinks in the power cord.

**DO NOT** leave the appliance unattended when plugged in. Always switch off and unplug from the power point when unattended and after use.

Take care that children cannot touch the appliance when in use, and make sure they cannot reach and pull the power cord.



**Burn Hazard.** Keep appliance out of reach from young children, particularly during use and cool down.

**Always** place the appliance on a heat-resistant, stable flat surface.

To protect against the risk of electric shock, do not immerse the appliance, cord or plug in water or other liquids.

**DO NOT** cover the appliance while in use. The product will overheat and may cause fire, electrocution, damage to property or injury to persons.



**DO NOT** use or store the product near sinks, baths or showers containing water or near running water.

**WARNING: DO NOT** use this appliance near bathtubs, showers, basins, or other vessels containing water.

If the appliance is used in a bathroom, unplug it after use since the proximity of water presents a hazard even when the appliance is switched off.

**DO NOT** use this appliance if it has been dropped or any part of the appliance (including the power cord and plug) has been damaged.

If the supply cord is damaged, do not use. Any repairs to the product must be carried out by qualified electrical person only, or the product must be disposed of.

**DO NOT** use this appliance with an extension lead, power board or double adaptor etc. The plug must be inserted directly into the power point.

The use of accessories not intended for use with this appliance may cause injuries to the user or damage to the appliance.

**DO NOT** place this unit on other appliances, on uneven surfaces or where it could be subject to heat sources (e.g. radiators or stoves), direct sunlight, excessive dust.

This appliance should not be placed near a hot gas or electrical burner or placed in a heated oven.

**DO NOT** allow the power cord to hang over the edge of the work surface or to come into contact with stoves or other hot surfaces.

The appliance should always be switched off before disconnecting from the power supply. Never pull the cord to disconnect the power point. Grasp the plug body.

There are no user serviceable parts in this appliance.

If this appliance is to be used by a third party, please supply the instruction manual with it.

Ensure children and babies do not play with plastic bags or any of the packaging material.

**DO NOT** touch or operate the appliance with wet hands or wet feet to reduce the risk of electric shock.

**DO NOT** carry the appliance by the power cord.

Never reach or touch an appliance which has fallen into water. Unplug from the mains power point immediately.

**DO NOT** insert any foreign objects into the appliance.

**DO NOT** run the appliance on an external timer or separate remote-control system.

Keep hair away from the rear grille of the appliance. Hair may be sucked into the rear of the appliance causing a blockage.

Never block the rear grille of the appliance as this may lead to overheating. If the rear grille becomes blocked, stop using the appliance immediately and remove the blockage. Refer to the "Cleaning" section in this manual.

Ensure the concentrator nozzle is free of blockages to prevent overheating and for proper use.

The concentrator nozzle will become hot during use. Allow it to completely cool before touching and removing it.

Position the power cord properly so that it will not be walked on, tripped over, or pinched by items placed on or against it.

**DO NOT** store or use the appliance near or in high temperature areas.

**ONLY** for indoor domestic use. Industrial or commercial use invalidates the warranty.

No liability can be accepted for any damage caused by non-compliance with these instructions or any other improper use or mishandling of appliance.

For additional protection, it is strongly recommended that the use of a residual current device (RCD) / safety switch with a tripping current not exceeding 30mA be used on the circuit supplying this product. If you are unsure if your home has this device, please contact your nearest Electrical Contractor

## **IMPORTANT**

### **Caution Risk of Burning:**



This appliance's air outlet surface gets very hot during use.

Only hold by the handle and only touch the On / Off and Heat Selector Switch.

**Burn Hazard.** Keep appliance out of reach from young children, particularly during use and cool down.

**Always** place the appliance on a heat-resistant, stable flat surface.

Avoid touching the bare skin with the air outlet nozzle.



At the end of the appliance's life, it must be disposed of correctly.

Contact your local waste management authority for more information on Recycling and disposal facilities available in your area.

Do not dispose of electrical appliances as unsorted municipal waste, use separate collection facilities.

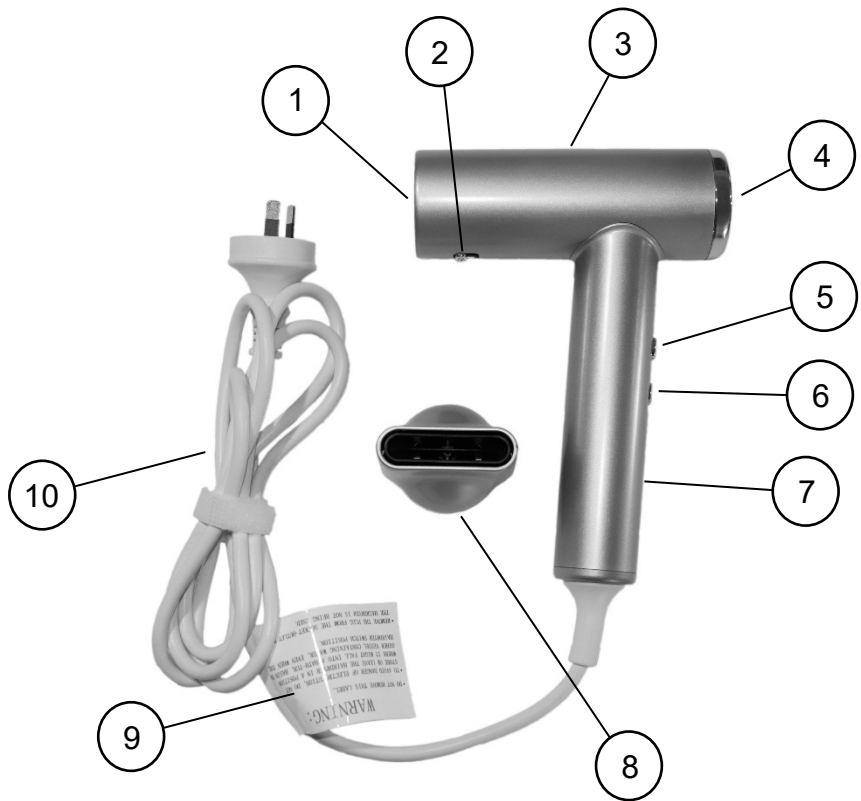
Contact your local council for information regarding the collection systems available.

If electrical appliances are disposed of in landfills or dumps, hazardous substances can leak into the groundwater and get into the food chain, damaging your health and well-being.

Please contact your local council or regional authority for more information on collection, reuse, and recycling programmes.

## **Read and Save These Instructions**

### 3 Components



1	Hot Air Outlet	6	Heat Selector Button
2	Air Concentrator Release Button	7	Handle
3	Main Unit	8	Air Concentrator Nozzle
4	Rear Grille Air Inlet	9	Warning Tag
5	On / Off Speed Selector Switch	10	Power Cord

### 4 Operation Procedure

**WARNING:** Never touch the hot air outlet.

**NOTE:** On the first few times using the appliance, you will notice a smell coming from the appliance.

This is no cause for alarm as it is the heating elements “baking in”.

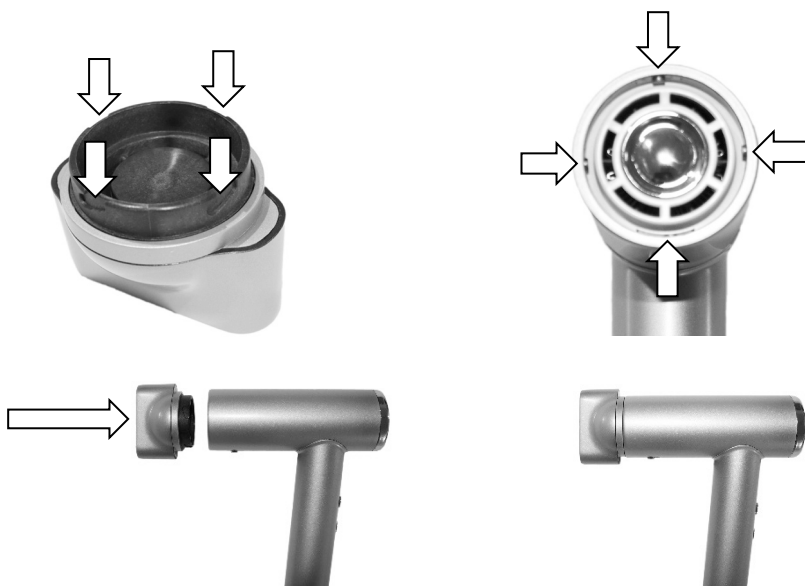
**Important:** Only hold the appliance by the handle.

Do not place the appliance on a surface that is not heat resistant.

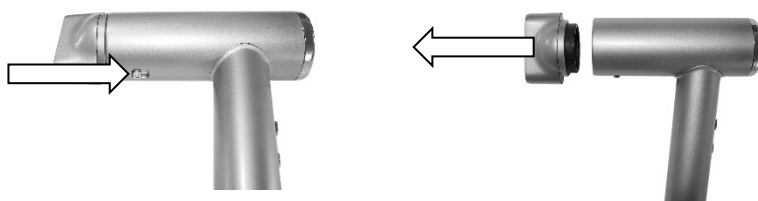
## 4.1 Air Concentrator

The appliance is supplied with an Air Concentrator that can be attached or removed depending on your requirement.

To attach the Air Concentrator, align the four grooves in the back of the Air Concentrator with the four pins inside the nozzle of the hair dryer and push in firmly until it locks in place.



To remove the Air Concentrator, slide the release button backward and then pull the air concentrator straight out.



**Note:** The Air Concentrator can be rotated to your desired angle.



## 4.2 Heat settings

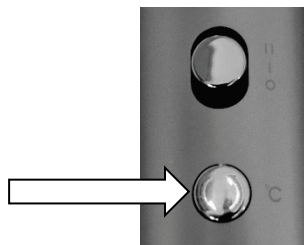
There are four heat settings to choose from.

Cool (no heat), Low Heat, Medium Heat and High Heat.

The default setting when using the appliance for the first time is “Cool” (No Heat).

Each press and release of the heat selector button will cycle through all settings and will be identified with the following Coloured Light.

Cool Setting:	Blue Indicator Light
Low Heat Setting:	Green Indicator Light
Medium Heat Setting:	Orange Indicator Light
High Heat Setting:	Red Indicator Light

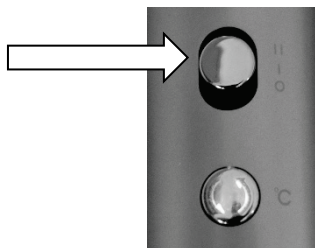


If using any of the Heat settings, other than Cool, press and hold the Heat Selector button in for approximately 2 seconds and it will revert to Cool setting without having to cycle through all the heat settings first.

## 4.3 Drying Hair

- Fully unwind the power cord ensuring there are no kinks or knots in the power cord.
- Ensure the ON/OFF switch is in the OFF “O” position.
- Insert the plug into the power point and switch on at the power point.

- Slide the ON/OFF switch to either the High “II” or Low “I” speed setting, depending on your preference. The Indicator light in the Heat Selector Button will turn on.



- Set your desired heat setting and then start using the appliance.
- To Turn off, slide the On / Off switch to the Off “O” position.

#### 4.4 Over Temperature Cut Off Safety Switch

If during use, the heater turns off when one of the heat settings has been selected, this is due to the heating element overheating and the safety device activating.

This is usually due to the rear air intake grille being blocked with hair and fluff.

Refer to the “Cleaning” section for instructions on cleaning this grille.

If the over temperature cut off device activates, the air will keep blowing, however the coloured light inside the temperature select button will turn off.

If this happens, you need to switch the appliance off and allow it to cool for approximately 10 minutes.

During this cool down period, unplug the appliance and clean the rear grille, ensure there are no other blockages, then you can plug in and switch it on again.

## 5 Cleaning

Turn off, unplug from power point, and allow to completely cool prior to cleaning.

**Never use** abrasive cleaners, solvents, steel wool, scouring pads, or strong chemicals that might or might not be flammable and/or damaging to the product to clean.

**DO NOT** place the appliance or accessories in a dishwasher.

## 5.1 Main Appliance

**DO NOT** immerse in water, or any other liquid.

Clean the body and power cord by using a damp (not wet) cloth with mild detergent and wipe over the surfaces.

Dry thoroughly with a clean cloth.

**DO NOT** clean the On / Off Switch or the Heat Selector button with a damp cloth.

## 5.2 Rear Grille

The Rear Grille will need cleaning every month of use, or sooner if required.

To remove the grille, whilst holding the appliance body firmly with one hand, with your other hand grasp the Grille “Ring” and rotate it anticlockwise to unlock it then pull away.

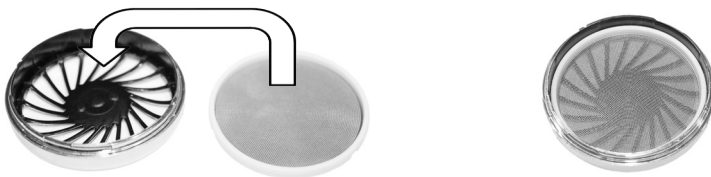


Using the supplied plastic tool (looks like a guitar pick), from the back of the grille and working around the grille, gently push the metal filter out of the Grille Ring.



Using a small brush (old toothbrush) clean away any fluff, dust, and hair on both sides.

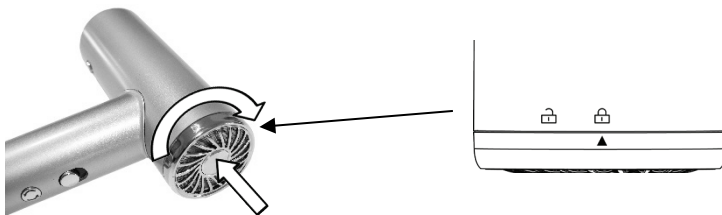
When clean, refit the metal filter back into the grille ring, ensuring the high side of the rubber ring is facing upward as show, then push in all the way.



**NOTE:** It is extremely important that the metal filter is refitted before use.

**DO NOT** use unless the metal filter is fitted and the rear grille is fitted securely to the main appliance.

When clean, replace the rear grille onto the main appliance by aligning the “Arrow” on the top edge of the grille with the “Open Padlock” symbol on the main unit, push in, then rotate the grille clockwise until it locks in place where the “Arrow” aligns with the “Closed Padlock” symbol.



## 5.3 Air Concentrator

The Air Concentrator can be washed in warm water with a mild detergent.

Allow it to completely dry before using again.

## 6 Completion and Storage

After you have finished using the appliance, clean it as described under the Cleaning section then store safely in its box and in a dry place.

**Do Not** wind the power cord around the appliance as this will damage the cord over time. Simply loop the cable and place next to the appliance.

## 7 Troubleshooting

**BEFORE contacting a service agent, check the following points:**

Symptom	Cause	Remedy
No power to the appliance	The Power Plug may not be plugged in to the power point or switched on.	Ensure the power plug is inserted into the power point correctly and switch on.
	There may be no power to the power point	Ensure there is power to the power point. Test with another appliance such as a table lamp.
Power is available but not heating	The Heat Selector Switch may be in the Cool Setting (Blue Light)	Press and release the heat selector button to select the desired heat level.
	The internal thermostat has failed and has activated the thermal Fuse.	The appliance cannot be repaired and must be disposed of.
The Heat turns Off when using with one of the Heat Settings selected and there is no coloured light in the Heat Selector Button.	The heating element is overheating.	<p>Switch the appliance off and allow it to cool for approximately 10 minutes.</p> <p>During this cool down period, unplug the appliance and clean the rear grille and ensure there are no other blockages in the rear or the hot air outlet nozzle of the appliance then you can plug in and switch it on again.</p> <p>Note: the heater will not restart if the On/Off switch has not been moved to the Off position.</p>
A smell is coming from the appliance when used for the first few times.	<p>This is no cause for alarm as it is the heating elements "baking in".</p> <p>You will also have the same when the product has been stored for a while due to the dust baking off.</p>	Nothing to do as this is quite normal.

## 8 Warranty Against Defect

### 12 Month Warranty

Thank you for your purchase.

Your new product is warrantied to be free from defects in materials and workmanship for the period stated above, from the date of purchase, provided that the product is used in accordance with accompanying recommendations or instructions where provided. This warranty is in addition to your rights under the Australian Consumer Law.

For New Zealand customers, this warranty is in addition to statutory rights observed under New Zealand legislation.

We will provide you with your choice of a refund, repair (where possible) or exchange (availability dependent) for this product if it becomes defective within the warranty period. The business will bear the reasonable expense of claiming the warranty.

This warranty will no longer apply where the defect is a result of alteration, accident, misuse, abuse or neglect.

Please retain your receipt as proof of purchase and contact our Customer Service Centre as listed below, for the entity you purchased this product from, for any difficulties with your product. Warranty claims and claims for expense incurred in returning this product can be addressed to the respective Customer Service Centre.

Our goods come with guarantees that cannot be excluded under the Australian Consumer Law. You are entitled to a replacement or refund for a major failure and compensation for any other reasonably foreseeable loss or damage. You are also entitled to have the goods repaired or replaced if the goods fail to be of acceptable quality and the failure does not amount to a major failure.

Contact for Kmart purchases	Contact for Target purchases
Kmart Australia Ltd. C/- Customer Service Centre 690 Springvale Road, Mulgrave Vic 3170 Customer Service: 1800 124 125 (Australia) or 0800 945 995 (New Zealand) or via Customer Help at <a href="http://kmart.com.au">kmart.com.au</a>	Target Australia Pty Ltd C/- Customer Service Centre 2 Kendall Street, Williams Landing, Vic, 3027 Customer Service: 1300 753 567 or via Customer Help at <a href="http://target.com.au/help/contact-us">target.com.au/help/contact-us</a>

