



Air Styler Kit
Y-96
User Manual



PLEASE READ AND SAVE THESE
INSTRUCTIONS FOR FUTURE REFERENCE

IMPORTANT SAFEGUARD

Please read this instruction manual before using your product and keep it in a safe place for future reference. If you pass the appliance on to anyone else, please include this manual.

INTRODUCTION

- Use this appliance on human hair only. Do not use this appliance on artificial hair or animals.
- **IMPORTANT!** The appliance may have different results depending on the hair type. The air styler is not recommended for damaged or bleached hair. Additionally, some hair colour may react differently when heat is applied to hair. Therefore, we recommend to trial at a hidden area of hair before first use.

SAFETY PRECAUTIONS

- Carefully read all instructions before operation and retain for future reference.
- Do not place near the edge of a bench or table during operation.
- Ensure the surface is dry, level, clean and free of liquid and other substances.
- Burn hazard. Keep appliances out of reach from young children, particularly during use and when cooling down.
- Always place the appliance with the stand, if any, on a heat-resistant, stable flat surface.
- **Never leave the appliance unattended when the appliance is connected to the power supply, and when it is in use.** Always ensure the appliance is turned OFF by switching OFF and unplugging the appliance from mains power when not in use, if left unattended and before cleaning and storing.
- Always keep the appliance clean.
- Fully unwind the cord before use.
- To protect against electric shock, do not immerse the power cord, plug or appliance in water or any other liquid.
- Do not allow the cord to hang over the edge of the table or bench, touch hot surfaces or become knotted.
- This appliance is not intended for use by persons (including children) with reduced physical, sensory or mental capabilities, or lack of experience and knowledge, unless they have been given supervision or instruction concerning use of the appliance by a person responsible for their safety.
- **IMPORTANT! Children should be supervised to ensure that they do not play with this appliance.**
- If the supply cord is damaged, DO NOT use. For electrical safety, any repairs to the product must be carried out by qualified electrical person only or the product must be disposed to avoid hazard.
- This product is intended for household use only. Do not use it outdoors or for commercial purposes.
- NEVER grasp the appliance, power cable or power plug with wet hands.
- Always remove the power cable from the socket by pulling on the plug, do not pull on the cable itself. Do not carry or lift the appliance with the power cord.
- Do not fold or crush the power cable. Ensure that the power cable does not run over sharp edges.

- Please do not attempt to dismantle the appliance. This appliance has no user- serviceable parts inside.
- When the appliance is used in a bathroom, disconnect from the mains power after use. Since the proximity of water presents a hazard even when the appliance is switched OFF.
- Do not use outdoors or operate where aerosol (spray) products are being used or where oxygen is being administered.
- For additional protection, the installation of a residual current device (RCD/ Safety switch) having a rated residual operating current not exceeding 30mA is advisable in the electrical circuit supplying the bathroom. If unsure, check with your electrician.

DANGER OF ELECTRIC SHOCK! Do not insert any foreign objects into the appliance.

- Do not use any accessories not supplied with this product.
- The appliance is not intended to be operated by means of an external timer or separate remote-control system.
- Always keep the hair away from the air inlet of the appliance. Hair may be sucked into the air inlet of the appliance causing a blockage.
- Never cover or block the air inlet of the appliance. This may lead to overheating. If the grille becomes blocked, stop using the appliance immediately and clear the blockage.
- For cleaning, please refer to section "CLEANING AND MAINTENANCE".

RISK OF FIRE

- Do not leave the appliance unattended when in use.
- To avoid a build-up of heat, NEVER cover the appliance. Do not use the appliance under a blanket or at other poorly ventilated locations.
- Avoid the addition of heat from other sources, e.g. from direct sunlight, heating appliances, other devices, etc.
- Do not use an extension cable. In the event of danger, the power plug must be quickly and easily accessible.

ELECTRICAL REQUIREMENT

- Check that the voltage on the rating plate of your appliance corresponds with your house electricity supply which must be 220V-240V AC.

IMPORTANT

- The plug removed from the mains lead, if severed, must be destroyed as a plug with bared flexible cord is hazardous if engaged into a live socket.
- If the supply cord is damaged, DO NOT use. Any repairs to the product must be carried out by qualified electrician only or the product must be disposed of.



Danger of suffocation! Keep all packaging material away from children. Dispose of the packaging materials in an appropriate way. Contact your local authorities about collection points or waste separation.



Caution Risk of Burning! The appliance gets very hot!

Take care to avoid contact between the hot surfaces of the unit and the skin, paying particular attention to the face, neck and hands.



WARNING: Do not use this appliance near bathtubs, showers, basins or other vessels containing water.

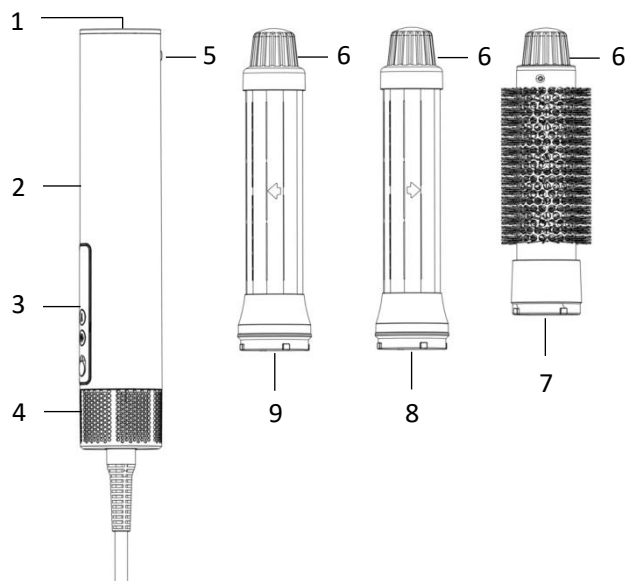


Class II Appliance

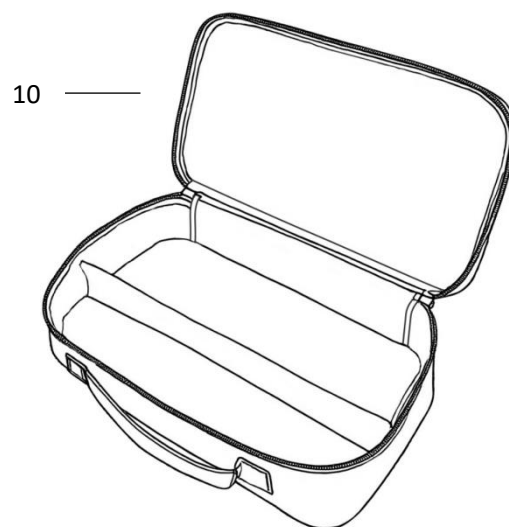
- The hair styler is for household use only.

**SAVE THESE INSTRUCTIONS
FOR FUTURE REFERENCE**

PARTS

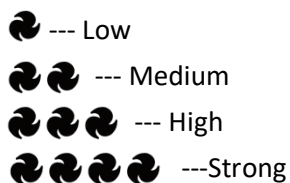


1. Hot air outlet
2. Main unit
3. Control panel with digital display
4. Air inlet grille
5. Attachment release button
6. Cool touch cap
7. Styling brush
8. Left curling iron
9. Right curling iron
10. Storage bag



CONTROL PANEL AND DISPLAY

11. Ionic function indicator
12. Fan speed indicator (4 speed)

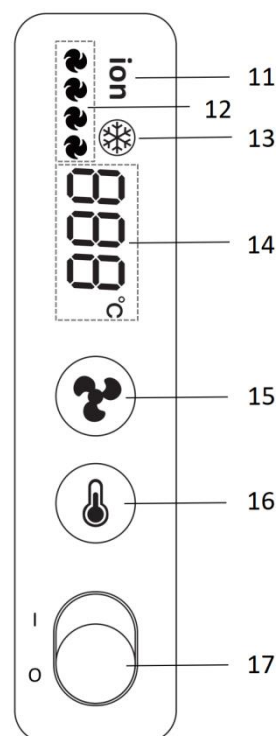


13. Cool setting indicator (25°C)
14. Temperature display
4 temperature settings: 40°C, 60°C, 80°C, 100°C
cool shot: 25°C

15. Fan speed set button

16. Temperature set button
*Press and hold to set alternating hot & cold air blow

17. On/Off switch
Position I --- ON
Position O --- OFF

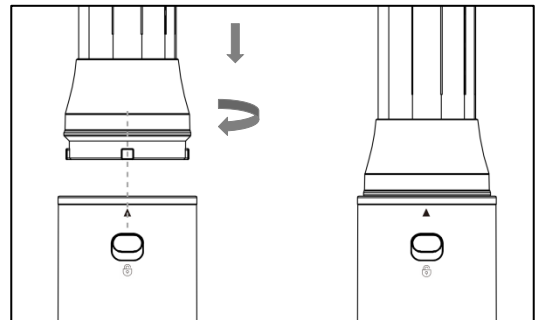


BEFORE FIRST USE

- After unpacking the appliance, check for transport damage and that all the parts mentioned in this manual are present. In the event of damaged or missing parts, return the product back to place of purchase for replacement.
- Do not discard the original box. It can be used for storage and dispatch to avoid transport damage.
- Clean the appliance as described in CLEANING AND MAINTENANCE. For your safety make particular attention to the IMPORTANT SAFEGUARD supplied in the user manual.

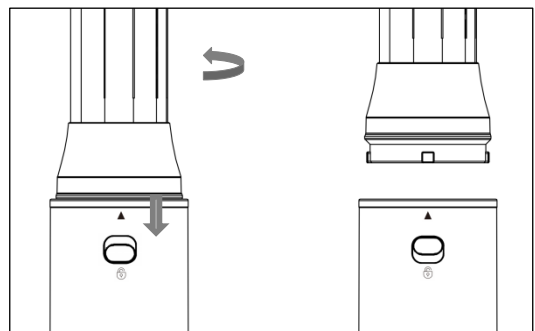
Assemble attachment

- Align the triangle on the main unit with the pins on the attachment.
- Push in the attachment into the main unit and rotate clockwise until you hear a 'click' sound. Ensure the attachment is firmly locked in place.



Detach attachment

- Pull down the attachment release button and rotate the attachment anticlockwise to detach.



CAUTION! Allow the attachment to cool down completely before attempting to remove. The attachments get very hot during and immediately after use. Always handle the attachment by cool touch end when assembling or detaching.

OPERATION

- **WARNING!** DO NOT touch the hot surface.
- **IMPORTANT!** Always place the appliance and attachments on a heat-resistant surface to avoid heat damage to the bench/table surface.

NOTES: Make sure your hair is 80% dry.

Using the appliance

- Fully unwind the power cord, make sure the On/Off switch is in Off (0) position.
- Place the appliance on a smooth, flat, dry surface, plug in and switch on at the mains supply.
- Select the desired attachment:
 - Styling brush (7): To lift hair and give volume, to help achieve curls and waves.
 - Left/Right curling iron (8 & 9): To create fluffy natural curl.

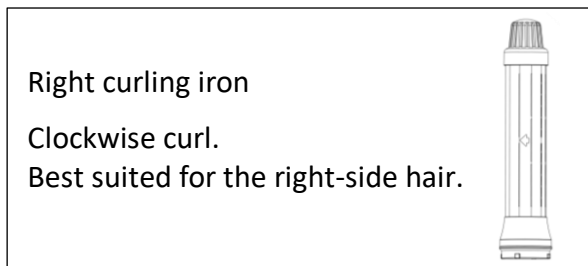
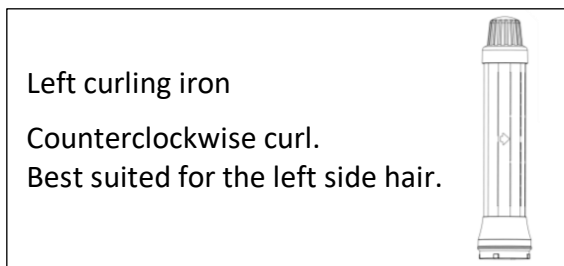
- Press the temperature set button to set the desired temperature.
 - Press the fan speed button to set the desired fan speed.
- TIPS:** The hair styler has a memory function which can remember your previous heat and speed preferences.

Using styling brush

- Place the appliance into the hair, close to the roots.
- Move the brush through the hair towards the ends. When reaching the end of the section, start to rotate the brush inward to make the root lift.
- For even more volume, wind the entire section of the hair around the comb part until you reach the root. Leave the brush in the hair for a few seconds.
- When you have finished styling, switch the appliance OFF, unplug and allow it to cool down before cleaning or storing.

Using curling irons

- Use the appropriate curling iron on the each side of hair.



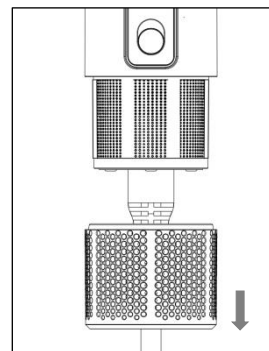
- Divide your hair into upper and lower sections. Grasp a section of hair about 4-5cm wide, ensure the hair hangs loosely and leave the ends free.
- Place the curling iron behind the hair ends, then switch on the appliance. Allow hair automatically to wrap around at the middle of the curling iron.
- When the ends have wrapped around, release the hair section and slowly position the curling iron near the roots, allow the hair to effortlessly wrap around the curling iron, avoid twisting the appliance.
- Hold the curling iron in position for 10 seconds, followed by 10 seconds of COOL air blow.
- Until your hair is dry to ensure the ideal curve, switch off the appliance and gently pull down to unveil the curls.
- Repeat this process to complete your styling.



- When you have finished styling, switch the appliance OFF, unplug and allow it to cool down before cleaning or storing.

Unblock the air inlet grille

- During use, if the air inlet grille becomes clogged or blocked with dust or dirt, clean the grille.
- Disconnect the appliance from mains power. Grasp the air inlet grille and pull it off from the main unit.
- Use lint-free cloth or soft brush to clean the dust and hair on the grille.
- After cleaning, refit the air inlet grille, make sure it sits in place.
- Clean the air inlet grille at least once a month to prevent overheating.



TROUBLE SHOOTING

Erro code	Cause	Solution
E001	The input voltage is too high	Use correct input voltage and restart
E002	The input voltage is too low	Use correct input voltage and restart
E003	The temperature is too high	Cool down the appliance and restart
E004	The motor is locked	Cool down the appliance and restart

CLEANING AND MAINTENANCE

- **Attention!** Switch OFF the appliance and disconnect the supply cord plug from the mains power outlet socket before cleaning.
- **Attention!** Do not use any alcohol, acetone, gasoline, abrasive cleaning agents etc. to clean the appliance and attachments. Do not use hard brushes or metal objects for cleaning.
- Risk of burning! Do not clean the appliance while it is still hot.
- Wipe the appliance with dry cloth.
- Never submerge the appliance in water or let water run over the heating surface of the appliance.
- Clean the air inlet from time to time with a fine brush.

STORAGE

- Store the appliance in a cool, dry location, away from children and pets.
- If the appliance is not used for an extended period, store it preferably in its original packaging.
- After use do not wrap the cord around the appliance as in time this may cause the cord to fracture and fail. Coil cord loosely by the side of the appliance during storage.

DISPOSAL

Do not dispose of this product with normal household waste collection. If unsure, contact the local council waste management service for proper disposal facilities available for your area.

TECHNICAL DATA

Voltage: 220-240V

Frequency: 50-60Hz

Power: 1250-1500W

12 Month Warranty

Thank you for your purchase.

Your new product is warranted to be free from defects in materials and workmanship for the period stated above, from the date of purchase, provided that the product is used in accordance with accompanying recommendations or instructions where provided. This warranty is in addition to your rights under the Australian Consumer Law.

For New Zealand customers, this warranty is in addition to statutory rights observed under New Zealand legislation.

We will provide you with your choice of a refund, repair (where possible) or exchange (availability dependent) for this product if it becomes defective within the warranty period. The business will bear the reasonable expense of claiming the warranty.

This warranty will no longer apply where the defect is a result of alteration, accident, misuse, abuse or neglect.

Please retain your receipt as proof of purchase and contact our Customer Service Centre as listed below, for the entity you purchased this product from, for any difficulties with your product. Warranty claims and claims for expense incurred in returning this product can be addressed to the respective Customer Service Centre.

Our goods come with guarantees that cannot be excluded under the Australian Consumer Law. You are entitled to a replacement or refund for a major failure and compensation for any other reasonably foreseeable loss or damage. You are also entitled to have the goods repaired or replaced if the goods fail to be of acceptable quality and the failure does not amount to a major failure.

Contact for Kmart purchases	Contact for Target purchases
Kmart Australia Ltd. C/- Customer Service Centre 690 Springvale Road, Mulgrave Vic 3170 Customer Service: 1800 124 125 (Australia) or 0800 945 995 (New Zealand) or via Customer Help at kmart.com.au	Target Australia Pty Ltd C/- Customer Service Centre 2 Kendall Street, Williams Landing, Vic, 3027 Customer Service: 1300 753 567 or via Customer Help at target.com.au/help/contact-us