

anko

Highchair Booster Seat Instruction Manual

10-36
months

15
kg
MAXIMUM
WEIGHT OF
CHILD



The photos and illustrations shown in this instruction manual are generic.
The manufacturer reserves the right to change any specification or feature without prior notice.

IMPORTANT: KEEP FOR FUTURE REFERENCE. READ CAREFULLY.

IMPORTANT! KEEP FOR FUTURE REFERENCE

Please read all the instructions carefully before use of the product and keep it for future reference. Ensure the product is assembled correctly to ensure safe use.

Adult assembly requirements

Caution! To ensure your child's safety, this product must be assembled by an adult. Do not use it until it has been fully and correctly assembled.

Diagram

- | | | |
|----------------------------|-----------------------------------|---|
| ① Booster seat | ⑥ Storage guide for bottom straps | ⑪ Removable feeding tray |
| ② Fold-out feet | ⑦ Back support bar | ⑫ Lock for foldable backrest and back support bar |
| ③ Bottom attachment straps | ⑧ Foldable backrest | |
| ④ Back attachment straps | ⑨ Removable activity panel | ⑬ Swivel knobs to secure the legs |
| ⑤ 3-point safety harness | ⑩ Battery compartment | ⑭ Anti-slip pads |

⚠ WARNING

Children have suffered **head injuries**, including skull fractures, **after falling** with or from booster seats.

➤ Prevent serious injury or death: Do NOT use in motor vehicles.

➤ **Never** use on a seat that does NOT have a backrest. Do NOT use the product on a pedestal chair, swivel chair, rocking chair, stool, bench or any other non-adult four-legged chair.

➤ Always check the security and the stability of the booster seat on the adult chair before use.

➤ The feeding tray is not designed to hold the child in the chair.

➤ Check that booster seat is **securely attached** to adult chair before each use.

➤ **Always use restraints** until child is able to get in and out of booster seat without help. Ensure the restraint system is correctly fitted before use. Adjust to fit **snugly**.

➤ **Never allow child to push away from table.**

➤ **Never lift and carry** child in booster seat.

➤ **Stay near and watch** your child during use. Never leave the child unattended and without supervision.

➤ Always secure to the adult chair using the bottom and back attachment straps.

➤ Do not use on an adult chair unless the seat bottom is at least 38cm wide and 38cm deep, and the backrest is at least 40cm high.

WARNING: Use this product only for a child who is capable of sitting upright unassisted.

2

WARNING!

➤ Never leave child unattended and without supervision.

➤ Always use the restraint system and ensure it is correctly fitted.

➤ Always use the chair attachment system and ensure it is correctly fitted before use.

➤ Always check the security and the stability of the booster seat on the adult chair before use.

➤ Do not use this booster seat on stools or benches.

IMPORTANT:

➤ Read all instructions and labels before using the booster seat.

➤ Prevent serious injury or death from sliding out, falls or tipping over, by following all instructions carefully.

➤ Before assembly and each use, inspect this product for damaged hardware, loose joints or missing parts. DO NOT use if any part is broken, torn or missing.

➤ This booster seat is designed for use with adult size chairs that have a flat smooth seat and back surfaces only.

➤ This product is to be used **ONLY** as a booster seat. It is not intended for use as a bathing seat, step stool, car seat, or for any other purpose.

➤ Ensure that the adult chair with the chair mounted seat is placed in a position where the child is unable to use its feet to push against any other structure as this can cause the tip over of the adult chair supporting the chair mounted seat.

➤ Check the surface and stability of the floor and the chair before fitting the booster seat.

➤ **NEVER** use the booster seat on a table top, swivel chair, or any other chairs where the straps cannot secure it properly.

➤ This product is intended for children able to sit up unaided (10 months and up to 36 months of age) or a maximum weight of 15kg.

➤ Do not use accessories or replacement parts other than those approved by the manufacturer.

➤ To avoid injuries caused by falls or by access to dangerous items, position product away from solid structures, benches, furniture, walls, and electrical cords.

➤ Prevent serious injury or death. Do not use this product in motor vehicles.

BATTERY INSTRUCTIONS:

Battery installation

➤ Ensure the activity panel is switched OFF (if applicable).

➤ Use a screwdriver (not included) to open the battery cover located at back/bottom of the activity panel.

➤ Install the required batteries according to the diagram inside the battery compartment. Alkaline batteries are recommended.

➤ Replace and secure the battery cover.

➤ Batteries must be installed and replaced by an adult.

Battery notice

➤ If the activity panel stops working or malfunctions, it's time for an adult to change the batteries.

➤ Non-rechargeable batteries are not to be recharged.

➤ Rechargeable batteries are only to be charged under adult supervision.

➤ Rechargeable batteries are to be removed from the activity panel before being charged (if removable).

➤ Do not mix old and new batteries (if applicable).

➤ Do not mix alkaline, standard (carbon zinc) or rechargeable batteries (if applicable).

➤ Different types of batteries or new and used batteries are not to be mixed (if applicable).

➤ Batteries are to be inserted with the correct polarity (+ and -).

➤ Exhausted batteries are to be removed from the activity panel.

➤ The supply terminals are not to be short-circuited.

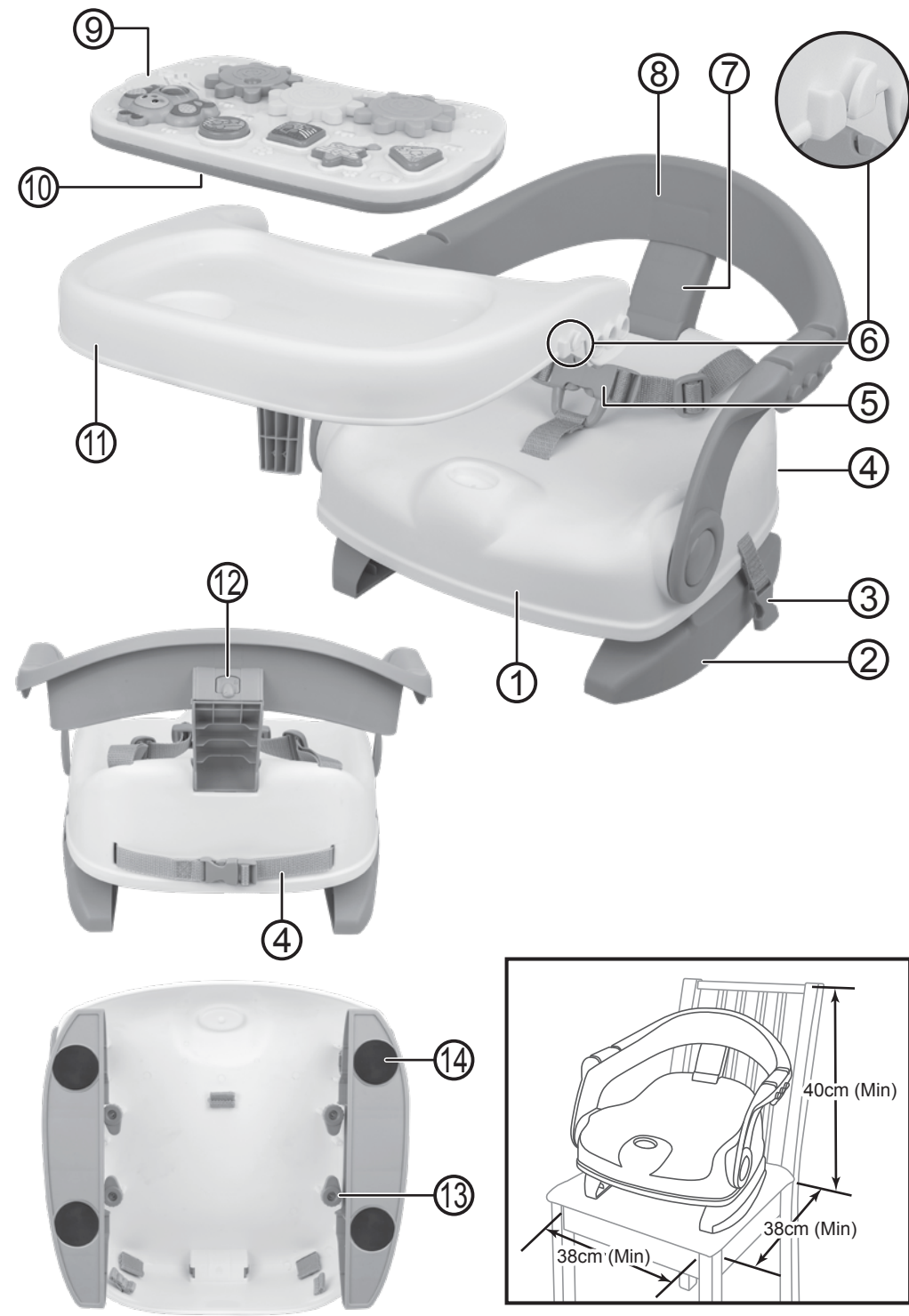
This sheet contains important information.

Please keep this instruction manual for future reference.



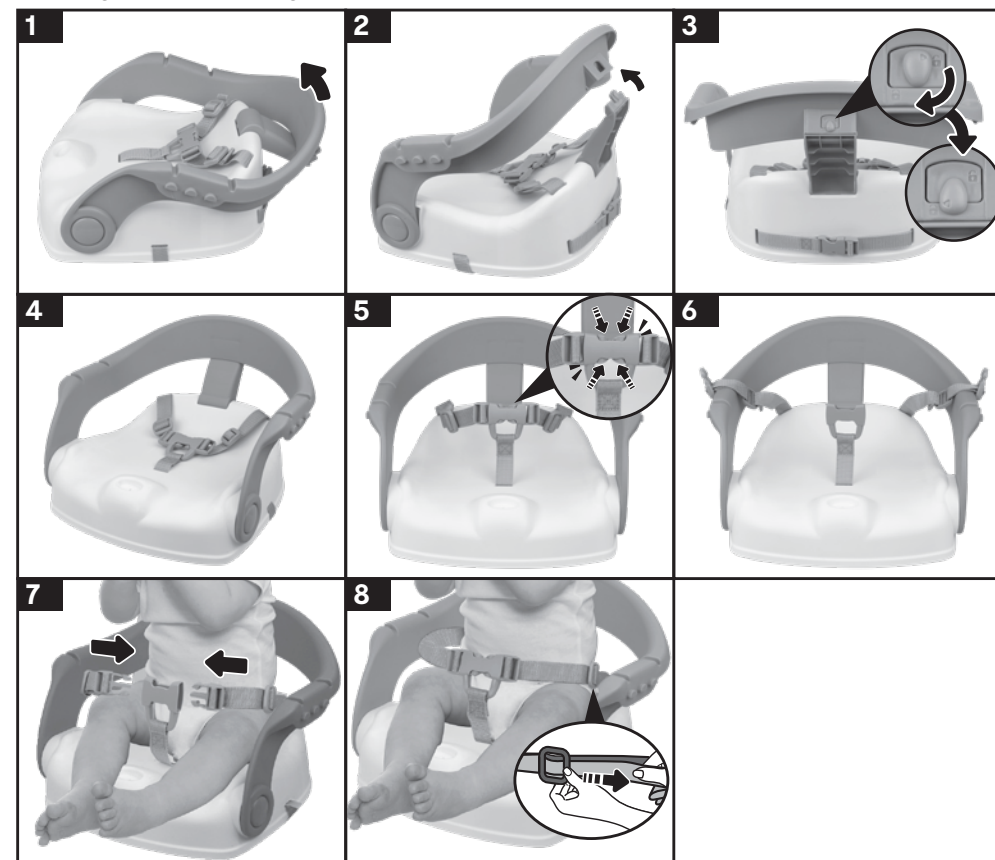
This symbol indicates that the product is not to be disposed of in household waste and should be collected separately. Contact local authority for recycling & collection information.

3



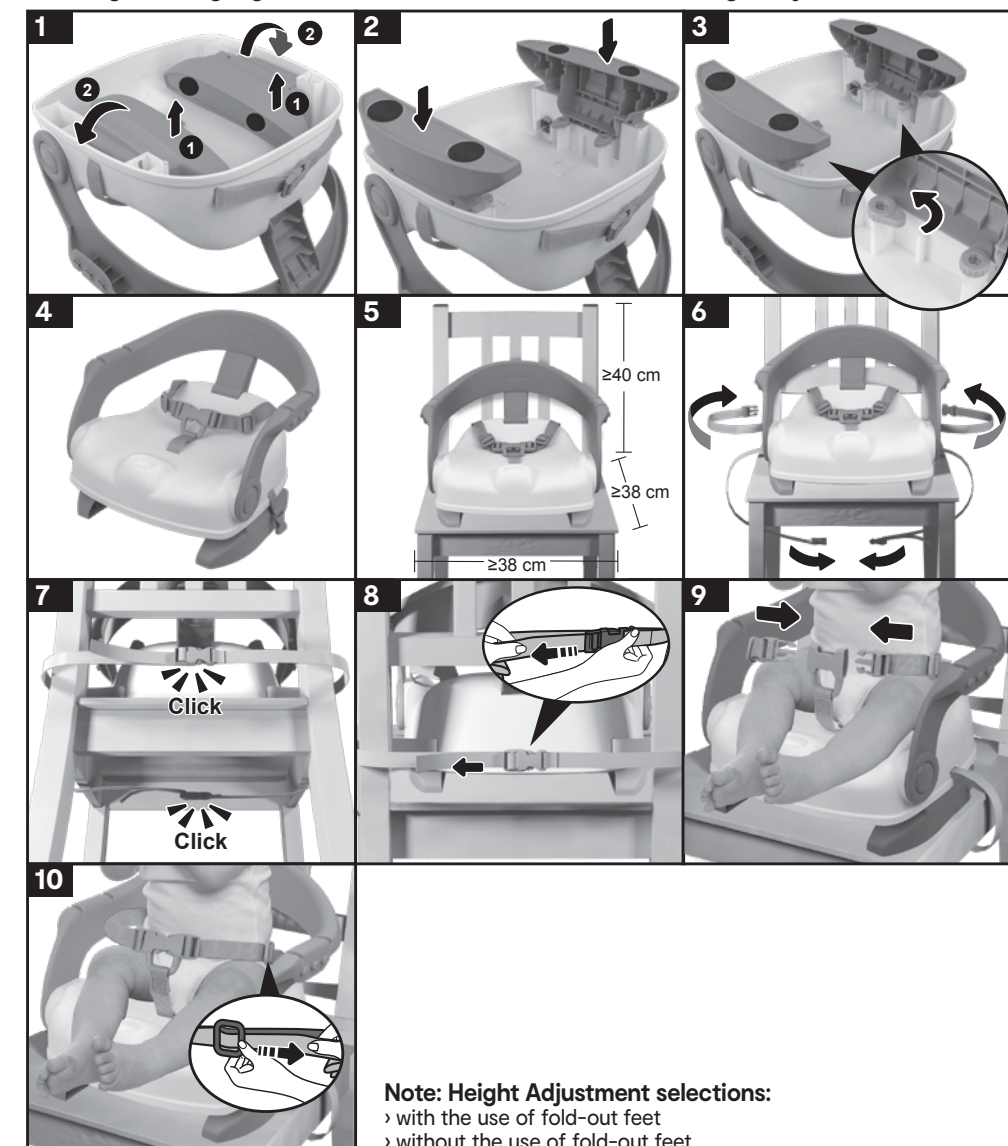
4

Assembly - Basic assembly and child restraints



5

Assembly - Placing Highchair Booster Seat on adult chair and height adjustment selection



Note: Height Adjustment selections:

- with the use of fold-out feet
- without the use of fold-out feet

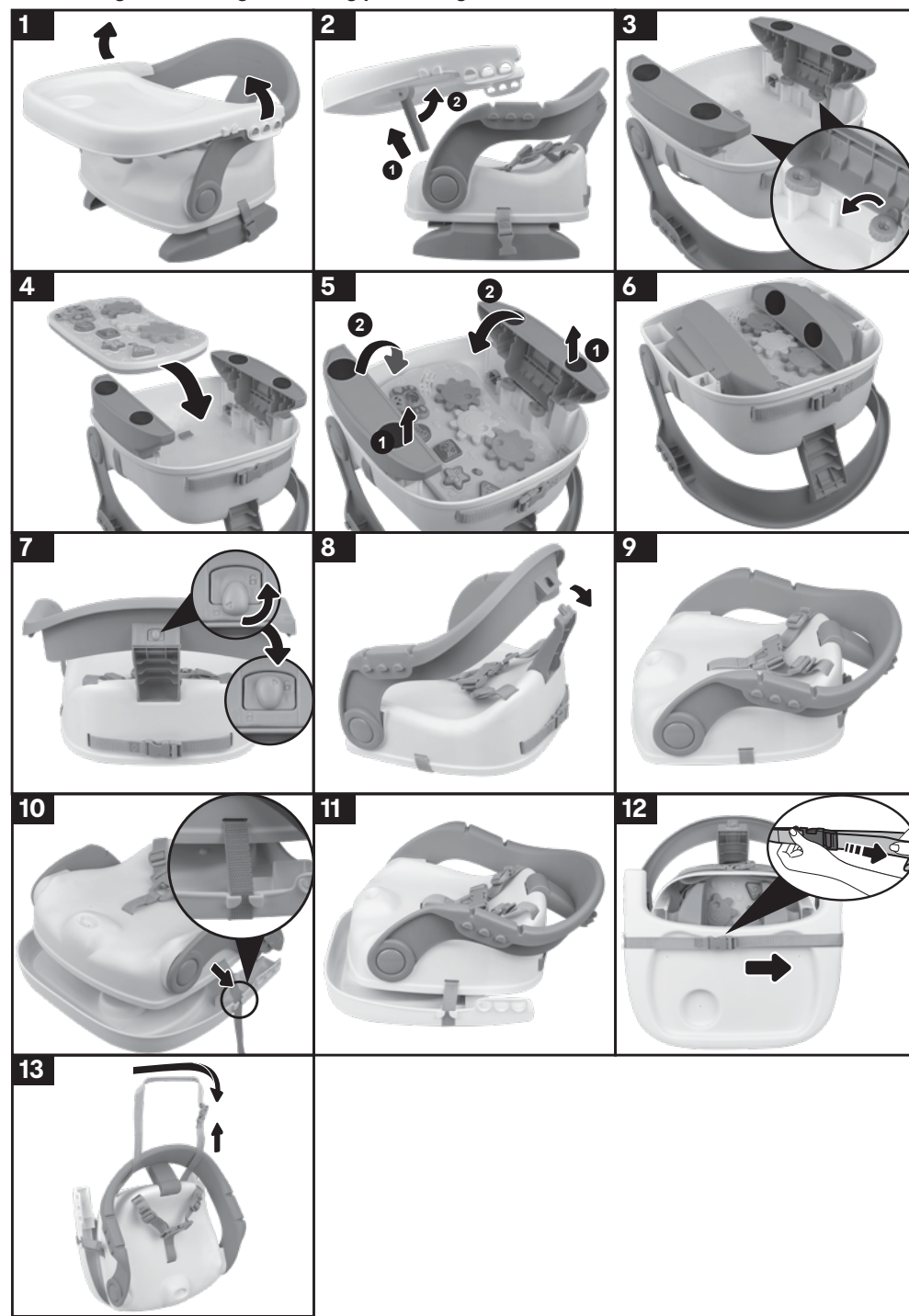
6

Assembly - Installation of feeding tray



7

Disassembly - For storage and easy portability



8



CARE AND MAINTENANCE:

➤ Highchair Booster Seat with attached straps. Wipe clean with a damp cloth and mild cleaning agent if needed. Rinse clean with water to remove any residue. Do not use bleach. Do not use harsh or abrasive cleaners.

➤ Feeding Tray: Top rack dishwasher safe (or use the bottom rack - without using the heated drying cycle).

➤ Activity Panel: Surface clean only with a slightly damp cloth. Do not immerse in water. Damage may result.

➤ Note: The Activity Panel is not intended to be used in contact with food or drink.

9

K: 43-605-903 T: 71-491-356

MADE IN CHINA

RETAILER INFORMATION IF SOLD BY:

KMART AU: 690 SPRINGVALE RD, MULGRAVE VIC 3170 AUSTRALIA.

KMART NZ: REGIONAL OFFICE C/O KMART PAPATOETOE STORE, HUNTERS PLAZA, GREAT SOUTH ROAD, PAPATOETOE, AUCKLAND, NEW ZEALAND.

TARGET AU: 2 KENDALL ST, WILLIAMS LANDING VIC 3027 AUSTRALIA.