

File Name: 0301-720005-NL-KM03-001	Artwork Prepare By : Pong	Date: 30-06-2025 (d/m/y)
Size: 148 X 210 ( L X H mm )	Instruction Manual : WF std <input type="checkbox"/>	Client version <input checked="" type="checkbox"/>
Customer: KM03	Color: <b>K</b>	

anko

## 3-in-1 Cot Mobile Instruction Manual



The photos and illustrations shown in this instruction manual are generic.  
The manufacturer reserves the right to change any specification or feature without prior notice.

**IMPORTANT: KEEP FOR FUTURE REFERENCE. READ CAREFULLY.**

- › This product may not attach to all cot designs.
- › Do not add additional strings or straps to attach to a cot or playpen. Only use the attachment provided. Ensure attachment is tightly secured according to the instructions. Check frequently.
- › To ensure your child's safety, please follow the instructions carefully and ensure the final assembly is correct. Check frequently.
- › Please check the unit frequently to ensure it is still secure.
- › When converting the product to Projector or Night light mode, it can only be used outside the cot.
- › Product must be used under adult supervision.
- › Ensure that the internal light is positioned upright when in Projector mode to enable projection directly onto the ceiling.

### Care and cleaning

- › Cot Mobile unit: Wipe clean with a slightly damp cloth and dry with a soft cloth. Do not immerse in water. Damage may result.
- › Baby-safe mirror: Do not bend or fold it. Surface clean only with a damp cloth. Air dry.
- › Plush toys: Surface clean only. Wipe with a clean damp cloth. Air dry.

### BATTERY INSTRUCTIONS


#### Battery installation

- › REQUIRES 3 X 1.5V AA BATTERIES. (NOT INCLUDED).
- › Ensure the product is switched OFF (if applicable).
- › Use a screwdriver (not included) to open the battery cover located at the bottom of the Night light.
- › Install the required batteries according to the diagram inside the battery compartment. Alkaline batteries are recommended.
- › Replace and secure the battery cover.
- › Batteries must be installed and replaced by an adult.

#### Battery notice

- › If the program/electronic activity stops working or malfunctions, the product may require new batteries.
- › Non-rechargeable batteries are not to be recharged.
- › Rechargeable batteries are only to be charged under adult supervision.
- › Rechargeable batteries are to be removed from the product before being charged (if removable).
- › Do not mix old and new batteries (if applicable).
- › Do not mix alkaline, standard (carbon zinc) or rechargeable batteries (if applicable).
- › Different types of batteries or new and used batteries are not to be mixed (if applicable).
- › Batteries are to be inserted with the correct polarity (+ and -).
- › Exhausted batteries are to be removed from the product.
- › The supply terminals are not to be short-circuited.

This sheet contains important information.  
Please keep all information for future reference.

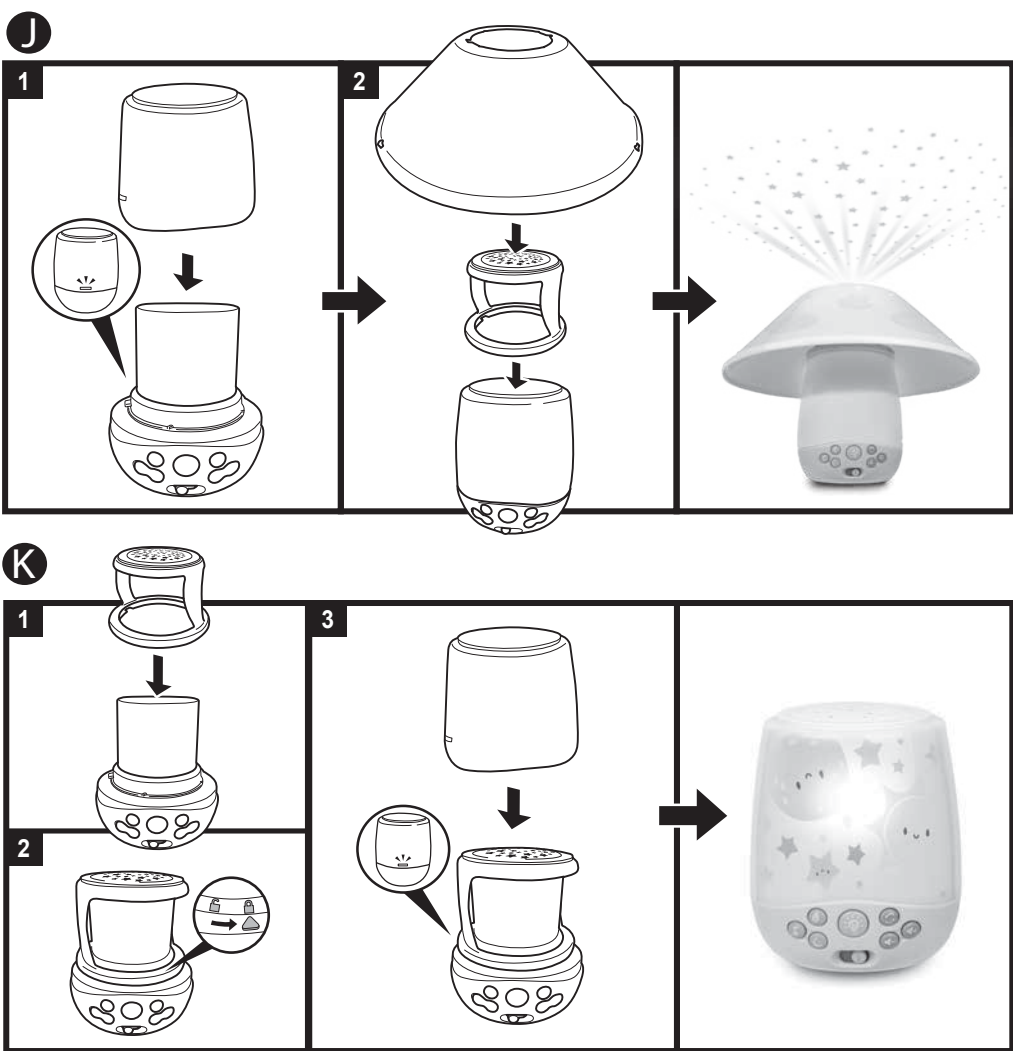
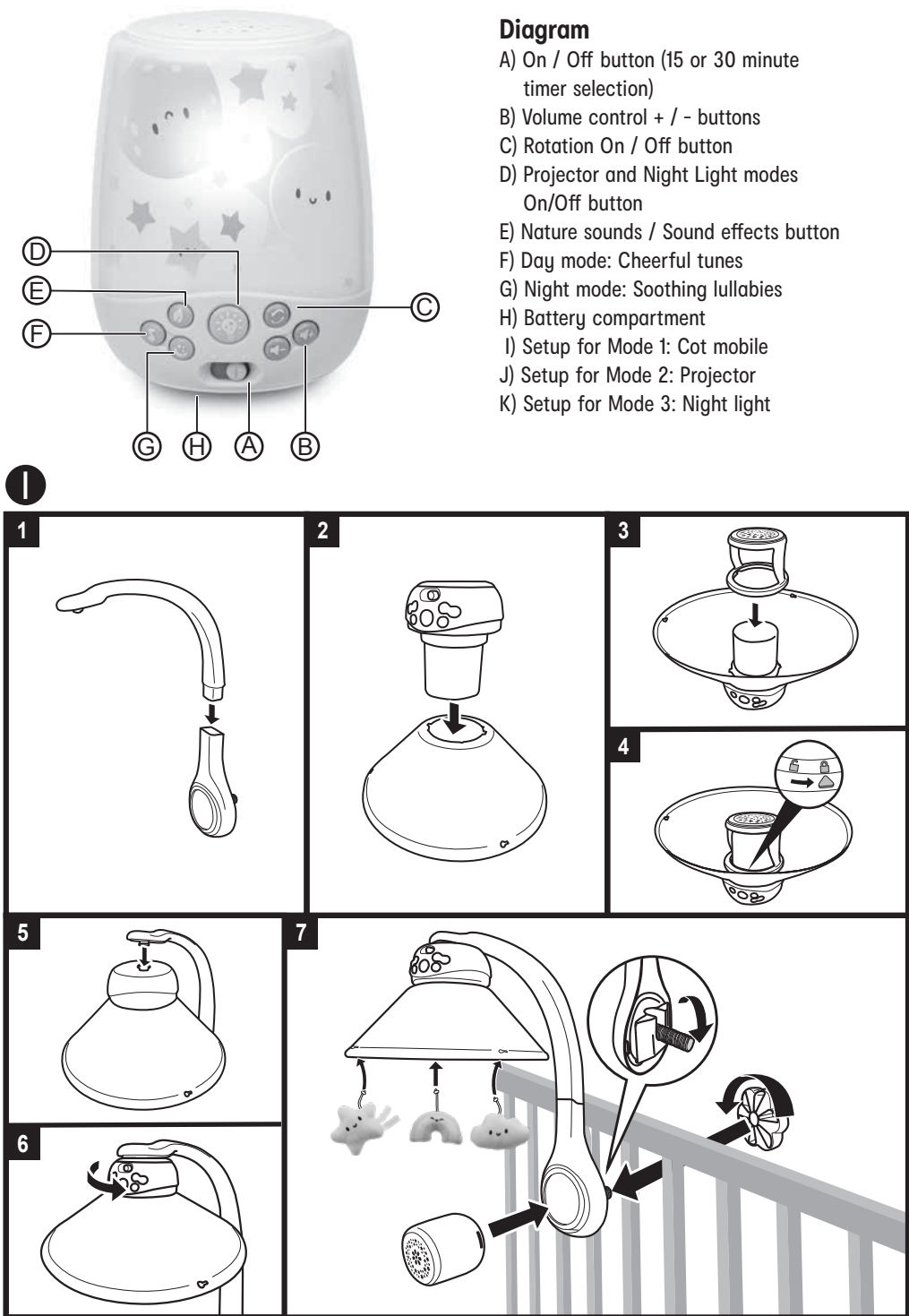
 This symbol indicates that the product is not to be disposed of in household waste and should be collected separately. Contact local authority for recycling & collection information.

K: 43-605-897 | T: 71-491-349

MADE IN CHINA

CUSTOMER SERVICE:

KMART AU: 1800 124 125 | KMART NZ: 0800 945 995 | TARGET AU: 1300 753 567



REQUIRES 3 X 1.5V AA BATTERIES. (NOT INCLUDED).

Adult assembly required.

Caution! To ensure your child's safety, this product must be assembled by an adult.

### WARNING!

Possible chance of injury due to entanglement. Keep mobile out of baby's reach. Remove mobile from cot when baby begins to push up on hands and knees.

### Important!

- › Suitable from birth to 5 months when mounted on a sturdy cot rail or playpen (cot mobile mode).
- › This product is not a toy. Do not allow children to play with it. For adult use only. Adult supervision required.
- › A cot mobile is intended for visual stimulation only and is not intended to be grasped by the child.
- › Do not mount the mobile directly over the baby.
- › Do not mount the mobile on a soft sided playpen, and preferably not on any cot sides that can be raised or lowered. If you are attaching this product to a cot side rail that can be raised and lowered, ensure the cot side rail is in the raised and locked position whenever the child is in the cot.