

Assembly Instructions for Spider-Man Storage Bench

Keycode no.: 43594849

Ax10		Ix2	
Bx10		Jx2	
Cx2		Kx4	
Dx3		Lx4	
Ex18		Mx1	
Fx8		Nx1	
Gx8		Ox1	
Hx4		Px2	

1



CAUTION:

ADULT ASSEMBLY IS REQUIRED. UNASSEMBLED PARTS CONTAIN SCREWS WITH FUNCTIONAL SHARP POINTS. PLEASE KEEP UNASSEMBLED PARTS AWAY FROM SMALL CHILDREN. ADULT SUPERVISION IS RECOMMENDED. STOP USING THE PRODUCT IF THE LID SUPPORT DOES NOT KEEP THE LID OPEN IN EVERY POSITION.

WARNING:

DO NOT STAND ON THE PRODUCT. DO NOT USE THE PRODUCT AS A STEP LADDER. DO NOT USE THE PRODUCT UNLESS ALL BOLTS, SCREWS AND KNOBS ARE FIRMLY SECURED. CHECK AND TIGHTEN ALL PARTS REGULARLY. MAXIMUM SAFE LOAD LIMIT FOR INTERNAL BOTTOM BOARD: 25KG. SEATING SUITABLE USE FOR 2 KIDS ONLY. SEATING MAXIMUM LOAD LIMIT: 100KG, 50KG/SEAT. FAILURE TO FOLLOW THESE WARNINGS COULD RESULT IN SERIOUS INJURY.

WARNING:

PLEASE SECURE THIS PRODUCT WITH THE SUPPLIED WALL FIXING. IT IS STRONGLY RECOMMENDED THAT THIS PRODUCT IS PERMANENTLY FIXED TO THE WALL. REGULARLY CHECK THE ANCHOR IS SECURELY FASTENED.



WARNING:

CHOKING HAZARD - SMALL PARTS. NOT SUITABLE FOR CHILDREN UNDER 3 YEARS.

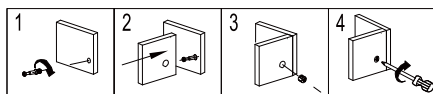
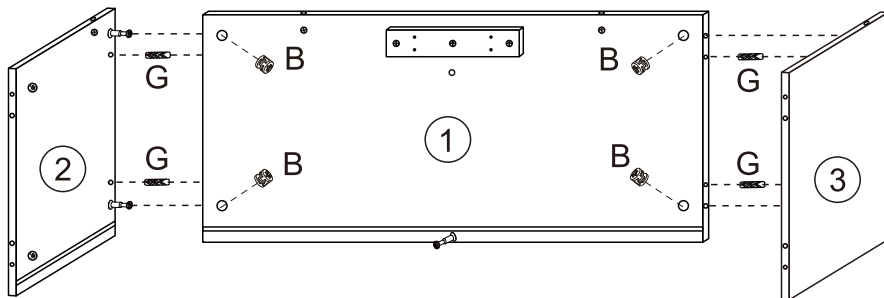
WARNING:

PLEASE CHECK CONDITION OF PRODUCT REGULARLY, AS SCREWS MAY LOOSEN WITH USE OVER TIME. TIGHTEN SCREW FITTINGS IF NECESSARY. DISCONTINUE USE OF THE ITEM IF EXCESSIVE WEAR AND TEAR IS FOUND.

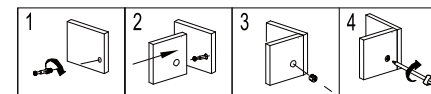
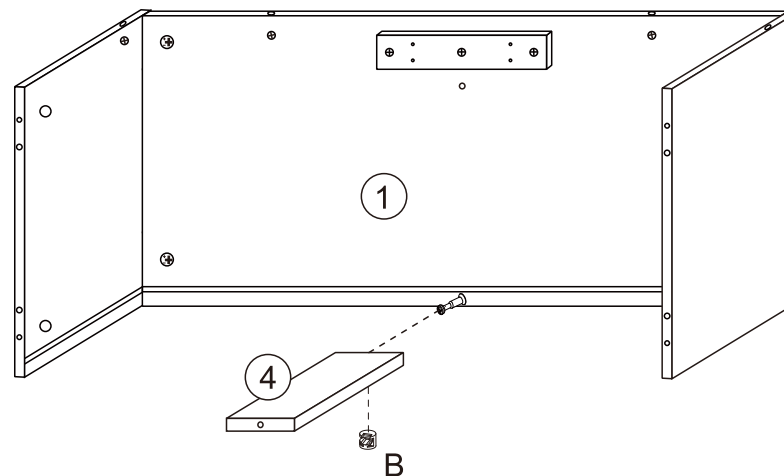
CAUTION:

FOR YOUR SAFETY WHEN ATTACHING THE ANCHOR FIXINGS, PLEASE CHECK ANY ELECTRICAL WIRES OR PLUMBING INSIDE THE WALL BEFORE DRILLING ANY HOLES. IF UNSURE, CONSULT AN EXPERT.

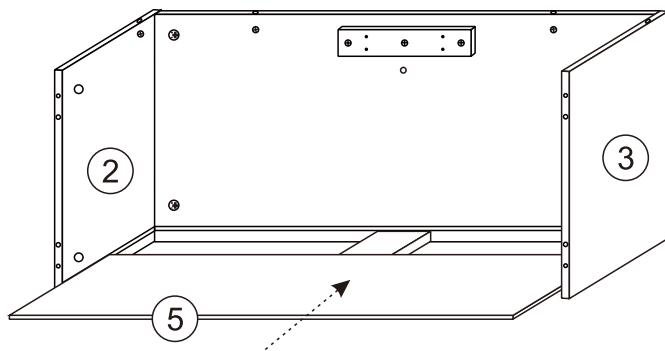
2



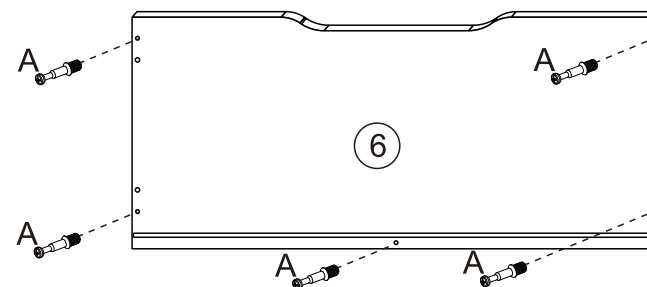
3



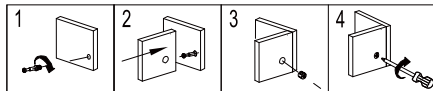
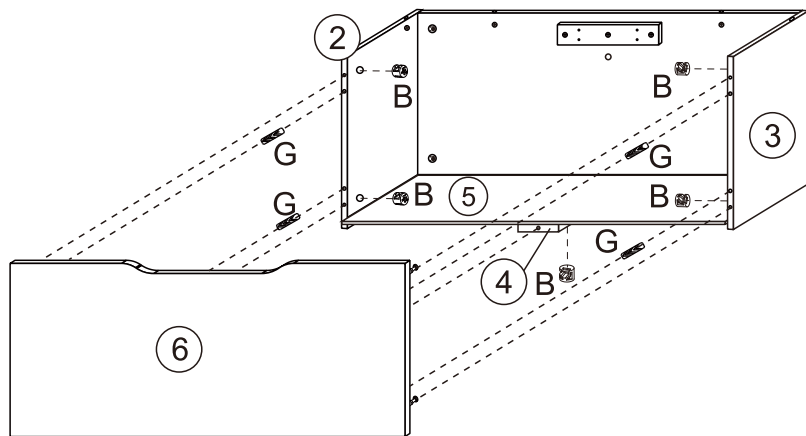
4



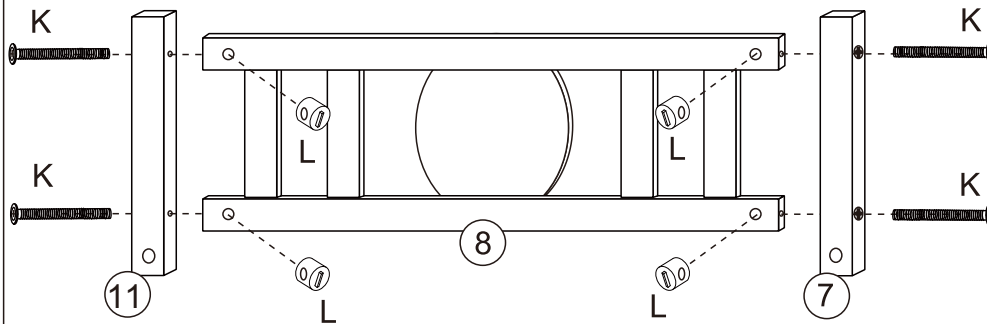
5



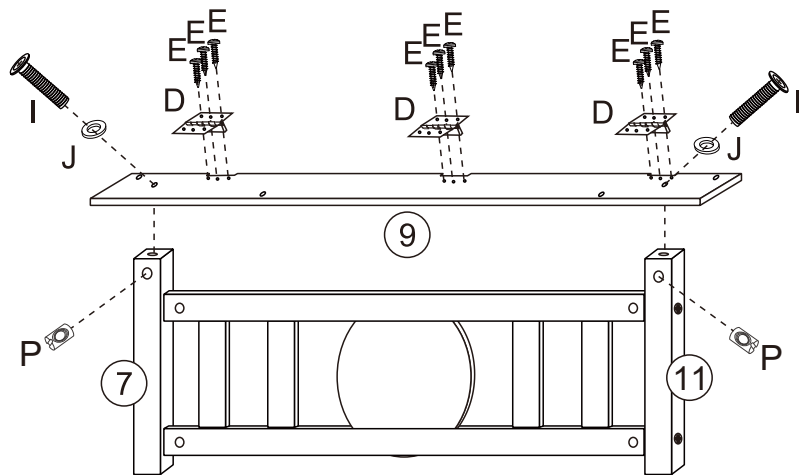
6



7



8



9

