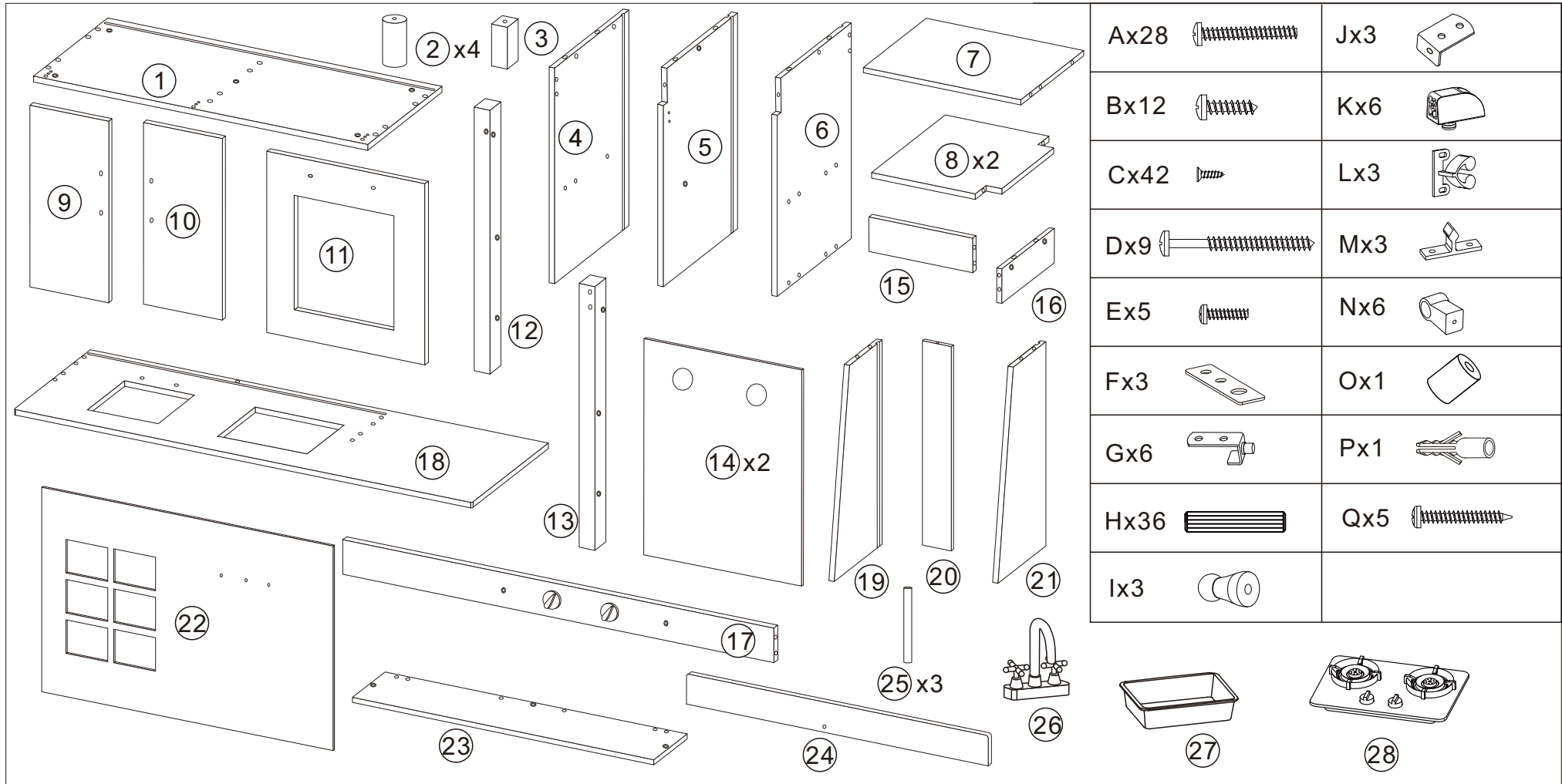


# Assembly Instructions for Deluxe Kitchen

K: 43585151 | T: 71455136



Ax28		Jx3	
Bx12		Kx6	
Cx42		Lx3	
Dx9		Mx3	
Ex5		Nx6	
Fx3		Ox1	
Gx6		Px1	
Hx36		Qx5	
Ix3			



## CAUTION:

ADULT ASSEMBLY IS REQUIRED. HARDWARE CONTAINS SCREWS WITH FUNCTIONAL SHARP POINTS. KEEP UNASSEMBLED PARTS OUT OF REACH OF SMALL CHILDREN.

**WARNING:** THE INSTRUCTION MANUAL HAS TO BE KEPT SINCE IT CONTAINS IMPORTANT INFORMATION.

**CAUTION:** PLEASE CHECK CONDITION OF PRODUCT REGULARLY, AS SCREWS MAY LOOSEN WITH USE OVER TIME. TIGHTEN SCREW FITTINGS IF NECESSARY. DISCONTINUE USE OF THE ITEM IF EXCESSIVE WEAR AND TEAR IS FOUND.

**WARNING:** DISPOSE OF USED BATTERIES IMMEDIATELY. KEEP NEW AND USED BATTERIES AWAY FROM CHILDREN. IF YOU THINK BATTERIES MIGHT HAVE BEEN SWALLOWED OR PLACED INSIDE ANY PART OF THE BODY, SEEK IMMEDIATE MEDICAL ATTENTION.

**WARNING:** BATTERIES ARE TO BE INSERTED WITH THE CORRECT POLARITY (+ and -). DO NOT MIX DIFFERENT TYPES OF BATTERIES OR NEW AND USED BATTERIES. NON-RECHARGEABLE BATTERIES ARE NOT TO BE RECHARGED. RECHARGEABLE BATTERIES SHOULD ONLY BE CHARGED BY AN ADULT. RECHARGEABLE BATTERIES ARE TO BE REMOVED FROM THE TOY BEFORE BEING CHARGED. THE SUPPLY TERMINALS ARE NOT TO BE SHORT-CIRCUITED. REMOVE BATTERIES FROM THE TOY WHEN NOT IN USE FOR EXTENDED TIME OR WHEN BATTERIES BECOME EXHAUSTED. BATTERY INSTALLATION BY AN ADULT IS REQUIRED. DISPOSE OF BATTERIES RESPONSIBLY. DO NOT DISPOSE OF IN FIRE.

**WARNING:** TOY CONTAINS BATTERIES OF A SIZE WHICH ARE SMALL PARTS WHICH PRESENT A CHOKING OR INGESTION HAZARD. ALWAYS ENSURE BATTERY COMPARTMENT IS PROPERLY SECURE. BATTERY PLACEMENT BY ADULT ONLY. KEEP LOOSE BATTERIES OUT OF REACH OF CHILDREN DURING EXCHANGE PROCESS.



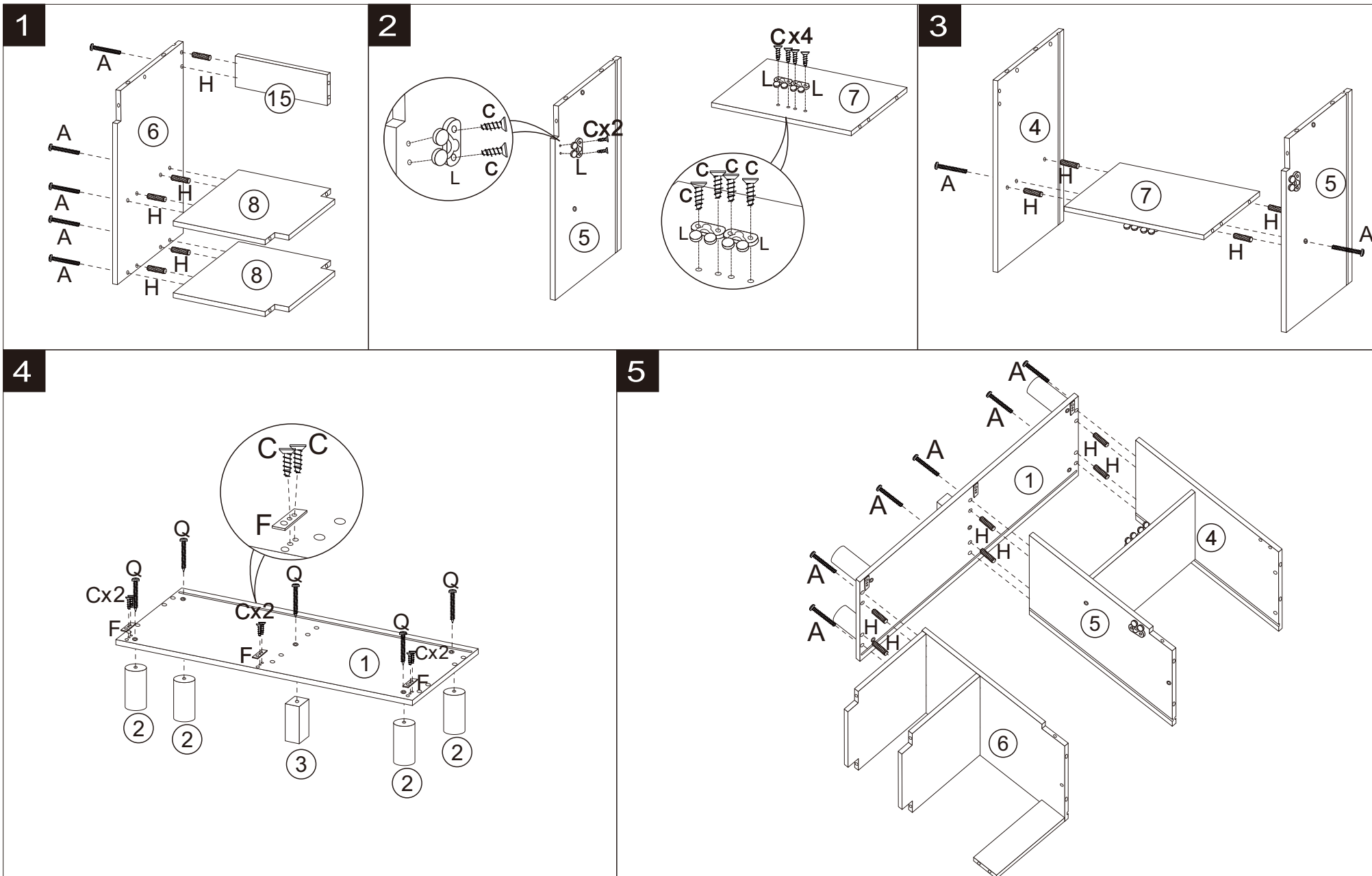
## WARNING

CHOKING HAZARD-SMALL PARTS.  
NOT SUITABLE FOR CHILDREN UNDER 3 YEARS.

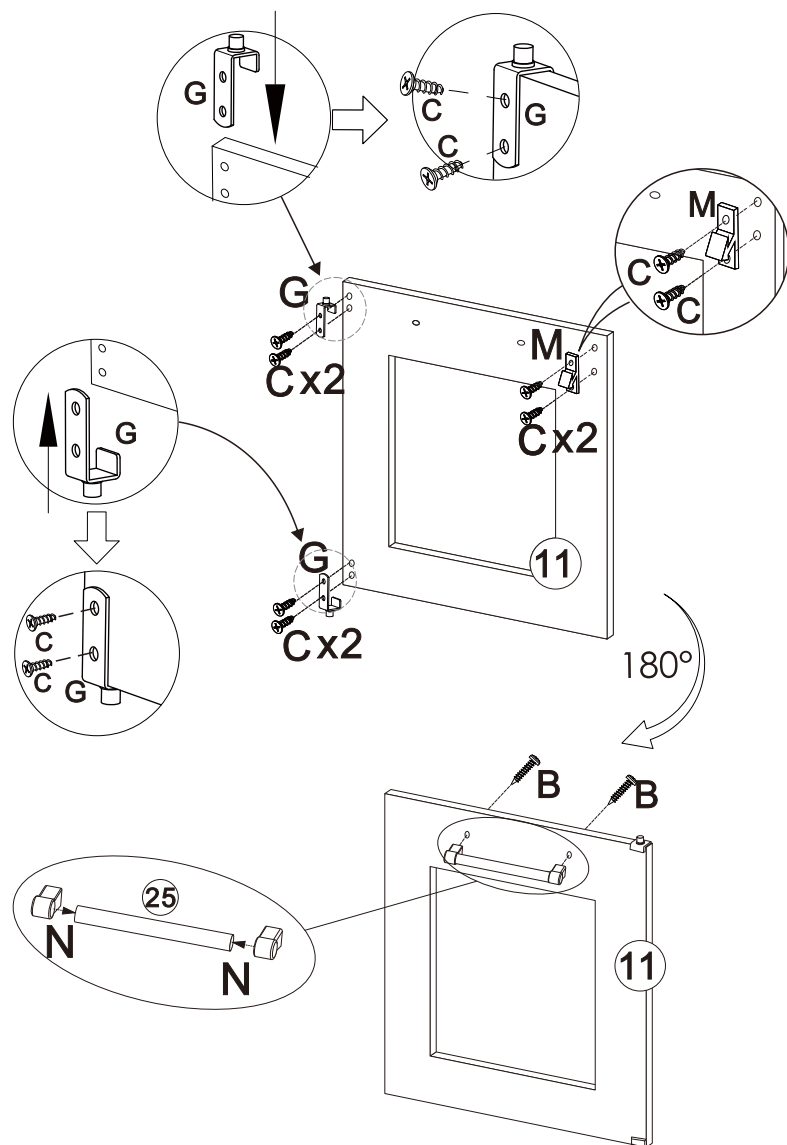
THIS IS A TOY, INTENDED  
FOR ROLE PLAY ONLY.

**WARNING:** PLEASE SECURE THIS PRODUCT WITH THE SUPPLIED WALL FIXING. IT IS STRONGLY RECOMMENDED THAT THIS PRODUCT IS PERMANENTLY FIXED TO THE WALL. PLEASE SEEK PROFESSIONAL ADVICE IF YOU ARE IN DOUBT OF WHAT FIXING DEVICE TO USE. REGULARLY CHECK THE ANCHOR IS SECURELY FASTENED.

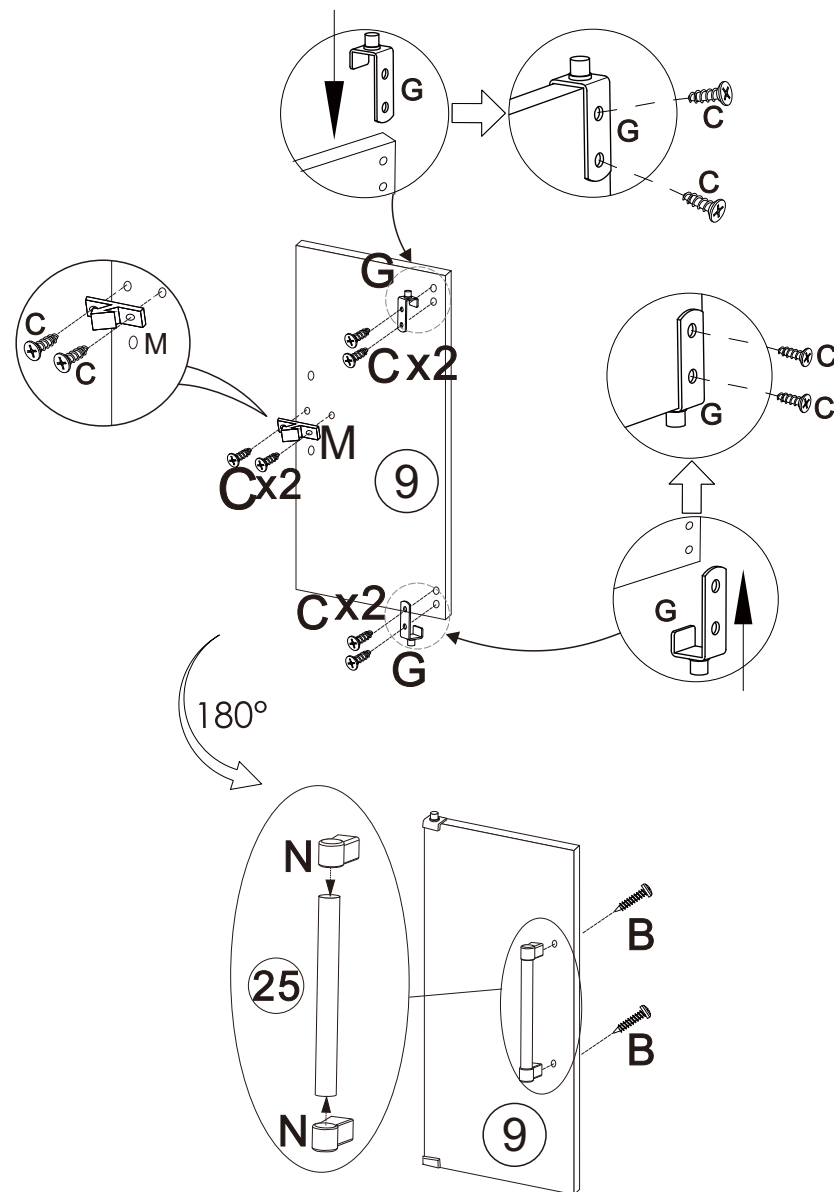
**CAUTION:** FOR YOUR SAFETY WHEN ATTACHING THE ANCHOR FIXINGS, PLEASE CHECK ANY ELECTRICAL WIRES OR PLUMBING INSIDE THE WALL BEFORE DRILLING ANY HOLES. IF UNSURE, CONSULT AN EXPERT.



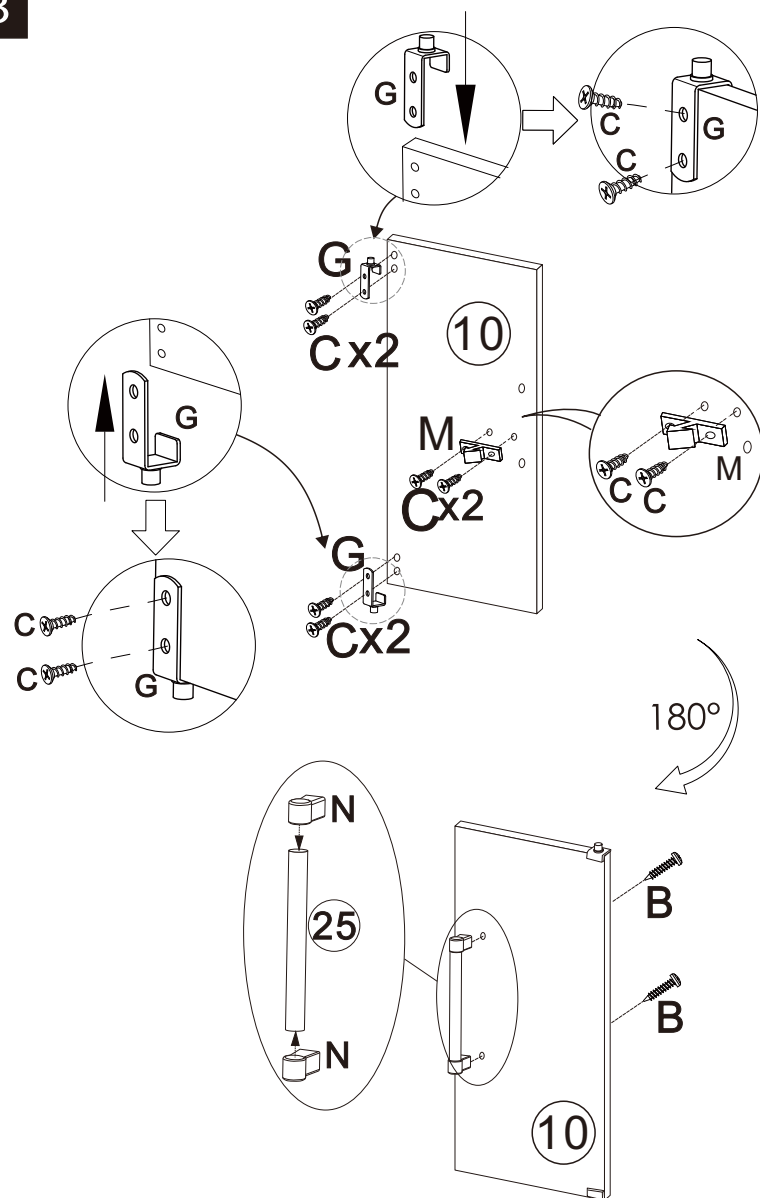
6



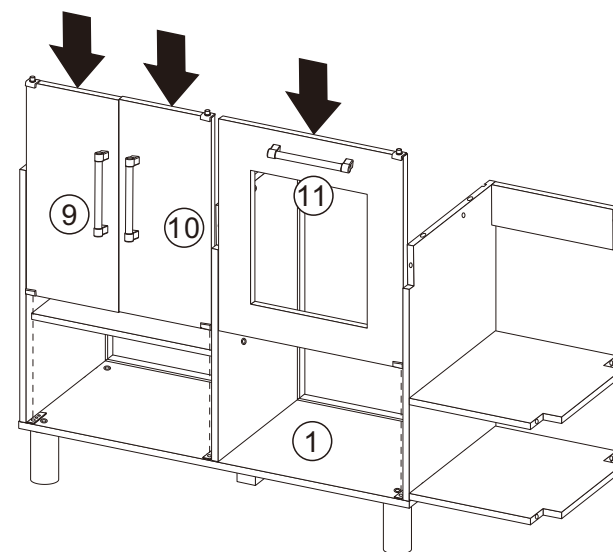
7



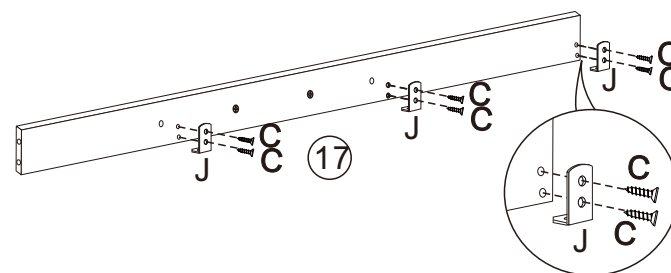
8



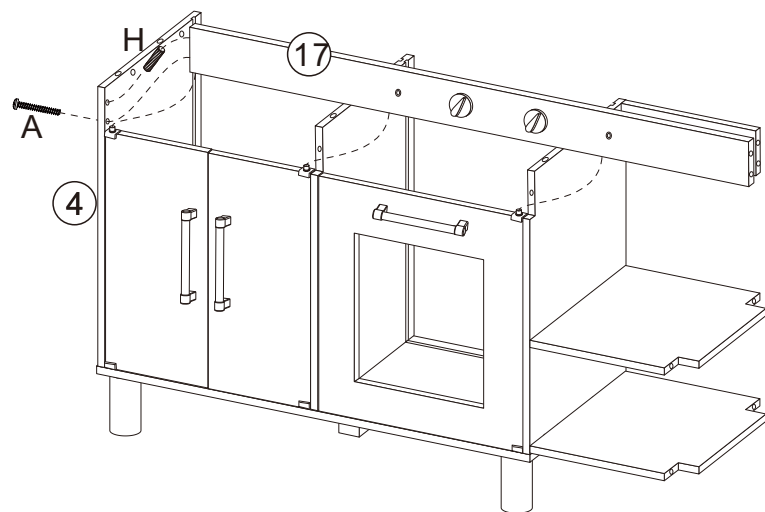
9



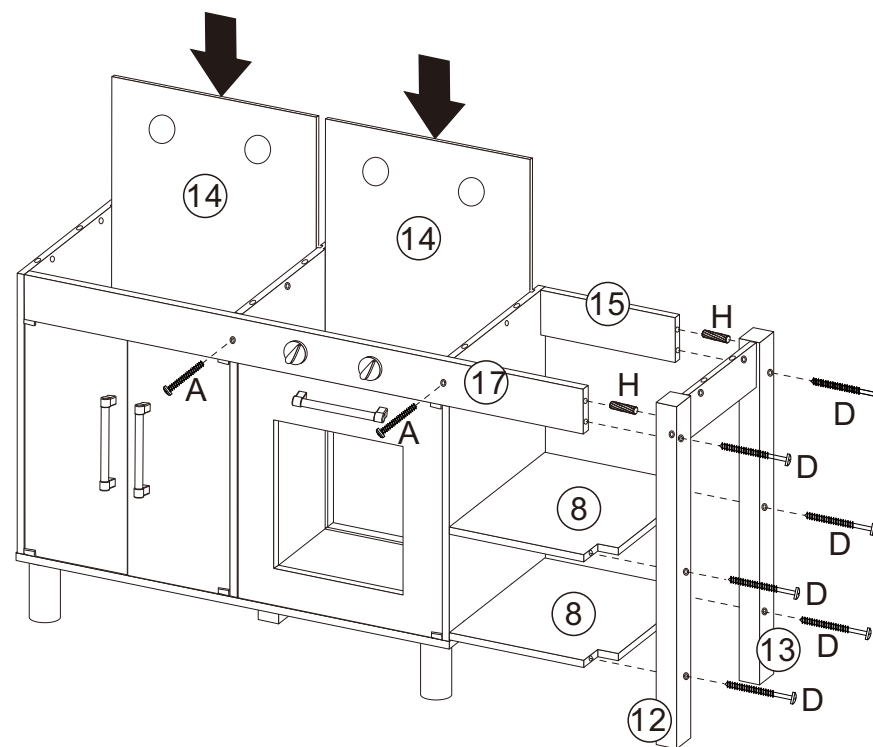
10



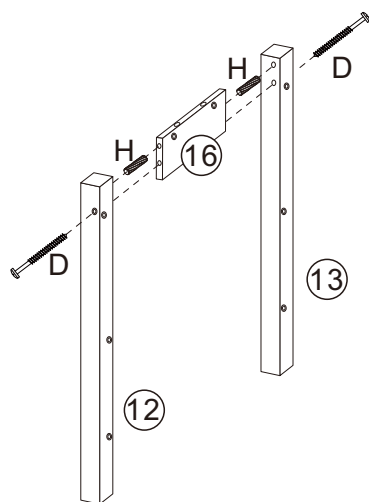
11



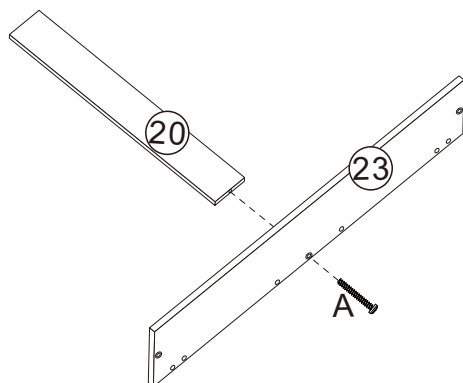
13



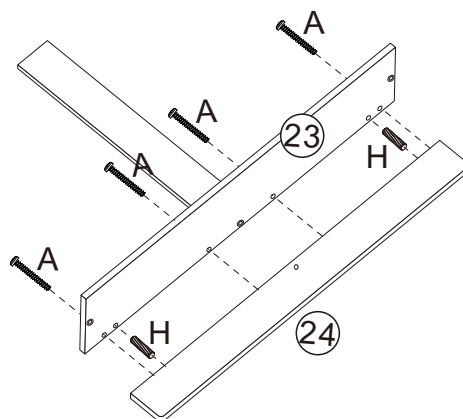
12



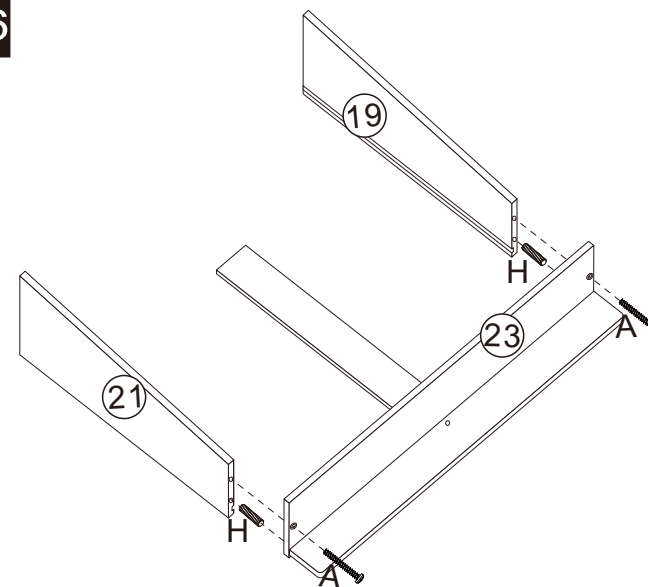
14



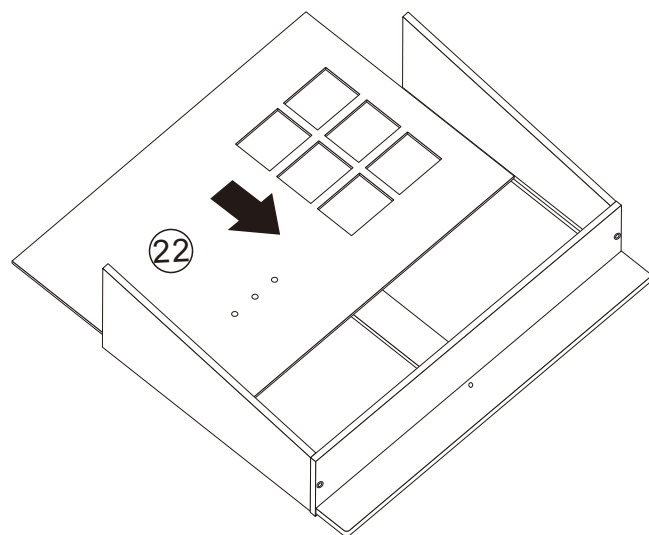
15



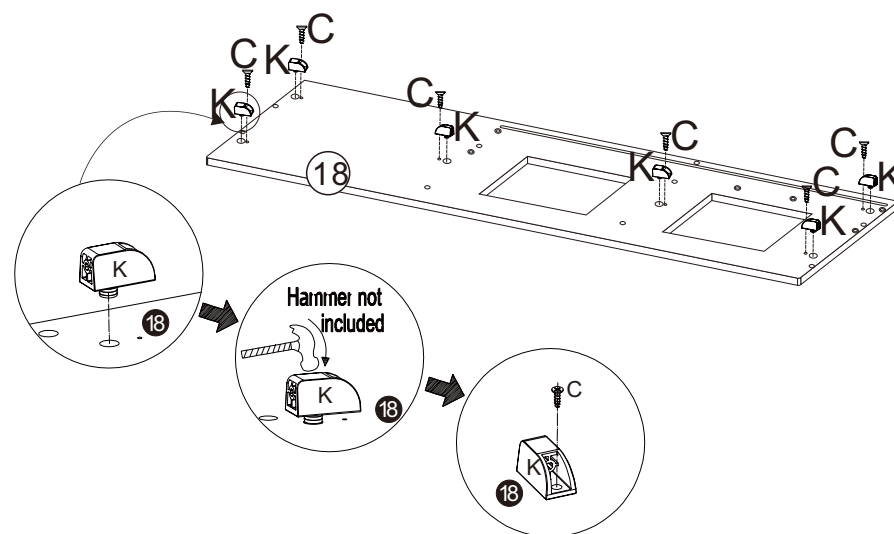
16



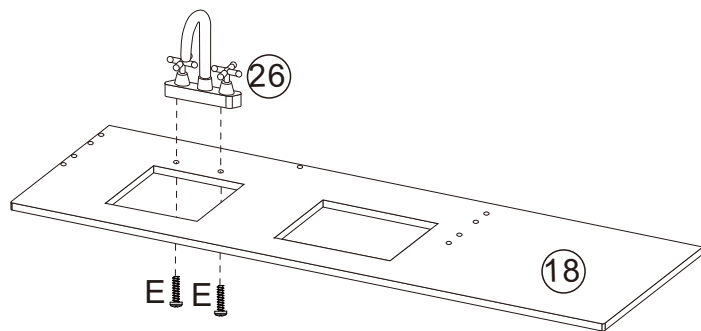
17



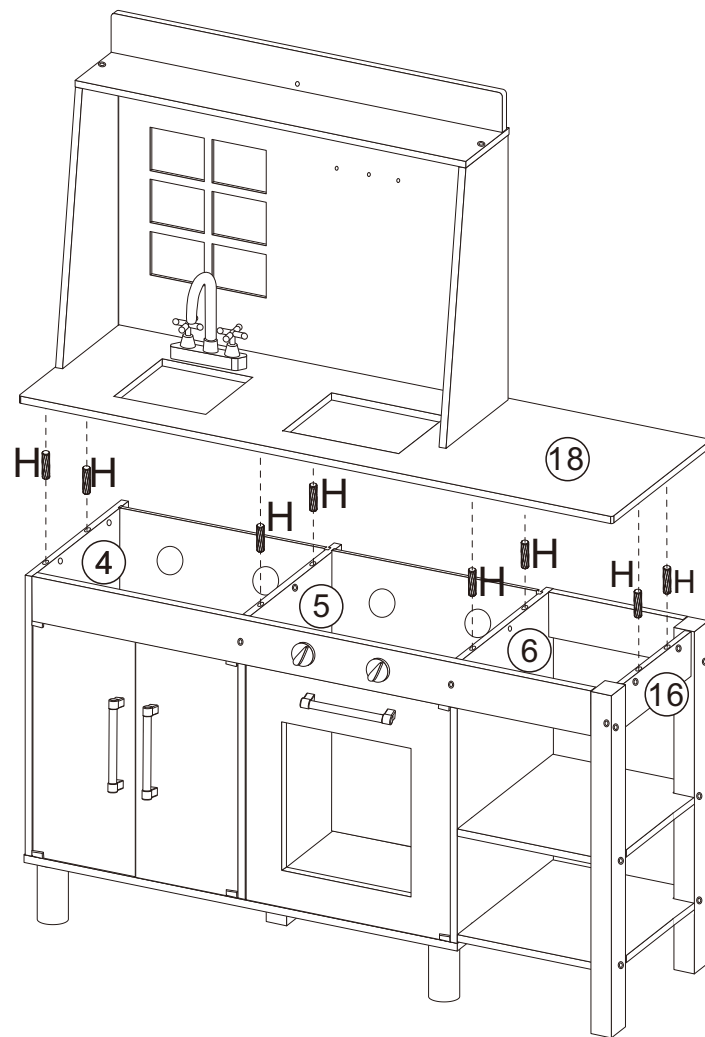
18



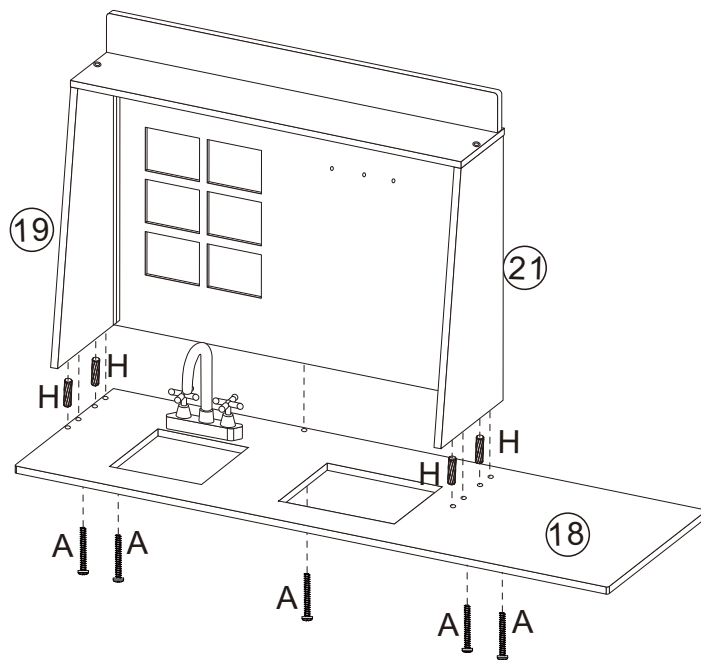
19



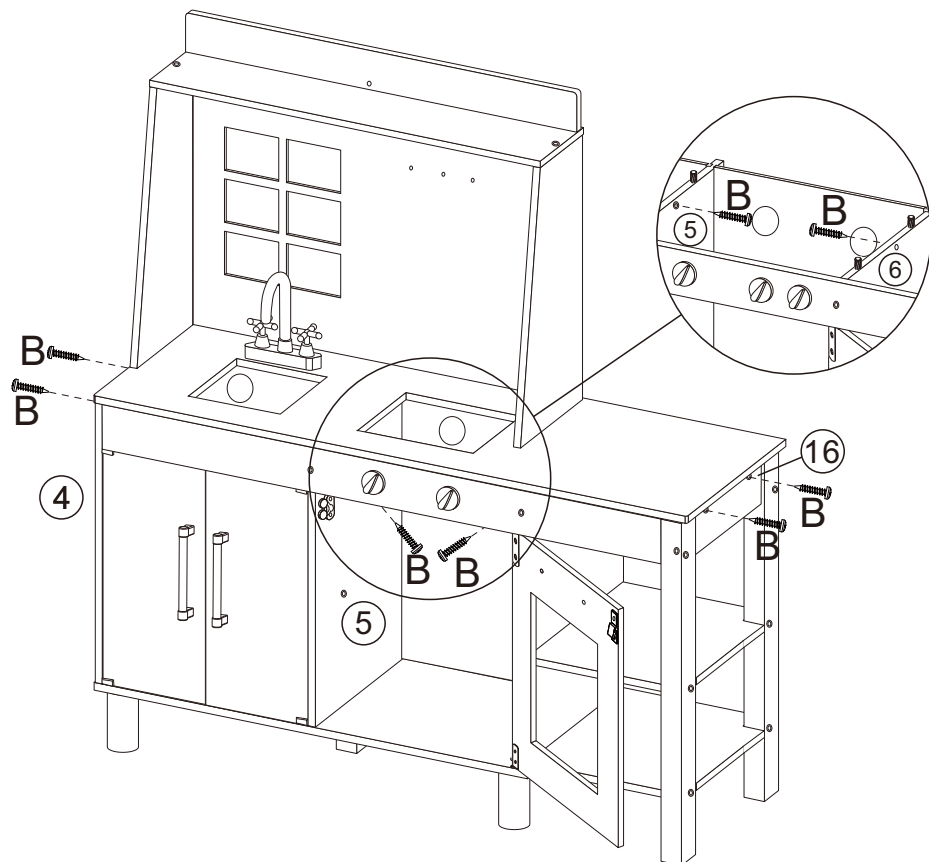
21



20

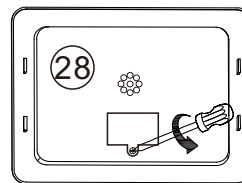


22

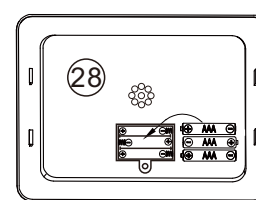


23

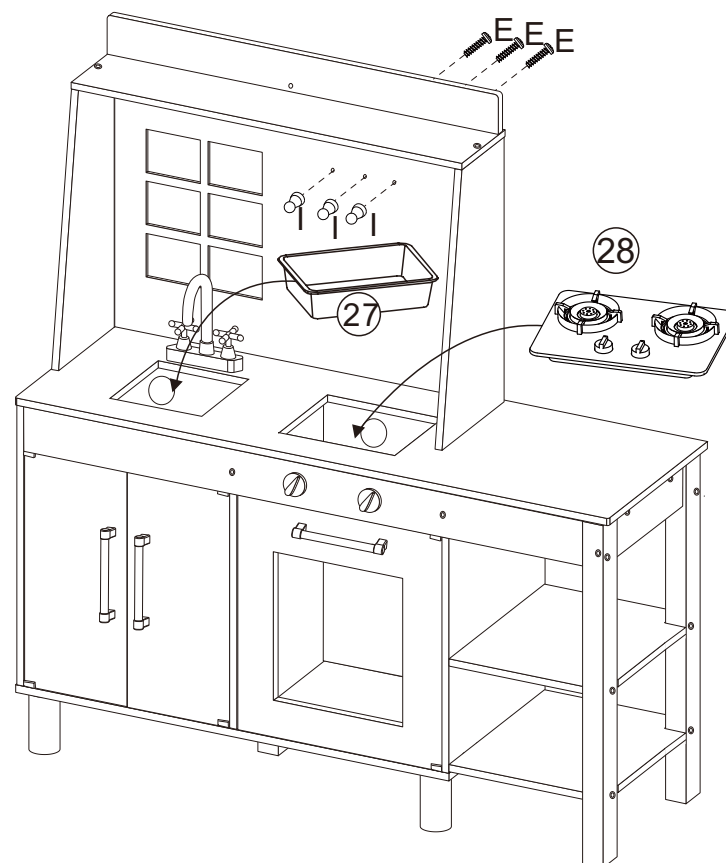
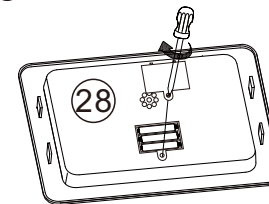
1 Screwdriver not included

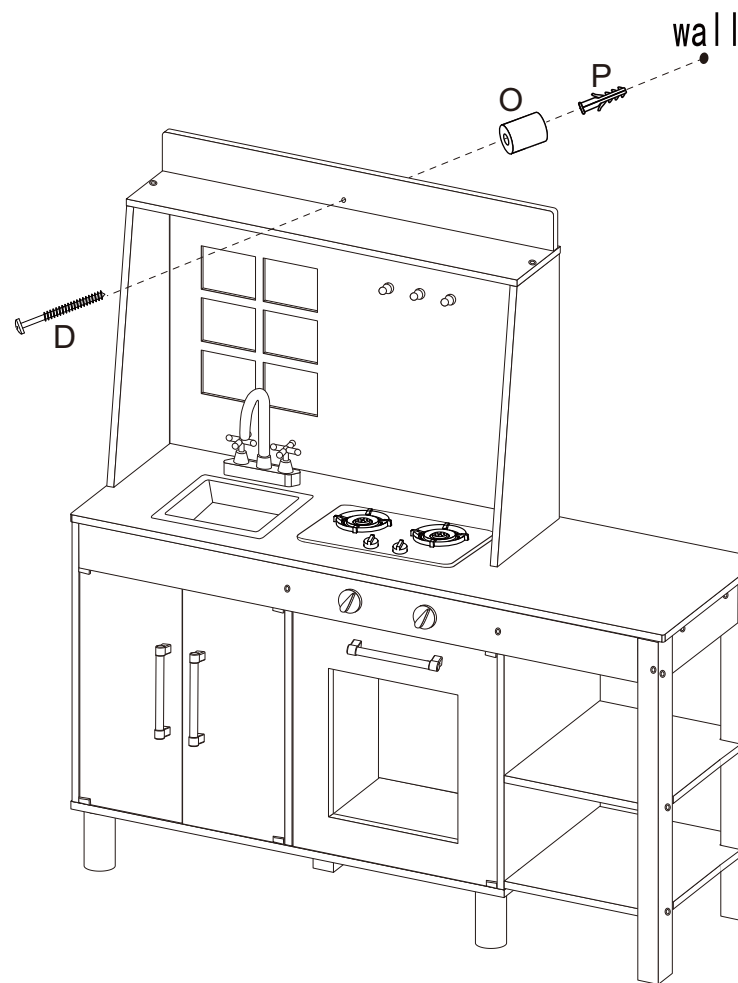


2 3 × 1.5V AAA size batteries(not included)



3





**WARNING:** PLEASE SECURE  
YOUR PRODUCT WITH  
THE SUPPLIED WALL FIXING.  
SCAN THE CODE FOR  
MORE INFORMATION.

