



## **In-Line LED Folding Scooters**

### **Owner's Manual**



**This manual contains important safety, assembly, operation and maintenance information.**

**Please read and fully understand this manual before operation.**

Save this manual for future reference.



Always wear approved helmet and safety equipment when using this product.

Thank you for your purchase of this product. If you have any queries or parts are missing or damaged, please contact below:

**HUNTER LEISURE PTY LTD**

94 KEILOR PARK DRIVE

TULLAMARINE VIC 3043

AUSTRALIA

Phone: 1800 632 792 (Australia)

0800 623 792 (New Zealand)

Email: [spares@hunterleisure.com.au](mailto:spares@hunterleisure.com.au)

## Index

• Safety Information.....	2-3
• Parts Assembly.....	4
• Assembly.....	5-7
• Operation.....	8
• Maintenance.....	8
• Warranty .....	9

Contact Information - Back Cover

### **WARNING TO AVOID SERIOUS INJURY:**

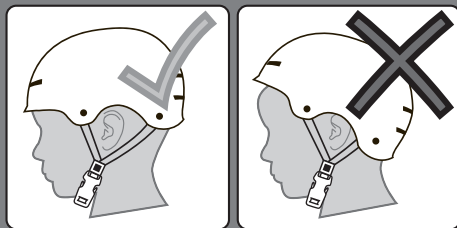
- The user must be **5+ years**. Max user weight: **50kgs**. Protective equipment should be worn.
- Avoid sharp bumps, drainage grates, and sudden surface changes. Scooter may suddenly stop. Watch out for pedestrians.
- Check and secure all fasteners before every ride.
- Avoid excessive speed associated with downhill rides.

### **WARNINGS:**

- This toy produces flashes that may trigger epilepsy in sensitized individuals.
- It is the responsibility of the adult to educate the child and determine if they are capable of operating the vehicle safely.
- Before using the vehicle the child must understand the controls and safety issues. They must also demonstrate the capability and skill to handle the vehicle and operate its controls to avoid falls or collisions.
- After complete assembly, remove and dispose of all protective material and poly bags. Keep poly bags away from child. Be sure to remove all packaging materials and parts from underneath the vehicle body.
- Ensure child uses common sense and safe practices when using the vehicle.
- An adult must unfold and fold this product (as equipped).
- At the end of useful product life, dispose according to local practice and requirements.


## ALWAYS WEAR YOUR HELMET WHEN RIDING THIS PRODUCT!

Always read the user manual that comes with your helmet to make sure it is fitted and attached properly to the wearer's head according to the fitting instructions described in the user manual.



## Safety and Warning Information

This product, like all wheeled vehicles, will provide safe, enjoyable transportation and recreation when used and maintained properly. Like bicycling, skateboarding, and in-line skating, riding this product can be dangerous even under the best of circumstances. We do not want you to get hurt. Please follow these safety rules. Keep children away during assembly.

 This symbol is important. It is the WARNING symbol. The warning symbol precedes safety instructions. Make sure the child understands these instructions. Failure to follow these instructions may result in injury to the rider or to others, or damage to the product.

### **WARNING TO AVOID SERIOUS INJURY:**

- Adult assembly required. An adult must unfold and fold this product (as equipped). Continuous adult supervision required. Do Not modify the product.
- **CHOKING HAZARD:** Not suitable for children under 3 years. Contains small parts.
  - Keep small loose parts and plastic bags out of the reach of children.
  - Not suitable for children under 3 years as foam pieces may break off and pose a choking hazard. Keep small children away when assembling.
- Never use near motor vehicles.
- Never ride with more than one person. Excessive weight may cause a hazardous or unstable condition.
- **Protective Equipment must be worn:** Always wear safety equipment such as a helmet that meets standard for your country with chinstrap securely fastened, knee pads, elbow pads, wrist guards, gloves and shoes.
- Do not use in traffic.
- Do not allow a child to ride the product at dusk, at night or at times of limited visibility.
- Do not allow a child to ride on roadways or alleys.
- Do not allow a child to ride off road, on grass or wet surfaces.
- Never use near streets, swimming pools (or other bodies of water), hills, steps, or sloped driveways.
- For use on smooth paved surfaces only.
- Understand all operating procedures before use.
- Do not tow or pull any objects with the product.
- Do not push or pull a child riding on the product.
- Use with caution, since skill is required to avoid falls or collisions causing injury to the user or third parties.
- Always comply with local laws and regulations.
- If anything does not operate properly, discontinue use.
- Replace worn or broken parts immediately with genuine replacement parts.
- Handlebar hand grip or tube end plugs should be replaced if damaged as bare tubes have been known to cause injury. All products with capped handlebar ends should be checked regularly to ensure that adequate protection for the ends of the handlebars are in place.
- Self-locking nuts and other self-locking fixings may lose their effectiveness when re-used.
- The toy shall be used with caution, since it requires great skill, so as to avoid falls or collisions causing injury to the user and third parties.
- Ensure all locking devices are engaged before each ride.
- Complies with EN14619:2019 CLASS A Standards.

Parts Assembly



#	Description	#	Description
1	Grip Handle (x2)	8	Power Button
2	T-tube	9	Rear Foot Brake
3	Stem Clamp	10	Rear Wheel
4	LED Light-up Stem		
5	Front Wheel		
6	Quick Release Lever		
7	Deck		

LED Light-up Stem and Deck

Install 3 AA batteries



LED Light Functions

1. Press the Power Button to turn on/off the LED Lights.
2. You can cycle through 7 different light functions by pressing on the Power Button. (the 8th time will turn off the lights)
3. To skip the cycle and turn off the lights hold the Power Button for 3 seconds.

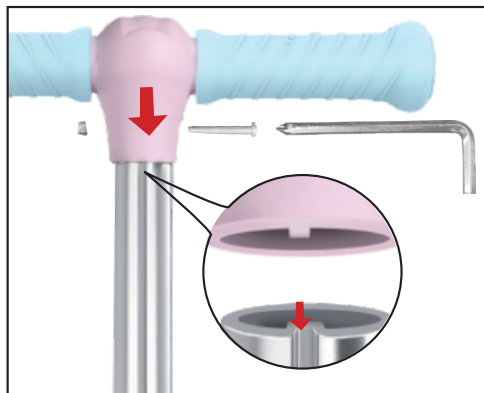
**Quick Note:** Remember to turn off the lights when you're done riding the scooter to save battery life!

## Assembly Instructions

### Handlebar Assembly

- Unscrew bolt and nut from stem using included hex screwdriver.
- Place handlebar onto stem.
- Insert bolt and nut through handlebar and stem.
- Tighten both using hex screwdriver.

**NOTE:** Place the nut on the left side when facing the front of the handlebar. Please make sure that the bolt and nut are secured and tightened prior to riding.



### Adjusting the Handlebar

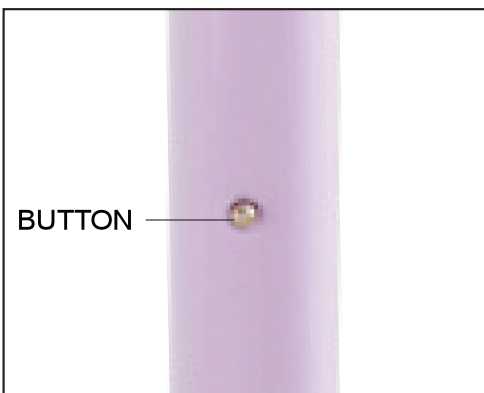
- Open the stem clamp.



### Height adjustment

- While pressing down the button, lift or lower the handlebar.
- When you hear it click, tighten & close stem clamp to lock. make sure the handlebar is secure.

Caution: The stem pin will not keep the stem secure, please make sure the stem clamp is tightened and closed before riding.



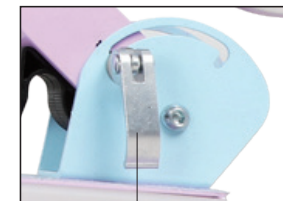
## LED Deck Operation

### Get Started

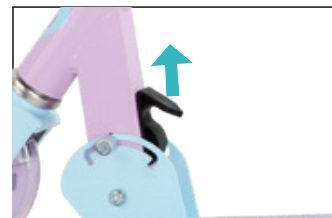
Unfolding/Folding the Handlebar



LOOSEN KNOB



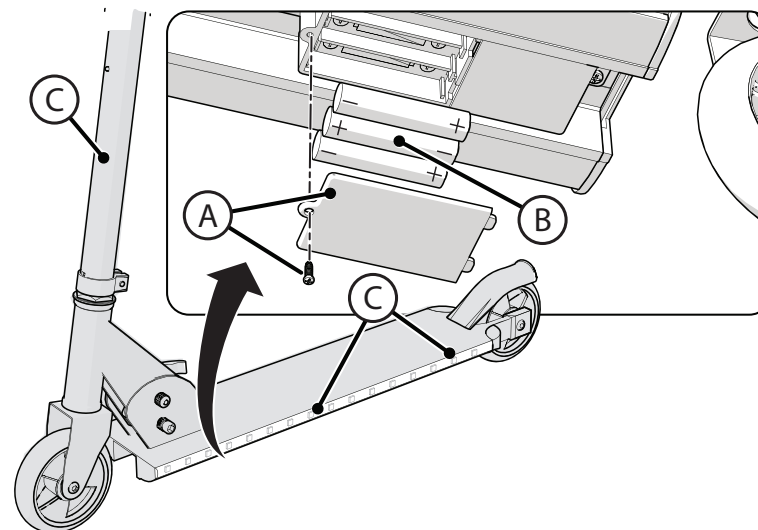
OPEN THE LOCKING LEVER



PULL UP ON THE FOLDING LEVER

- Pull stem up. once you hear it click, it's fully unfolded.
- Close the locking lever and tighten the knob.
- Reverse these steps to fold the handlebar.

### Installing the Batteries



#### Battery Replacement (with unit turned up-side down):

- Loosen the battery compartment cover Screw and remove the Cover **A**.
- Insert/Replace Batteries (3 - AA) **B** in the same position and orientation as originals - check layout molded in battery compartment.
- Re-install the compartment cover and tighten the screw.

#### Note:

- Batteries not included
- Lights will stop after 5 minutes of inactivity

## Installing the Batteries

### **WARNING:**

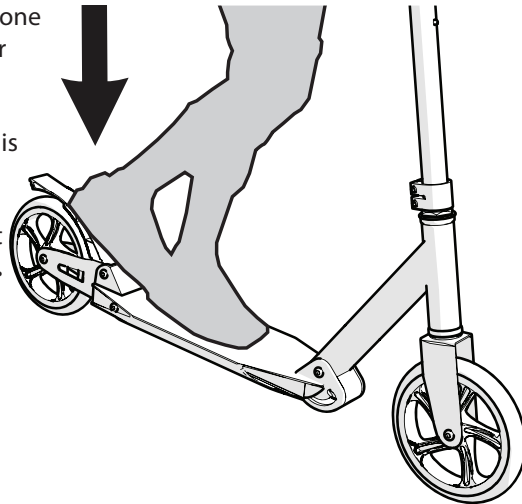
- Batteries should only be replaced by an adult.
- Non-rechargeable batteries are not to be recharged.
- If removable rechargeable batteries are used, they are only to be charged under adult supervision.
- Remove rechargeable batteries from the product before charging.
- Do not mix old and new batteries. Do not mix different types of batteries: alkaline, standard (carbon-zinc) or rechargeable (Nickel-cadmium).
- Insert batteries as indicated inside the battery compartment, ensure the correct polarity (+/-) as indicated.
- Remove batteries during long periods of non-use. Always remove exhausted batteries from the product. Battery leakage and corrosion can damage this product.
- Dispose of batteries safely.
- Never short circuit the battery terminals.
- Exhausted batteries are to be removed from the toy and disposed properly. Do not dispose of batteries in fire or household garbage as battery may explode or lead. Take them to a recycling facility.

## Operating and Braking

**RIDING:** The scooter is operated by placing one foot on the deck and pushing with the other foot.

**BRAKING:** On some models the rear fender is hinged for use as a brake. With heel of foot, push down on rear fender to slow and stop scooter. Allow extra braking distance in wet weather. **Fender will be hot after braking.**

**STEERING:** While moving forward, gently turn handlebar and lean slightly into turn.



## Maintenance

The scooter should be checked periodically for any loose, broken, or worn parts. Tighten any parts that are loose, and replace any worn or broken parts immediately. Periodic cleaning will prolong the useful life of this scooter.

### **SELF-LOCKING FASTENERS:**

With repeated use, Self-Locking Fasteners may lose their ability to lock to the threads and may come loose. Frequently check Self-Locking Fasteners and replace when worn.

### **INSPECTION OF THE BEARINGS:**

Frequently check the wheel bearings of the product. Replace the wheels when the bearings do not pass the following tests:

Lift each end of the product off the ground and spin the raised wheel by hand:

- The wheel should spin freely and easily.
- There should be no side-to-side movement at the wheel edge when pushed to the side with light force.

### **WEEKLY SERVICE:**

Apply a few drops of general purpose oil to the sides of each wheel axle. Verify that the axle fasteners are tight.

## Limited Warranty

### **General:**

#### **What does this Limited Warranty cover?**

This Limited Warranty covers defects in workmanship and materials for all parts of the product except those indicated below as not warranted.

#### **What must you do to keep the Limited Warranty in effect?**

*This Limited Warranty is effective only if:*

- Product is completely and correctly assembled.
- Product is used under normal conditions for its intended purpose (see the following section for excluded activities).
- Product receives all necessary maintenance and adjustments.
- Product is used for general transportation and recreational use only.

#### **What is not covered by this Limited Warranty?**

This product is designed for recreational use only. This Limited Warranty does not cover normal wear and tear, normal maintenance items, or any damage, failure, or loss that is caused by improper assembly, maintenance, adjustment, storage, or use of the product. This Limited Warranty does not extend to future performance.

#### **This Limited Warranty will be void if the product is ever:**

- Used in any competitive sport.
- Used for stunt riding, jumping, aerobatics or similar activity.
- Modified in any way.
- Modified with the addition of a motor.
- Ridden by more than one person at a time.
- Exceeds weight limit.
- Rented, sold, or given away.
- Used in a manner contrary to the instructions and warnings in this Owner's Manual.
- Our goods come with guarantees that cannot be excluded under the Australian/New Zealand Consumer Law. You are entitled to a replacement or refund for a major failure and for compensation for any other reasonably foreseeable loss or damage. You are also entitled to have the goods repaired or replaced if the goods fail to be of acceptable quality and the failure does not amount to a major failure.