

Multi Feed Candy Stand

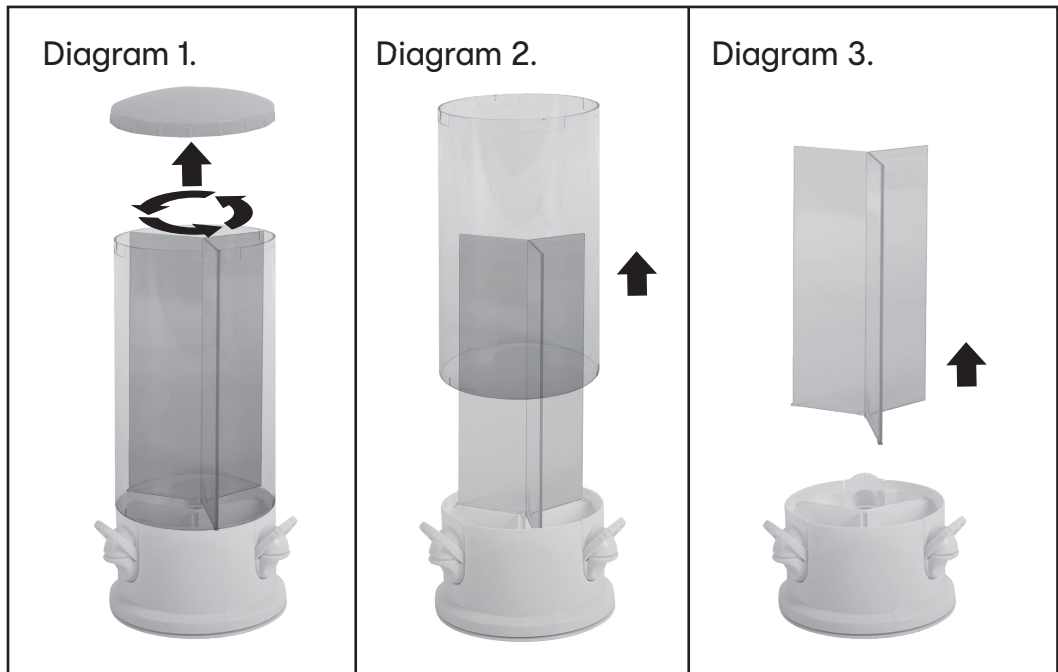
— INSTRUCTIONS —

Please clean before use:

1. Turn the cover to the left (counter-clockwise) to unlock and remove.
2. Turn the cylinder to the left (counter-clockwise) to unlock and remove from base.
3. Remove the divider from the channels at the base.
4. Use a soft-sponge with mild soap & water to wipe base, dispensers, cylinder, divider, and cover.

Only cylinder, divider, and cover can be washed under running water.

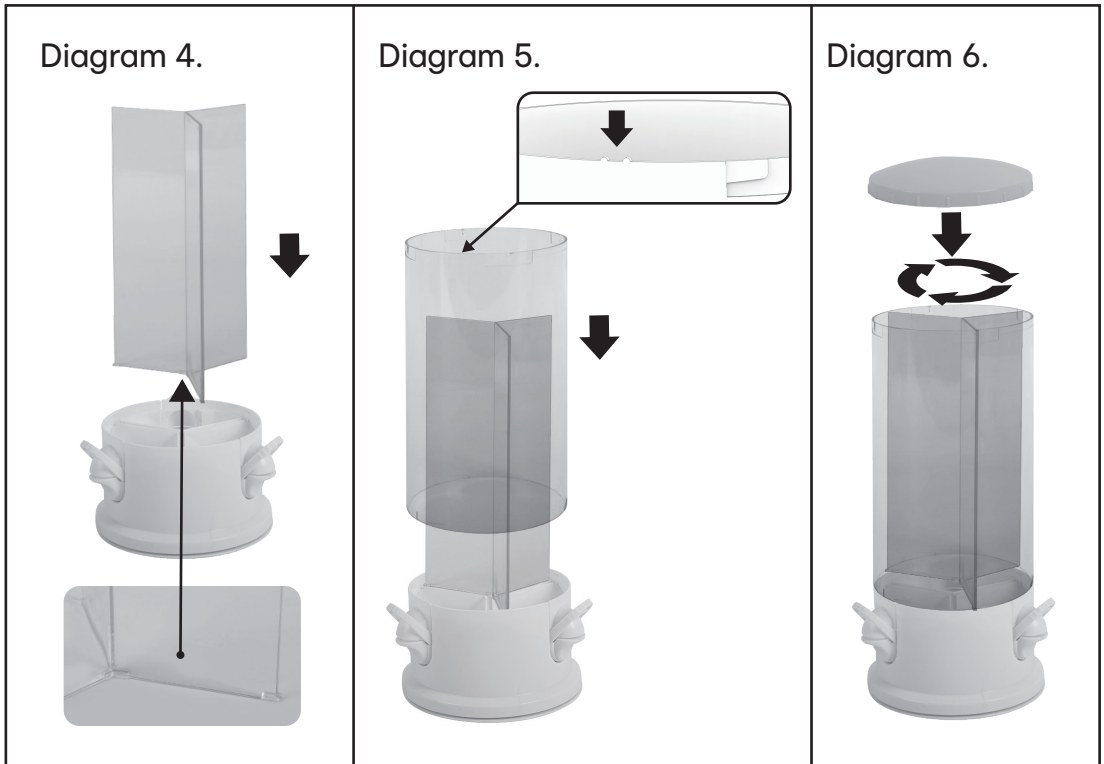
5. Before adding candy, all parts should be dry and soap free. Pat dry with paper towels or dish cloth before reassembly.



Warning: The candy machine is not dishwasher safe. To avoid damaging and scratching the item, do not use any household cleaning sprays or abrasive scouring pads.

Reassembly for use:

1. Locate the 3 dots on the divider's bottom edge and ensure they face down. Align with the base slot and insert vertically.
2. Locate the 2 dots on the cylinder's top edge and ensure they face up. Align with the base slot and insert vertically. Rotate the cylinder clockwise and ensure it locks in place.
3. Align the cover to the cylinder and rotate clockwise to lock after filling with candy.



Filling and Using Candy Machine:

- For best results, fill each compartment 2/3 full.
- Dispenser works best with smaller, round or uniform shaped candy or nuts up to 12mm, such as peanuts, almonds, cashews or chocolate covered nuts may work as well.
Best to test a small sample before filling large amounts.
- Place one hand underneath dispenser while gently pressing down on lever to dispense candy with the other hand.
- If candy gets stuck, do not force lever-gently shake the candy machine in a back & forth motion.

Warning: To prevent candy from spilling into the next compartment and mixing, do not turn candy machine in a horizontal or upside-down position. Candy or salt (if filling with salted nuts) particles may end up inside the base-this can be shaken out during cleaning.

Not recommended for using with seeds.

 **WARNING: CHOKING HAZARD**
SMALL PARTS. NOT FOR CHILDREN UNDER 3 YEARS.

PRODUCT MAY VARY SLIGHTLY FROM
IMAGE SHOWN.
PLEASE KEEP PACKAGING FOR
FUTURE REFERENCE.

REUSABLE AND HAND WASHABLE.
WASH THOROUGHLY AND DRY IT BEFORE USE.
INDOOR USE ONLY.
THIS IS NOT A TOY, PLEASE USE AS INTENDED.

43-567-386