

Instruction Manual

Expandable Hose

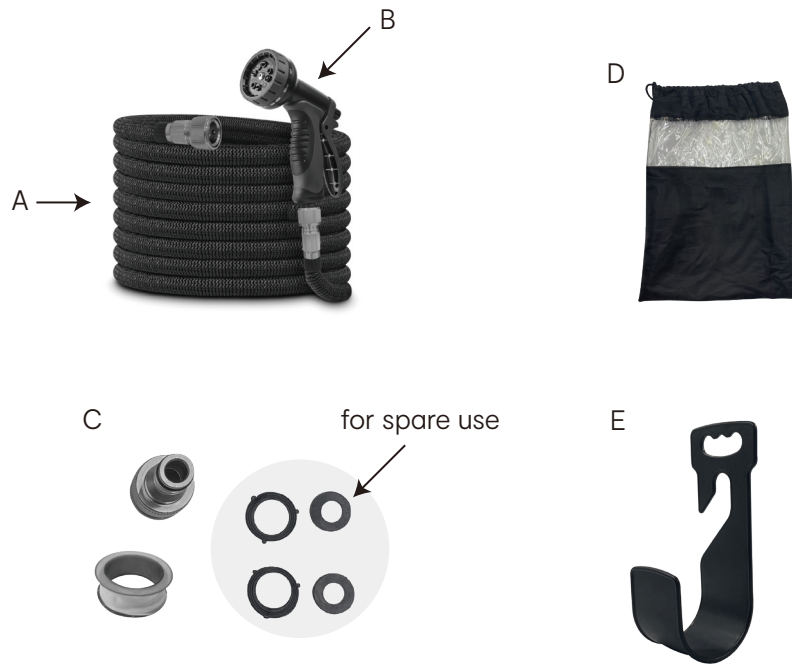
Keycode: 43561834

The Expandable Hose is a revolutionary product that automatically expands up to three times its original length when the water is turned on and contracts when the water is turned off. This lightweight hose eliminates the hassle of using heavy, bulky conventional hoses.

PLEASE READ THE INSTRUCTIONS AND IMPORTANT INFORMATION BELOW BEFORE USING YOUR EXPANDABLE HOSE.

NOTE: The Expandable Hose may require several cycles of expansion and contraction to reach its full length.

- Accessories:
- A: Hose x1
 - B: Water Gun x1
 - C: Parts Kit x1 (including Adapter x1, PTFE Tape x1, Rubber Rings x4)
 - D: Storage Bag x1
 - E: Plastic Hook x1



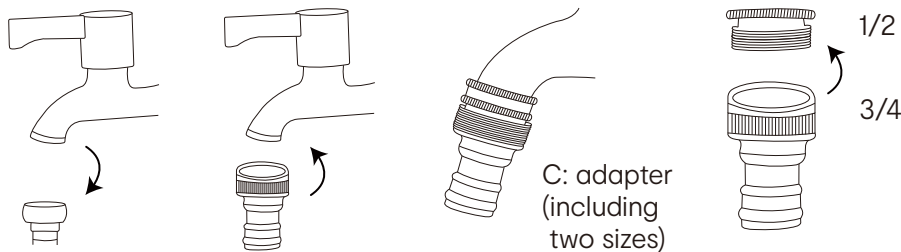
Installation Steps

Check to ensure that the hose and all accessories are complete, including the expandable hose, faucet connector, adapter (if required), etc., and inspect for any damage or missing parts.

1. Attach the faucet connector to one end of the expandable hose, ensuring a tight connection. You may wrap PTFE tape around the threads to enhance the seal. Align the hose end with the connector to the faucet outlet and turn it clockwise to tighten.



If the faucet outlet and hose connector do not match in size, use an adapter to make the connection. Follow the same steps as above for attaching the adapter.

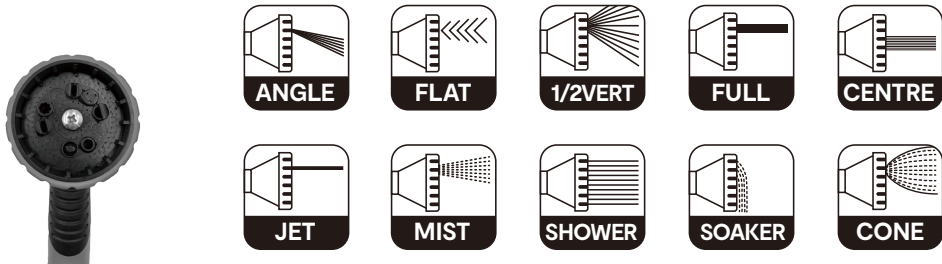


2. Connect the other end of the hose to the water gun.

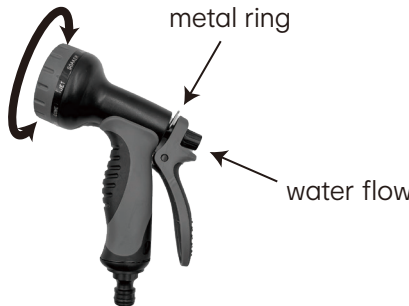


3. When you first turn on the tap, set the water flow to low to check for any leakage at the connections. If there is leakage, turn off the tap and reconnect the leaking part. If there is no leakage, you can fully open the tap to allow the hose to expand freely.

4. Adjust the dial on the water gun to select the desired mode.



5. The shower can be used hands-free by locking the metal ring on the back of the water gun. Adjust the water flow as desired by screwing or unscrewing the adjuster knob on the back of the trigger.



6. After use, turn off the faucet and carefully unscrew the connectors from both the faucet and the water gun. Drain any remaining water from the hose. Hang the hose in a cool, well-ventilated place. Once it is completely dry, store it in the storage bag.



NOTE: If you are using a sprinkler that is not attached to the ground (such as an oscillating sprinkler), when you turn the water off, your sprinkler may be dragged a short distance as the expandable hose shrinks back to its original length. This should not harm your Expandable Hose or your sprinkler.

WARNING

THE EXPANDABLE HOSE IS NOT INTENDED FOR DRINKING WATER USE

Do not drink from this hose. The Expandable Hose is a tool that is used and stored outdoors and can be exposed to conditions that can be harmful to humans such as:

- Mold & bacteria
- Lawn and Garden chemicals
- Animal waste
- Insects
- Stagnant water
- Other harmful substances

WARNING

THE EXPANDABLE HOSE IS NOT A TOY

Do not stretch or expand this hose when it is empty. The Expandable Hose is intended to expand only when the water is turned on. This hose can stretch to up to three times its “relaxed” or original length and if it is stretched with NO water in it and accidentally released, it will quickly snap back and it's in possible to cause personal injury.

Please do not expose it to direct sunlight when not in use. It should be air-dried and stored indoors.

MADE IN CHINA

CUSTOMER SERVICE:

KMART AU: 1800 124 125

KMART NZ: 0800 945 995

TARGET AU: 1300 753 567