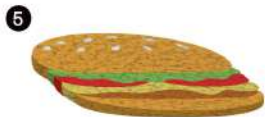


106x150mm (折后尺寸)



Apply a layer of glue over the whole back side of the coaster. Stick the felt shape onto the glue to complete your coaster.



Leave the glue to dry, then flip over the coaster ready for use.

**WARNING:** AVOID USING THIS PRODUCT ON A HARD SURFACE.

MADE IN CHINA  
CUSTOMER SERVICE:  
KIMART AU: 1800 946 125  
KIMART NZ: 0800 946 995  
TARGET AU: 1300 753 567

KEYCODE  
K: 43-557-691 | T: 71-023-397

anko

## Punch Needle Coasters Kit Instruction Manual

### Kit Includes

- 1 x printed fabric template
- 1 x embroidery hoop
- 8 x coloured threads
- 4 x felt sheets
- 1 x punch needle
- 2 x threaders
- 2 x tubes of glue
- 1 x instruction sheet

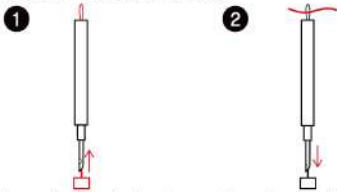


Guide Image

### Tips

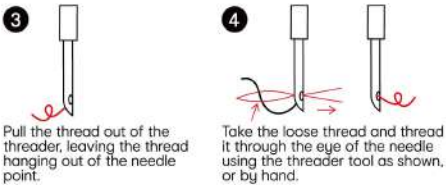
- Cut the printed fabric into 4 squares, to work on each coaster separately.
- Prepare the fabric on the embroidery hoop by separating the 2 circles and laying the fabric over the inner one. Place the larger circle over the top and press down to secure the fabric. Adjust the fabric position to ensure the design is centred. Tighten the screw and gently pull the fabric edges to ensure it's taut. Do not pre-wash the fabric.
- Cut the thread into 1 meter lengths to be more manageable.
- Begin your punch needling by following the guide image for colour reference.

### How To Thread A Needle



Insert the threader into the punch needle from the needle point and completely through the barrel until it comes out the opposite end of the tool.

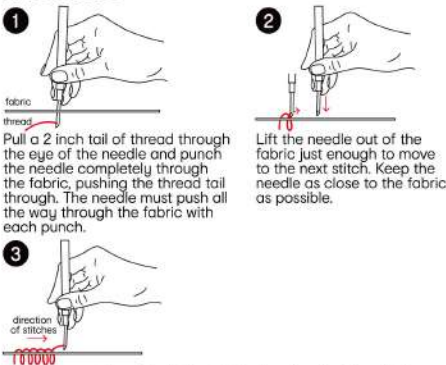
Insert the thread through the threader loop at the top of the tool, then pull the threader back out of tool through the needle point.



Pull the thread out of the threader, leaving the thread hanging out of the needle point.

Take the loose thread and thread it through the eye of the needle using the threader tool as shown, or by hand.

### Flat Stitches

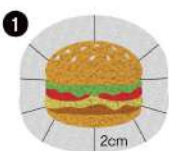


Pull a 2 inch tail of thread through the eye of the needle and punch the needle completely through the fabric, pushing the thread tail through. The needle must push all the way through the fabric with each punch.

Lift the needle out of the fabric just enough to move to the next stitch. Keep the needle as close to the fabric as possible.

Continue punching flat stitches in the direction that the design requires. To change colour or to complete the stitches, gently pull the needle out and cut the thread.

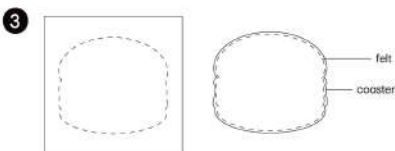
### How To Make A Coaster



After completing the punch needling, trim the fabric, leaving a 2cm border. Make 10 small cuts in the border fabric, shown above.



Apply a layer of glue to the outer edge of the stitched shape. Then fold the fabric edges down onto the glue.



Cut a shape from the felt sheet for the base of the coaster. The shape should be slightly smaller than the coaster.