

展开尺寸: 114*103mm
成型尺寸: 57*103mm
材质: 128g双铜
P.S: 双面印刷

正面

anko

12 month warranty

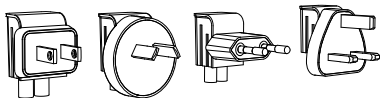
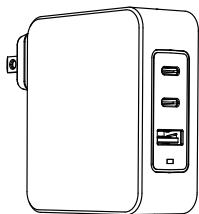
Thank you for your purchase.

This product is warranted to be free from defects in materials and workmanship for the period stated above, from the date of purchase, provided that the product is used in accordance with accompanying recommendations or instructions where provided. This warranty is in addition to your rights under the Australian Consumer Law. For New Zealand customers, this warranty is in addition to statutory rights observed under New Zealand legislation.

We will provide you with your choice of a refund, repair (where possible) or exchange (availability dependent) for this product if it becomes defective within the warranty period. The business will bear the reasonable expense of claiming the warranty. This warranty will no longer apply where the defect is a result of alteration, accident, misuse, abuse or neglect.

Please retain your receipt as proof of purchase and contact our Customer Service Centre as listed below, for the entity you purchased this product from, for any difficulties with your product. Warranty claims and claims for expense incurred in returning this product can be addressed to the respective Customer Service Centre.

Our goods come with guarantees that cannot be excluded under the Australian Consumer Law. You are entitled to a replacement or refund for a major failure and compensation for any other reasonably foreseeable loss or damage. You are also entitled to have the goods repaired or replaced if the goods fail to be of acceptable quality and the failure does not amount to a major failure.



65W GaN Wall Charger with Travel Plug User Manual

K: 43-552-931 | T: 70-997-750
Model: PD069D

MADE IN CHINA

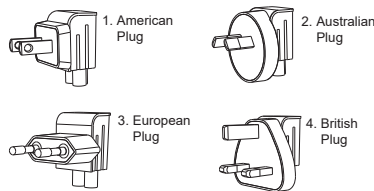
CUSTOMER SERVICE:

KMART AU: 1800 124 125
KMART NZ: 0800 945 995
TARGET AU: 1300 753 567

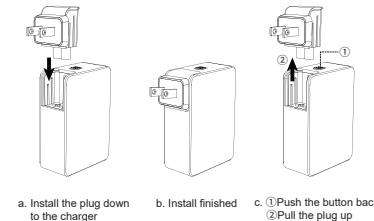
背面

Quick Start Guide :

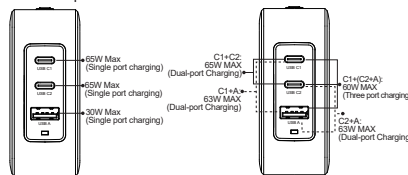
There are four different plugs available:



Please install and pull the plug off according to below instruction:



Power output:



Product specification

```

INPUT: 100-240V~50/60Hz 1.8A Max
USB-C1+USB-C2 OUTPUT: 5V=3A;9V=3A;12V=3A;15V=3A;
20V=3.25A; 65W Max
USB-A OUTPUT: 5V=3A;9V=3A;12V=2.5A; 30W Max
USB-C1+USB-C2 OUTPUT: 45W+20W; 65W Max
C1: 5V=3A;9V=3A;12V=3A; 15V=3A;20V=2.25A; 45W Max
C2: 5V=3A;9V=2.22A;12V=1.17A; 20W Max
USB-C1+USB-A OUTPUT: 45W+18W; 63W Max
C1: 5V=3A;9V=3A;12V=3A; 15V=3A;20V=2.25A; 45W Max
A: 5V=3A;9V=2A;12V=1.5A; 18W Max
USB-C2+USB-A OUTPUT: Share 5V=3A; 15W Max
USB-C1+(USB-C2+USB-A) OUTPUT:45W+15W; 60W Max
C1:5V=3A;9V=3A;12V=3A;15V=3A;20V=2.25A; 45W Max
C2+A: Share 5V=3A; 15W Max

```

Operating instructions

1. Connect the charging cable connector to the USB charger socket.

2. Insert the power plug into an easily accessible main socket. After charging is completed, simply unplug your device's USB plug from the product.

3. Charging three devices simultaneously in standard charge
***Note:** Charging speed may be reduced if the USB cable does not support PD or QC 3.0 fast charging.

4. For optimal charging, the device must support PD/QC functionality, and a compatible USB Power Delivery cable charging cable is required.

5. AUS/ EU/ UK/ USA plugs are included

*****For use with IT/AV equipment

Product features

Supports USB-C Power Delivery 3.0 (up to 65W) and Quick Charge 3.0 (up to 30W) fast charging for devices such as laptops, iPads, iPhones, iPods, Samsung and other Android smartphones, tablets, earphone ,speakers, cameras, and more.