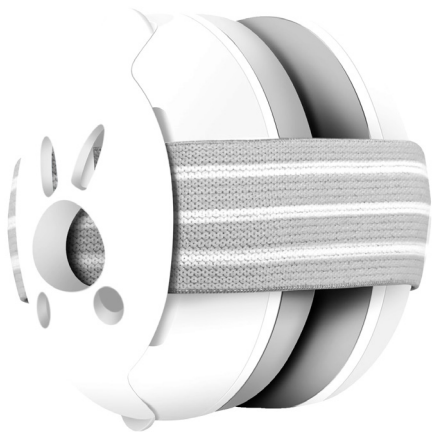


# **Baby Earmuffs**

## Instruction Manual



The photos and illustrations shown in this instruction manual are generic.  
The manufacturer reserves the right to change any specification or feature without prior notice.

**IMPORTANT: KEEP FOR FUTURE REFERENCE. READ CAREFULLY.**

To ensure correct operation and avoid damage, please read this instruction manual carefully before using this product.

## **Earmuffs for babies and toddlers**

1. Suitable for use in damaging noise environments.
2. Check earmuffs before each use to ensure they are in proper working condition. Store the earmuffs in the included storage bag to keep them clean.
3. Earmuffs and cushioned ear pads can wear out from use and should be checked for tears or leakage. Discontinue use if damaged.
4. Do not place hats or covers over the earmuffs as this may reduce noise protection effectiveness.
5. Ensure that the headband is appropriately fitted to the child. It should not be loose to avoid slipping off, or too tight to ensure baby's comfort.
6. Please note: Always ensure adult supervision when in use.
7. Earmuffs do not contain any metal parts.
8. Ensure to follow the instruction manual advice to ensure an extended service life of the product and its protective capabilities are maintained.
9. Earmuffs are not designed for unsupervised sleep or as a substitute for noise-reducing sleep environments.

## **Parts list**

- 1 x earmuffs set
- 1 x headband
- 1 x storage bag

## **Product specification**

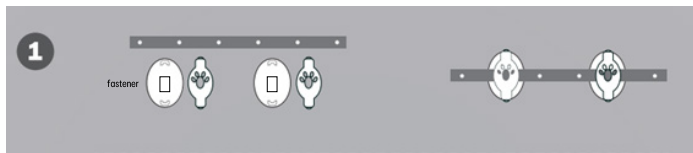
Material of headband: Polyester

Material of Earmuffs: ABS / PVC

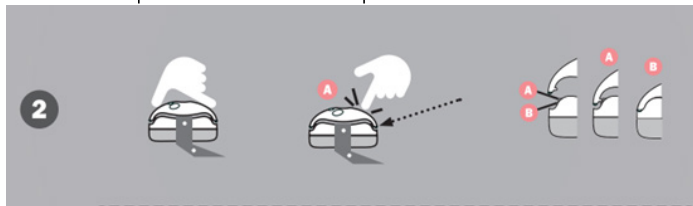
Product weight: 127g

## Instructions for use

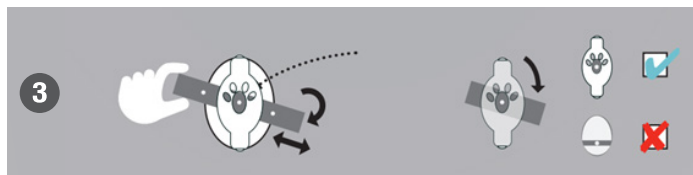
1. Open both snap covers at the back of the ear cups, stick the headband onto the fastener and feed the headband through the centre of each ear cup. Ensure that the anti-slip feature of the headband is facing the base of the ear cups.



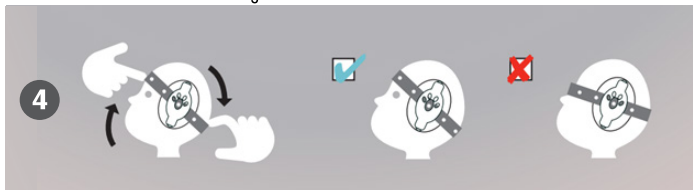
2. Secure the snap covers back onto the ear cups.



3. The earmuffs can be adjusted on a slight angle.



4. Place the earmuffs onto the child's head and fasten the grip fastening tabs at the back of the headband to comfortably secure in place. Ensure the earmuffs sit securely over the ears and do not obstruct the child's eyes.



## **Cleaning and Maintenance**

1. Remove the headband from the earmuffs and gently wipe the earmuffs with a damp cloth to remove dirt.
2. Headband can be hand or machine washed.
3. Thoroughly dry the earmuffs and headband before storing in the provided storage bag.

## **Storage**

When not in use, ensure that the product is completely dry and keep out of direct sunlight or any other heat sources.

## **Caution**

Always use the earmuffs under adult supervision. Never leave your child unattended, not even for a short time. Ensure you always have visibility of your child and regularly check the position of the earmuffs and the comfort of your child. The hearing of small children is very vulnerable. Loud noises and music can cause permanent hearing damage. Consequently, minimise exposing your child to situations and spaces with a lot of noise. Ensure your child always wears the earmuffs in noisy environments. Excessive usage time can have adverse long-term effects, e.g. due to the pressure on the head. Avoid prolonged use (over 1 hour at a time) without breaks to prevent pressure-related discomfort or skin irritation. When adjusting the headband, ensure it fits snugly but not too tight. Primarily, the headband should keep the earmuffs in place. Do not make it any tighter than needed. The heads of babies younger than 18 months are vulnerable because of the not yet closed fontanelles. The earmuffs should be placed onto the ears directly, without any obstructions (e.g. a hat). Check on your child regularly to see if the earmuffs enclose the ears properly. Ensure the earmuffs stay in place. Be aware of the risk of pulling/sliding away and ensure the earmuffs never cover the child's mouth and/or nose. This item is not a toy. Do not let your child play with the earmuffs or stick parts of it in their mouth. Do not let the child pull the inside foam out of the earmuffs and swallow it. Check the earmuffs regularly to ensure they are in proper working condition and store them in their original clean packaging. Earmuffs, and the padded ear cups especially, can wear out from use and should be checked for tears or leakage regularly. Discontinue use if damaged.

K: 43552542 T: 70995626 (Model.: JLR-80420, GS010)

**MADE IN CHINA**

**CUSTOMER SERVICE:**

**KMART AU:** 1800 124 125

**KMART NZ:** 0800 945 995

**TARGET AU:** 1300 753 567