

Storing your Squeeze Station:

- 1. After cleaning, store your squeeze station by placing the press tool into one of the filling tubes.
- 2. Insert the filling tubes into their designated storage nubs on the station base to keep components organised.



CARE INSTRUCTIONS:

- › Wash all parts before first use with warm water and mild detergent, or place in the top rack of the dishwasher (excluding food pouches and filling tubes).
- › Do not use harsh chemicals, solvents, or abrasive cleaners, as these may damage the plastic components.
- › Avoid leaving parts in direct sunlight or near heat sources to prevent warping or degradation.
- › Ensure all parts are fully dry before storage to prevent mould or bacterial growth.
- › Filling tubes and station base can be removed for thorough cleaning. Dry thoroughly before reuse and storage.

▲ WARNING: This product is not a toy. DO NOT leave baby unattended with product at any time. Keep this product out of baby's reach. Adult assembly required. DO NOT microwave or boil food in water. Heat food by submerging food pouch in hot water. Always test food temperature before serving to a child. Keep caps out of reach of children. Adult supervision is required. Food Pouch is not insulated- keep pouch cool during transportation. DO NOT use damaged pouches. Food Pouches are not a teething toy.

K: 43-549-375 | T: 70-985-054

MADE IN CHINA

CUSTOMER SERVICE:

KMART AU: 1800 124 125

KMART NZ: 0800 945 995

TARGET AU: 1300 753 567

Puree Dispenser
Instruction Manual



The illustrations shown in this manual are for reference only. Actual product may vary slightly. The manufacturer reserves the right to change any specification or feature without prior notice.

**IMPORTANT! PLEASE READ CAREFULLY BEFORE USE
AND KEEP FOR FUTURE REFERENCE.**

IMPORTANT! KEEP INSTRUCTIONS FOR FUTURE USE. Read all instructions carefully before assembling and using this product. Failure to follow each instruction can result in serious injury or death to your baby.

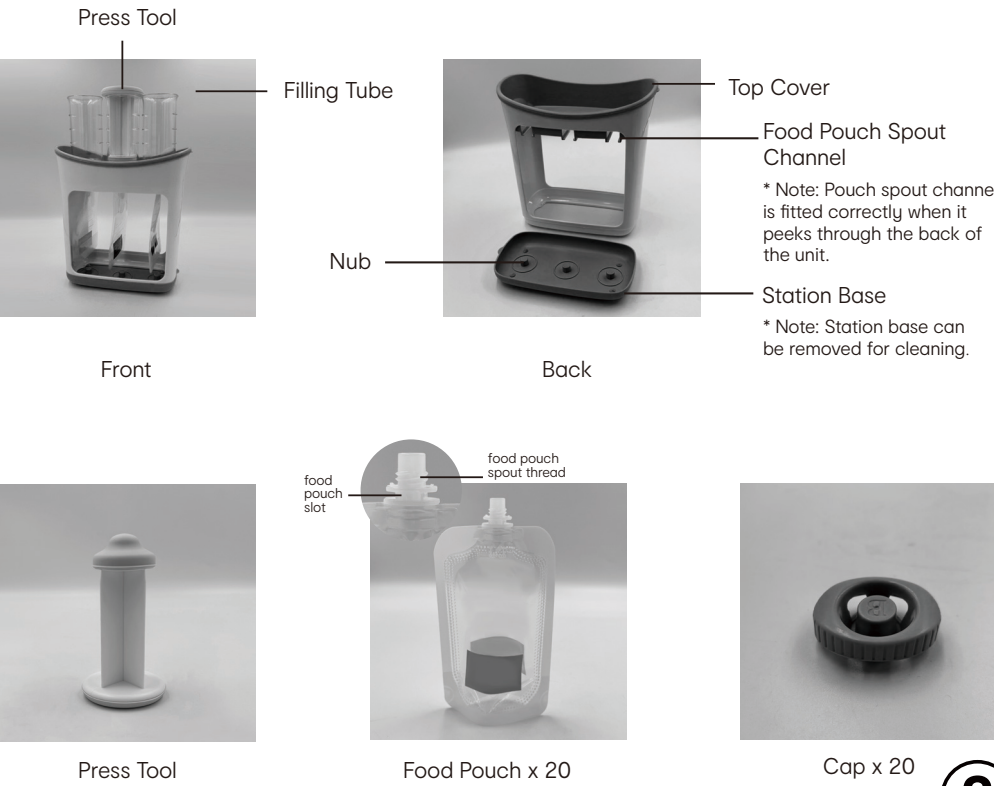
Helpful Hints:

When your baby is starting to eat solid foods, we recommend not giving the Squeeze Pouch directly to the child. Simply squeeze the pureed food from the Squeeze Pouch onto a spoon and feed baby. Once the child is able to self-feed, this is a good indication that they may be ready to use the Squeeze Pouch on their own. Adult supervision is required when child is eating. Consult your paediatrician to ensure your child is at the correct developmental stage for diet changes.

Note: Not suitable for use with fatty foods such as olive oil, corn oil, etc. Not suitable for liquids.

Parts List:

- › 1 x puree filling station with non-slip base
- › 3 x filling tubes
- › 1 x press tool
- › 20 x118mL reusable squeeze food pouches



Filling your Squeeze Pouches:



1. Slide Food Pouch Slot through the Pouch Spout Channel. Food Pouch will fit snugly when secure.



2. Rotate the filling tube clockwise to screw into the thread of the Food Pouch Spout.



3. Pour pureed food into the Filling Tube.



4. Use Press Tool to gently push the pureed food into the Food Pouch.



5. Unscrew the Filling Tube from the Food Pouch Spout.



6. Remove Food Pouch from the Squeeze Station.



7. Screw Cap onto Food Pouch and refrigerate or freeze.