



# DOUGH COLOURS MIXING CHART

Red	+	Yellow	=	Orange	Red	+	Blue	=	Purple
Red	+	Green	=	Brown	Red	+	Orange	=	Orange
Yellow	+	Blue	=	Green	Green	+	Blue	=	Green

# NOODLE BAR

42969

6+ years

**WARNING: IMITATION FOOD.  
NOT FOR HUMAN CONSUMPTION.**

**TRY THE  
ROLLER!**



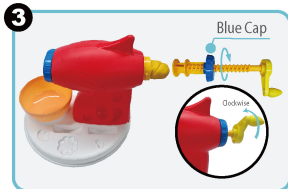
Create pretend pasta dishes like a chef!



Snap the base onto the bottom of the noodle machine.



Choose your noodle shape and twist one of the four different Moulding Heads onto the Noodle Machine Head.



Add dough into the back opening. Insert the spiral handle, and tighten the blue cap onto the back. Place the bowl underneath the Noodle Machine Head. Turn the handle clockwise to fill the bowl with noodles.



Add fun toppings. Press dough into the various Moulds to create a pasta delight. To clean the machine, allow the dough to dry, then scrape it away or vacuum.

