




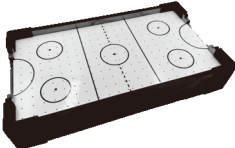

6+
years



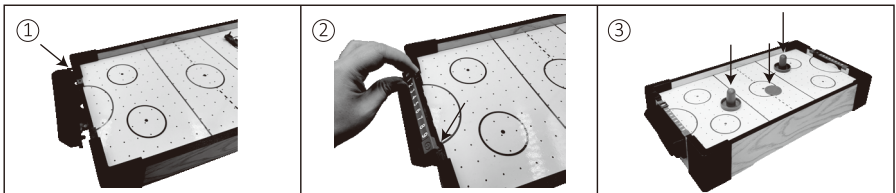
TABLETOP AIR HOCKEY

Instructions

Components:

		
A: 2 x Goal Pieces	B: 2 x Pushers	C: 2 x Pucks
		
D: 1 x Air Hockey Table	E: 2 x Score Trackers	

Assembly Instructions:



Game Setup & Rules:

1. Place the game board on a flat and stable surface, ensuring it is clean and free of obstacles.
2. Each player stands on one side of the rink and holds a pusher.
3. Ensure the fan underneath the table is switched on before starting the game.
4. Decide which player starts first by flipping a coin (not included) or another fair method.
5. Players use their pushers to hit the puck, aiming to score while defending their own goal.
6. When the puck enters a goal, the scoring player earns one point, and the game restarts from the centre.
7. Players can set a target score (e.g. 9 points) or play within a time limit (e.g. 5 minutes), with the highest-scoring player winning when time runs out.
8. After each game, players should switch sides of the air hockey table before starting a new match.
9. Once the game is over, turn off the fan to conserve energy.

Fouls:

- 1. Players must not touch the puck with their hands to interfere with gameplay.
- 2. Strikers should not be lifted or slammed too hard to avoid damaging the equipment or causing injury.
- 3. If the puck flies off the table, the last scoring player restarts the game.

Battery Usage Instructions :

Battery Type :

This product requires 3 × AA batteries (batteries not included).

Installing Batteries:

- 1. Battery installation or replacement must be performed by an adult.
- 2. Open the battery compartment cover (a screwdriver is required, not included).
- 3. Insert the batteries correctly according to the polarity markings (+/-) inside the compartment.
- 4. Close the battery compartment cover and screw it properly.

Replacing Batteries:

- 1. Replace all 3 batteries with new ones when the product slows down or stops working.
- 2. Do not mix old and new batteries or different types of batteries.
- 3. Use the same brand and model of batteries for optimal performance.

Safety Precautions:

- 1. Do not attempt to recharge non-rechargeable batteries.
- 2. Do not mix carbon, alkaline, or rechargeable batteries.
- 3. Do not dispose of batteries in fire to avoid explosion or leakage.
- 4. Do not short-circuit the battery terminals to prevent hazards.
- 5. Remove the batteries if the product will not be used for an extended period to avoid battery leakage.
- 6. If battery leakage occurs, stop using the product immediately, wipe the battery compartment clean with a dry cloth, and avoid contact with leaked substances.

Environmental Protection & Disposal:

Dispose of used batteries properly according to local regulations to prevent environmental pollution.

Adult assembly required.
Please keep instruction manual for future reference.



WARNING: CHOKING HAZARD
SMALL PARTS. NOT FOR CHILDREN UNDER 3 YEARS.

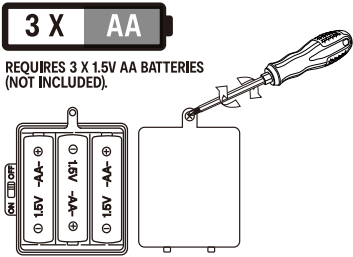
WARNING: FOR SAFETY REASONS, REMOVE ALL TAGS, LABELS AND PLASTIC FASTENERS BEFORE GIVING THIS TOY TO YOUR CHILD.

K: 43-545-476 | T: 70-989-120

MADE IN CHINA

CUSTOMER SERVICE:

KMART AU: 1800 124 125
KMART NZ: 0800 945 995
TARGET AU: 1300 753 567



WARNING: BATTERIES ARE TO BE INSERTED WITH THE CORRECT POLARITY (+ AND -). DO NOT MIX DIFFERENT TYPES OF BATTERIES OR NEW AND USED BATTERIES. NON-RECHARGEABLE BATTERIES ARE NOT TO BE CHARGED. RECHARGEABLE BATTERIES ARE ONLY TO BE CHARGED BY AN ADULT. THE SUPPLY TERMINALS ARE NOT TO BE SHORT-CIRCUITED. REMOVE BATTERY FROM THE TOY WHEN NOT IN USE FOR EXTENDED TIME OR WHEN BATTERIES BECOME EXHAUSTED. BATTERY INSTALLATION BY AN ADULT IS REQUIRED. DISPOSE OF BATTERIES RESPONSIBLY. DO NOT DISPOSE OF IN FIRE.