



Portable USB Pet Vacuum Cleaner
KS-7612
User Manual



**PLEASE READ AND SAVE THESE
INSTRUCTIONS FOR FUTURE REFERENCE**

IMPORTANT SAFEGUARDS

When using any electrical product, always follow these basic safety precautions:



READ ALL INSTRUCTIONS BEFORE USE.

1. Read all instructions before using this appliance.
2. This appliance is not intended for use by persons (including children) with reduced physical, sensory or mental capabilities, or lack of experience and knowledge, unless they have been given supervision or instruction concerning use of the appliance by a person responsible for their safety.
3. Children should be supervised to ensure that they do not play with the appliance.
4. The appliance must only be supplied at standard USB power source rated at 5Vd.c. 2A specification.
5. Always turn the appliance OFF and disconnect with the USB cable when not in use, before cleaning or storing.
6. Never use the appliance if the cable, main unit or any part are damaged.
7. Do not store this appliance outdoors. Do not charge the battery outdoors.
8. Use of accessories not recommended or supplied with the product may cause fire, electric shock or personal injury.
9. Do not allow children to operate or play with the appliance.
10. Do not touch the power plug or the product with wet hands.
11. Never immerse the appliance in water or other liquids.
12. For electrical safety, any repairs to the product should be carried out by a qualified electrical person only or the product must be disposed of.
13. Keep hair, loose clothing and all other parts of the body away from moving part and air inlet of the appliance during operation.
14. Do not block the air outlet during use.
15. This appliance must be always used in accordance with the user instructions supplied with the product and must not be used for other purposes.
16. Misuse may cause serious injury.
17. Use the vacuum cleaner only on dry surfaces and avoid using it on wet/moist pets or surfaces.
18. **Remove any obstructions if the brush is blocked.** Ensure to turn the appliance OFF before removing the obstruction.
19. Keep the brushes free of fibers, hairs, and other objects that could impede proper functioning.
20. Ensure that the charging cable is not stretched tightly or kinked.
21. Keep the appliance away from flammable and explosive substances.
22. The appliance may heat up while it is charging. Place the appliance in a well-ventilated location during the charging process and do not cover it.
23. Switch the appliance off immediately and disconnect any connected cables from the appliance

if you hear any abnormal noises, smell fumes or notice any smoke. Have the appliance checked by a qualified electrical person before using it again.

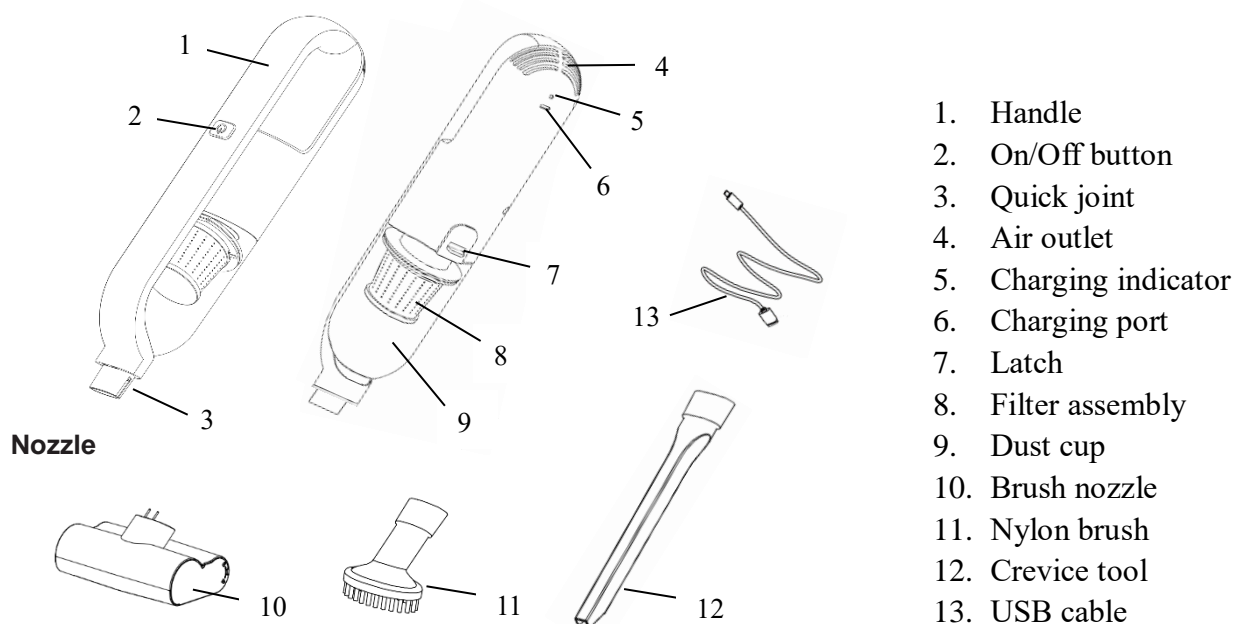
24. Do not vacuum any burning, smoking or flammable objects.
25. This product is for household use only and not designed for commercial use.
26. Do not use solvents, abrasive or aggressive cleaning agents to clean the appliance.
27. The product is equipped with a lithium-ion battery. Do not throw the rechargeable battery into fire and do not subject it to high temperatures. There is a risk of an explosion and or fire!
28. This appliance contains batteries that are non-replaceable.
29. This appliance must only be supplied by AS/NZS 61558.1 & AS/NZS 61558.2.16 certified power supply unit with SELV output voltage corresponding to the marking on the appliance.
30. For cleaning, please refer to CLEANING AND STORAGE section.

CAUTION!

31. The product has built-in lithium-ion batteries. Pay attention to the following:
 - a) Only use and store the product in an environment where the temperature is between -5°C and +35°C.
 - b) If not used for a long time, re-charge every three months to prevent battery damage.
 - c) Charging time may be longer when the room temperature is below 10°C.
 - d) Charge the battery when the battery power goes low, avoid allowing the battery to go flat.
32. DO NOT squeeze, puncture, or short circuit the product or put it into water, fire or use in an environment where the temperature is higher than 60°C.
33. Do not expose the product to high temperatures (above +35°C), strong magnetic fields, near flammable and explosive gases (such as natural gas, methane, etc.) to avoid accidents such as abnormal operation or fire.

**SAVE THESE INSTRUCTIONS
FOR FUTURE REFERENCE**

KNOW YOUR PET VACUUM CLEANER



IMPORTANT!

Please make sure that your appliance is received with the right components shown above. Check everything carefully before use. If any parts are missing or damaged, return the product to place of purchase for replacement.

When using the appliance for the first time, carefully remove all internal and external packaging and dispose them responsibly.

BEFORE FIRST USE

- Fully charge the appliance before first use.
- Always power off the appliance before charging.
- **The supplied USB charging cable should be inserted into the standard USB power source rated at 5Vd.c. 2A specification.**

WARNING: Use only the supplied USB charging cable to charge the appliance.

- Red indicator lights up when charging, and the light gets green when fully charged.
- The charging time is around 3.5 hours.
- Allow the appliance to rest for 20 minutes after 5 minutes use.
- The total running time approximate 15minutes after fully charged.

USE YOUR PET VACUUM CLEANER

Attach the desired accessory to the main unit.

Press on/off button to start/stop vacuum cleaning.

The indicator will light up in green during working and flashes in red when the battery is low.

To use the nylon brush

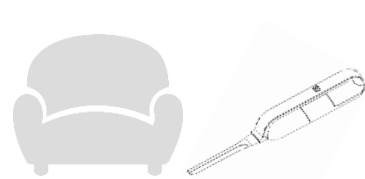
The nylon brush is used to clean loose pet hair from carpets and fabric surfaces.



To use the crevice tool

The crevice tool is used to clean loose pet hair or from tables, chairs, sofas, keyboards and various other surfaces.

It's narrow and elongated shape enables it to reach and clean tight spaces and crevices where pet hair tends to accumulate.



To use the brush nozzle

The brush nozzle can remove pet hair, lint and debris from clothes, sofas and other fabrics. It picks up and traps pet hair and other dust particles when rolling over the surface.



Tips:

If you encounter a lot of hair clogging in the suction area, you can manually remove the hair from the suction area by pulling it out before continuing to vacuum. In this way, you can maintain optimal performance and ensure efficient cleaning.

Keep the brushes free of fibers, hairs, and other objects that could impede proper functioning.

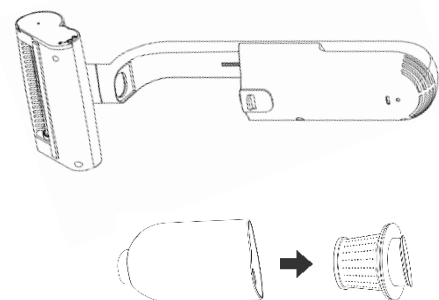
Do not use the appliance on any wet or moist surface.

If a brush fails during operation, turn off the appliance and remove the blocks.

Empty the dust

- Push the latch and take out the dust cup.
- Pull out the filter assembly and empty the dust cup.

IMPORTANT! Ensure that the filter assembly is installed in the dust cup before attaching the dust cup to the main unit.



CLEANING AND STORAGE

To detach the roller

Unlock the side cover of the brush nozzle, pull out the brush nozzle with side cover.

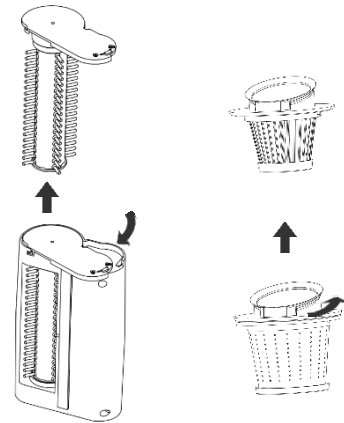
To disassemble the filter assembly

Rotate the rubber parts anti-clockwise to detach the paper and stainless steel filters.

- Remove hair and fibers from the bristles.
- Pat off the dust in the paper filter.
- Use a dry cloth to clean the product including all the parts.

Do not use abrasive material to clean the appliance.

Do not immerse the appliance in water or any other liquid.



- Ensure the product is clean before storage.
- Store the product indoors.
- This product contains a Li-ion battery. It should be stored in a clean, dry, ventilated room with an ambient temperature range of -5°C to $+35^{\circ}\text{C}$ and a relative humidity of 25% to 75%.

TECHNICAL SPECIFICATION

Input: 5Vd.c. 2A

Battery: Li-ion 11.1V 2000mAh

12 Month Warranty

Thank you for your purchase.

Your new product is warranted to be free from defects in materials and workmanship for the period stated above, from the date of purchase, provided that the product is used in accordance with accompanying recommendations or instructions where provided. This warranty is in addition to your rights under the Australian Consumer Law.

For New Zealand customers, this warranty is in addition to statutory rights observed under New Zealand legislation.

We will provide you with your choice of a refund, repair (where possible) or exchange (availability dependent) for this product if it becomes defective within the warranty period. The business will bear the reasonable expense of claiming the warranty.

This warranty will no longer apply where the defect is a result of alteration, accident, misuse, abuse or neglect.

Please retain your receipt as proof of purchase and contact our Customer Service Centre as listed below, for the entity you purchased this product from, for any difficulties with your product.

Warranty claims and claims for expense incurred in returning this product can be addressed to the respective Customer Service Centre.

Our goods come with guarantees that cannot be excluded under the Australian Consumer Law. You are entitled to a replacement or refund for a major failure and compensation for any other reasonably foreseeable loss or damage. You are also entitled to have the goods repaired or replaced if the goods fail to be of acceptable quality and the failure does not amount to a major failure.

Contact for Kmart purchases	Contact for Target purchases
Kmart Australia Ltd. C/- Customer Service Centre 690 Springvale Road, Mulgrave Vic 3170 Customer Service: 1800 124 125 (Australia) or 0800 945 995 (New Zealand) or via Customer Help at kmart.com.au	Target Australia Pty Ltd C/- Customer Service Centre 2 Kendall Street, Williams Landing, Vic, 3027 Customer Service: 1300 753 567 or via Customer Help at target.com.au/help/contact-us