

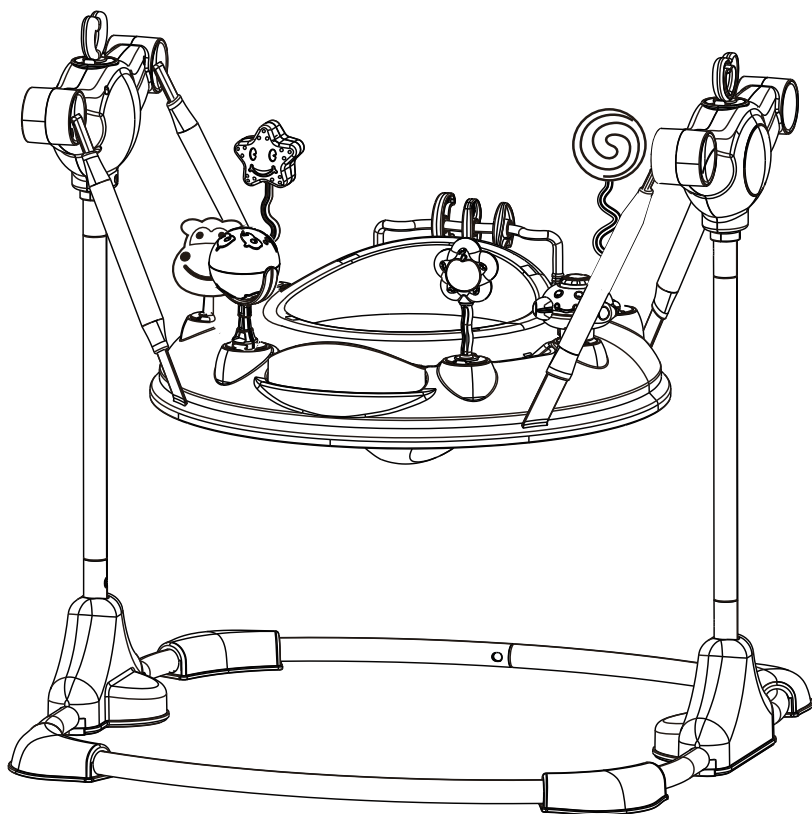
Bounce Activity Centre

Instruction Manual

6+
months

12
kg

MAXIMUM
WEIGHT
OF CHILD



Drawings in the manual are for visual purposes only. Actual product may vary slightly.
The manufacturer reserves the right to change any specification or feature without prior notice.

**IMPORTANT! PLEASE READ CAREFULLY BEFORE
ASSEMBLY AND USE.
KEEP FOR FUTURE REFERENCE.**

CAUTION:

Read these instructions carefully before assembly and use and keep for future reference. The child may be hurt if you do not follow these instructions.

WARNING:

BEFORE ASSEMBLING THIS ACTIVITY CENTRE, READ AND UNDERSTAND THE INSTRUCTIONS.

Fall hazard; child's activity may move activity centre. Use only on floor.

To avoid tip over, place product on a flat, level surface.

Never use this product on an elevated surface, eg. A table.

Strangulation hazard; strings can cause strangulation!

Do not place items with a string around child's neck, such as hood strings or pacifier cords.

Do not suspend strings over product or attach strings to toys.

Possible entanglement or strangulation injury when toys are attached to activity centre.

Do not tie together with other toys.

Remove all packaging and fasteners before use.

Begin using the product when the child can hold their head up unassisted (from approximately 6 + months and a maximum weight of 12 kg or a maximum height of 81cm, whichever comes first).

Discontinue using the product as a stationary activity centre when the child begins to walk unassisted.

Never leave the child unattended.

Always keep child in view while in product.

Never use near stairs.

Do not let children play with this product.

Do not move or lift this product with the baby inside it.

Do not use if any components are broken or missing.

Do not use the activity centre as a swing.

Do not allow other children to play near the activity centre.

KEEP INSTRUCTIONS IN A SAFE PLACE FOR FUTURE REFERENCE.

KEEP PLASTIC BAG AWAY FROM CHILDREN TO AVOID SUFFOCATION.

WARNING STAIR HAZARD:

- Ensure all the locking equipment is installed well before using the activity centre.
- DO NOT use the activity centre on a rough surface to avoid any injury to the infant.
- DISCONTINUE USE of activity centre when the child begins to walk unassisted or meets the age range suitability statement above.
- This activity centre does not replace a cot or a bed. Should your child need to sleep, then it should be placed in a suitable cot or bed.
- A time limit of 20 minutes per use is recommended for the child to be in the activity centre.
- DO NOT use accessories or replacement parts other than those approved by the manufacturer.

Battery Safety Information

In exceptional circumstances, batteries leak fluids that can cause a chemical burn injury or ruin your product. To avoid leakage:

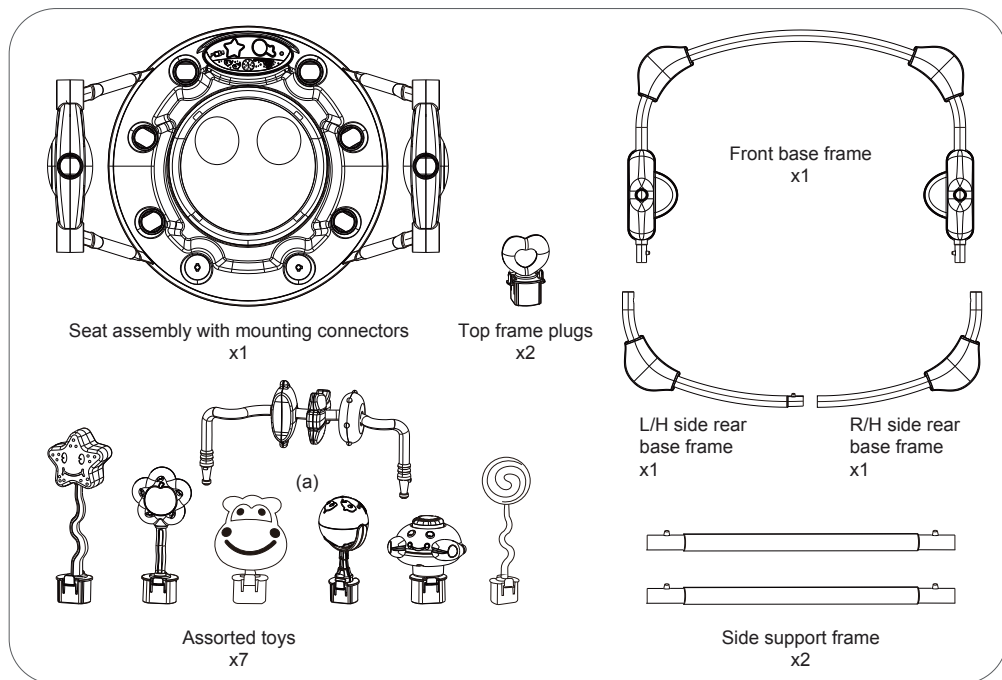
- DO NOT mix old and new batteries or batteries of different types: alkaline, standard (carbon zinc) or rechargeable (nickle-cadmium).
- Insert batteries as indicated inside the battery compartment.
- Remove batteries during long periods of non-use.
- ALWAYS remove exhausted batteries from the product.
- Dispose of batteries safely.
- DO NOT dispose of this product in a fire. The batteries inside may explode or leak.
- Never short-circuit the battery terminals.
- Use only batteries of the same equivalent type and polarity, as recommended.
- DO NOT charge non-rechargeable batteries.
- Remove rechargeable batteries from the product before charging.
- If removable rechargeable batteries are used, they are only to be charged under adult supervision.

CARE AND MAINTENANCE:

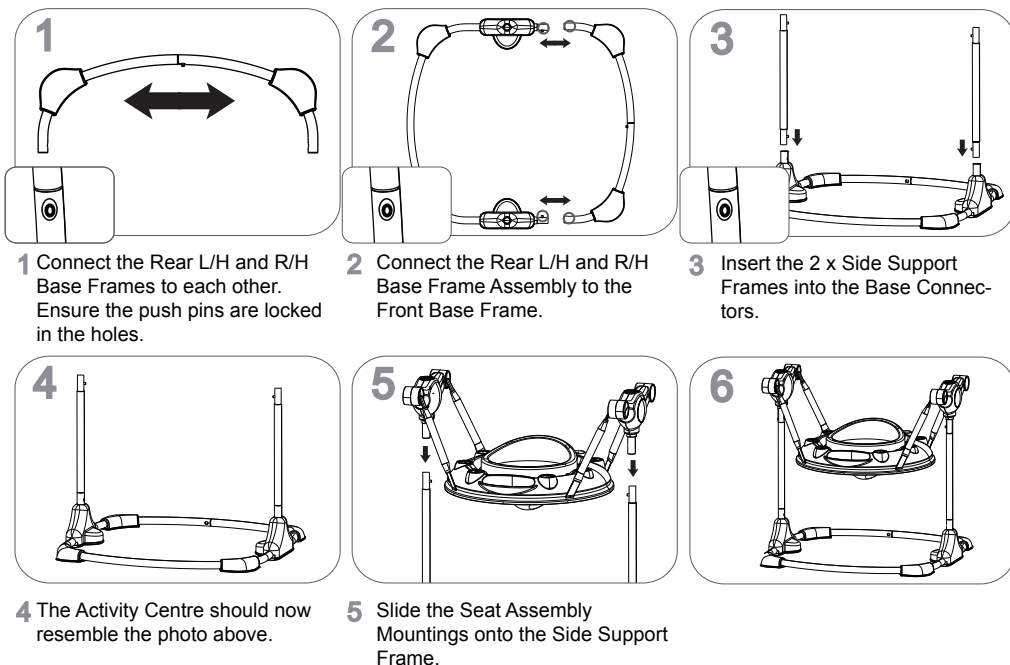
- All assembly fittings are to be properly tightened. Inspect regularly and re-tighten as necessary.
- To clean the seat pad, removable and non-removable fabric covers may be hand washed or spot cleaned. Use mild soap or upholstery shampoo. Wash separately. Do not bleach. Dry in shade thoroughly before reuse and storage and avoid direct heat and sunlight. Do not iron. Do not dry clean. ✕
- To clean the Activity Centre, wipe with a damp cloth and dry immediately with a soft clean cloth. Do not use abrasive pads, bleach or strong household cleaners. Damage may result.

Read these instructions carefully before use and keep for future reference. The child may be hurt if you do not follow these instructions.

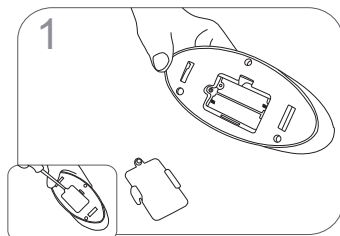
Supplied loose in box



Assemble

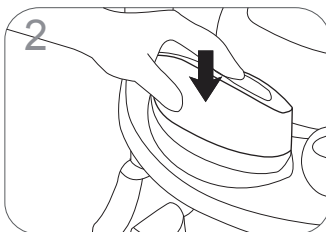


To assemble Music & Lights Module



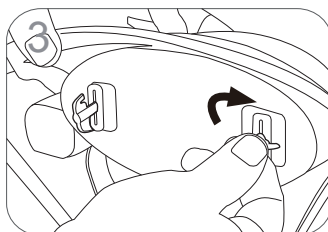
- 1 Turn Music and Lights Module over and unscrew the battery cover. Insert 2 x AA batteries (sold separately). Replace battery cover by screwing back into place.

IMPORTANT! Please note that a screwdriver (not included) is required to access the Battery Compartment to insert 2 x AA Batteries (sold separately).



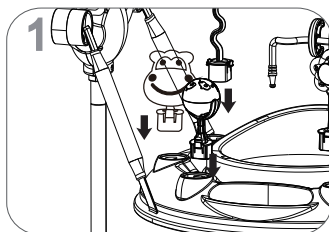
- 2 Position the rear side of the Music and Lights Module into the Main Frame. Push the front side of the Music and Lights Module down to click into position.

PLEASE NOTE! The Music and Lights Module includes 7 melodies and a 3.5mm aux input port for musical device.

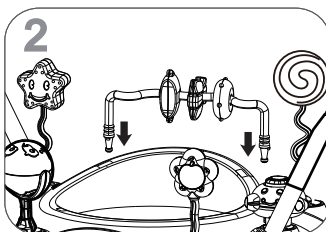


- 3 Push and twist the locking levers on the underside of the Main Frame to secure.

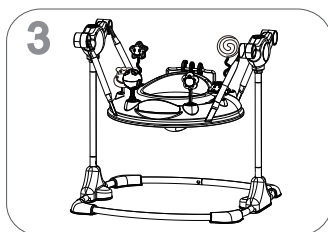
To assemble Assorted Toys



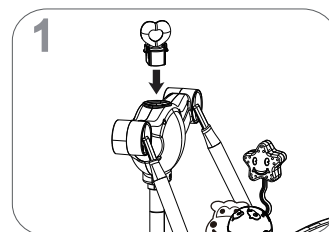
- 1 Insert the Assorted Toys into the openings in the Play Tray.



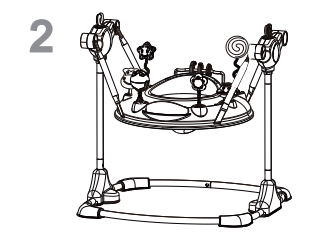
- 2 All toys are interchangeable except the long bar toy (a) which must be placed at the rear of the Play Tray.



To insert Top Frame Plugs



- 1 Insert the Top Frame Plugs into the mounting connectors.



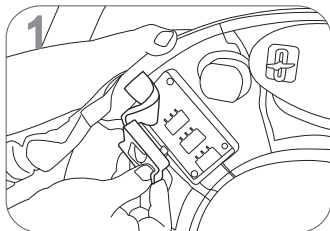
- 2 The Bounce Activity Centre is now ready for use.



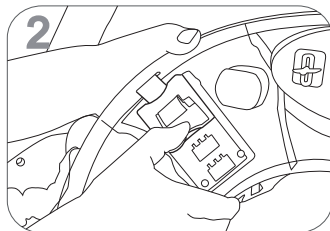
WARNING:

Do not use the top frame plugs to carry the activity centre.

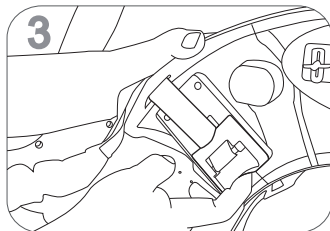
To operate Seat Height Adjustment



1 There are 3 height adjustments that are changed by altering the position of the connectors on the underside of the Play Tray.



2 To adjust, slide the plastic connector towards the seat to unlock. The position closest to the seat is the highest setting.



3 Reconnect by pushing the connector in and sliding it outwards to lock.

THIS PAGE HAS BEEN PURPOSEFULLY LEFT BLANK

KEYCODE: K: 43-517-374 | T: 70-603-095

© KMART AUSTRALIA LIMITED

FOR AU / NZ: IMPORTED FOR KMART STORES
IN AUSTRALIA AND NEW ZEALAND.

KMART AUSTRALIA - 690 SPRINGVALE ROAD,
MULGRAVE, VIC 3170, AUSTRALIA

KMART NEW ZEALAND - REGIONAL OFFICE C/O
KMART PAPATOETOE STORE, HUNTERS
PLAZA, GREAT SOUTH ROAD, PAPATOETOE,
AUCKLAND, NEW ZEALAND

MADE IN CHINA

CUSTOMER SERVICE:

KMART AU: 1800 124 125

KMART NZ: 0800 945 995

TARGET AU: 1300 753 567