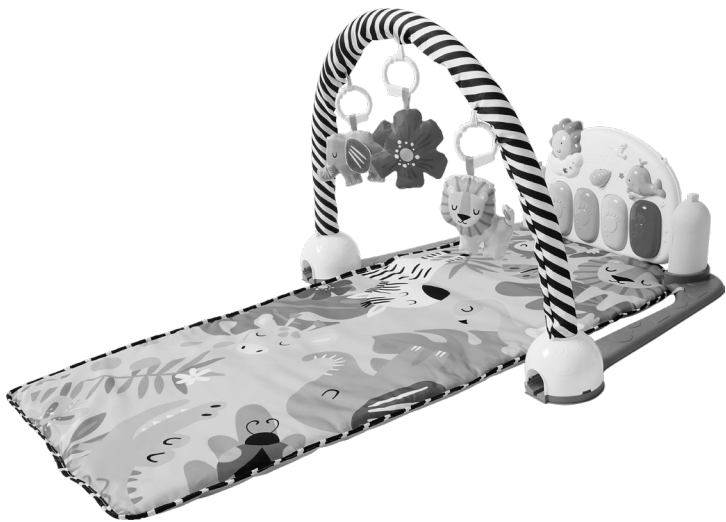


Piano Play Mat & Gym Instruction Manual

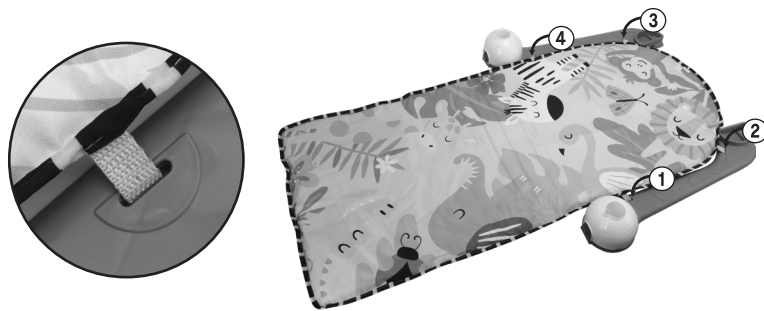
3+
months



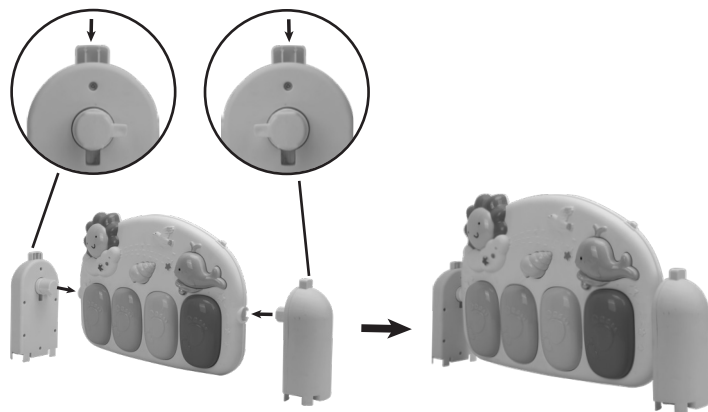
THE ILLUSTRATIONS SHOWN IN THIS MANUAL ARE FOR REFERENCE ONLY. THE MANUFACTURER RESERVES THE RIGHT TO CHANGE ANY SPECIFICATION OR FEATURE WITHOUT FURTHER NOTICE. PLEASE READ CAREFULLY BEFORE USE AND KEEP FOR FUTURE REFERENCE.

Lay and Play

1. Place the play mat flat on the floor. Place the 2 base boards on each side of the play mat. Thread 1 of the straps through the matching hole on the base board. Repeat for the 3 remaining holes. See below image:

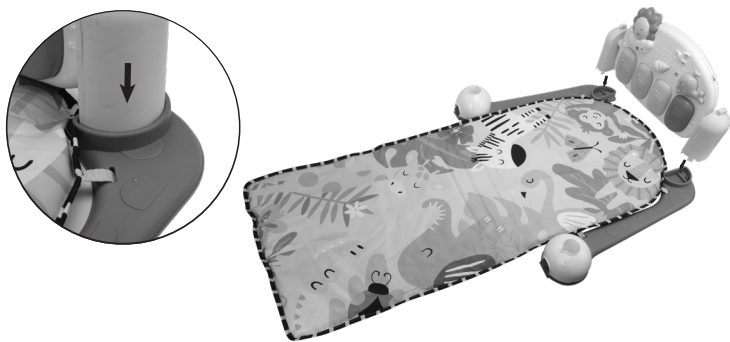


2. Insert the piano support bars into the piano and press the button at the top of each support bar to lock the piano in place. Ensure the direction of the support bars are inserted correctly. See below image:

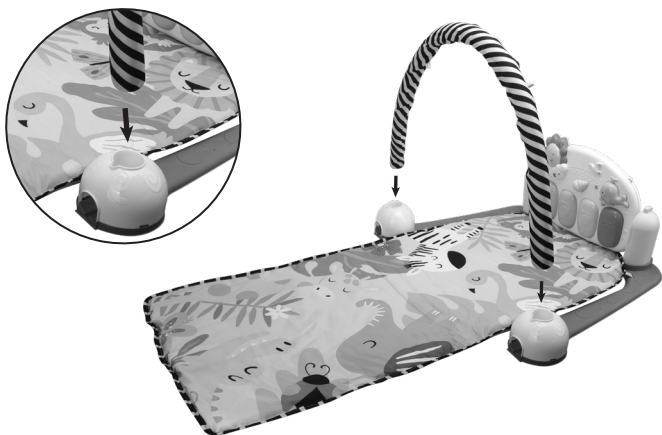


2

3. Insert the assembled piano unit into the base boards. Ensure that it is firmly secured with a "click" sound. See below image:

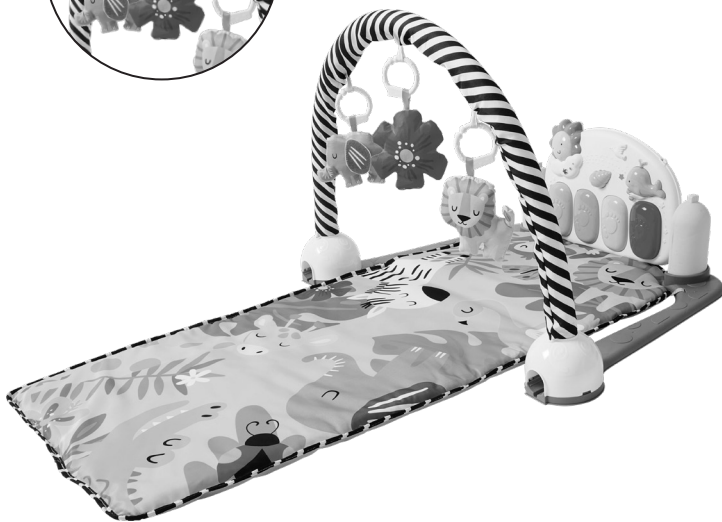
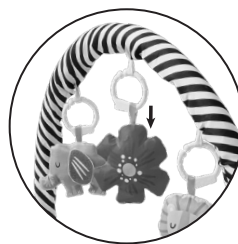


4. Insert the arch bar into the base boards. Ensure the arch bar is firmly secured. See below image:



3

5. Insert the hanging toys into the loops of the arch bar. See below image:



4

Tummy Time

Place the play mat on the floor with base boards and insert the piano as per previous instructions. Remove the ring from toys and place the toys on the play mat. See below image:



5

Warning!

- › To prevent entanglement injury, never place the play mat in a crib or playpen. Use only on a flat, level floor. Do not use on any elevated surfaces.
Never add strings, ties, straps or other products to the play mat.
- › To ensure your child's safety, this product must be assembled by an adult.
- › This toy produces flashes that may trigger epilepsy in sensitised individuals.
- › Adult supervision is required at all times. This product is intended for use by infants and toddlers under the direct supervision of a responsible adult.
- › Do not leave your child unattended while using the play mat or gym.
- › Keep the play area clear of hard objects, cords, or small items that may present choking or entanglement hazards.
- › Place the play mat on a flat, stable surface away from stairs, furniture edges, or sharp corners.
- › Regularly inspect the piano mat, arch, hanging toys, and fasteners for any signs of wear, damage, or loose parts. Discontinue use if any part is broken or damaged. This product is intended for indoor use only.
- › Do not place this product near open flames, heaters, or other heat sources.
- › This product is not intended for sleep or unsupervised rest. Remove your child from the mat if they fall asleep.

Important!

- › To ensure your child's safety, please follow the instructions below carefully and ensure the final assembly is correct. Check frequently.
- › Adult supervision required.
- › Inspect the product regularly for wear, loose parts, or damage. Discontinue use if any part appears unsafe.
- › Never leave a baby unattended on the play mat.
- › Babies should not be allowed to sleep unsupervised while laying on this play mat.
- › Do not lift or attempt to move the play mat with baby on it.
- › Do not use this play mat as a blanket.
- › Use this product only on a flat, level floor.
- › Never use on any elevated surfaces.
- › Keep away from fire and strong heat sources.
- › Air dry only.

This sheet contains important information.
Please keep the instruction manual for future reference.

K: 43-491-186 | T: 70-266-986

MADE IN CHINA

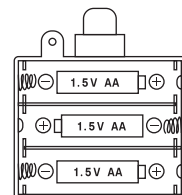
CUSTOMER SERVICE:

KMART AU: 1800 124 125
KMART NZ: 0800 945 995
TARGET AU: 1300 753 567

7

Battery installation and replacement:

- › Requires 3 x 1.5V AA batteries (not included).
- › Switch off the power of the unit.
- › Loosen the screw to open the battery compartment door.
- › Insert/Replace the new batteries in the proper direction indicated on the product.
- › Close the compartment and screw shut securely.



Battery notice

- › Batteries are to be inserted with the correct polarity. Ensure batteries are installed correctly (if applicable) and that the battery compartment is securely closed. Keep batteries out of reach of children.
- › Do not mix different types of batteries or new and used batteries.
- › Non-rechargeable batteries are not to be recharged.
- › Rechargeable batteries are only to be charged under adult supervision.
- › Rechargeable batteries are to be removed from the toy before being charged.
- › The supply terminals are not to be short-circuited.
- › Remove batteries from the toy when not in use for extended time or when batteries become exhausted.
- › Dispose of batteries responsibly.
- › Do not dispose of in fire.
- › Batteries must be installed and replaced by an adult.

Care and maintenance

- › Keep the toy out of direct sunlight and away from any direct heat source.
- › If the toy suddenly stops working or the sound seems weak, the problem may be low battery power. If this is the case, install a new set of batteries before use.
- › Surface wash with a clean, slightly damp cloth. Do not immerse in water. Do not clean or allow to come into contact with solvents, harsh chemicals or hot liquids. Damage may result. Air dry.
- › Once dried thoroughly, place in a safe, dry place, away from heat sources, sharp objects, or damp conditions that could compromise safety or functionality.

Images/Drawings in the manual are for visual purposes only. Actual product may vary slightly.

6

THIS PAGE HAS BEEN PURPOSELY LEFT BLANK.