



**Mini Frypan**

**AK-B059**

**User Manual**



**PLEASE READ AND SAVE THESE  
INSTRUCTIONS FOR FUTURE REFERENCE**

## IMPORTANT SAFEGUARD


When using any electrical product, always follow these basic safety precautions:



### **READ ALL INSTRUCTIONS BEFORE USE.**

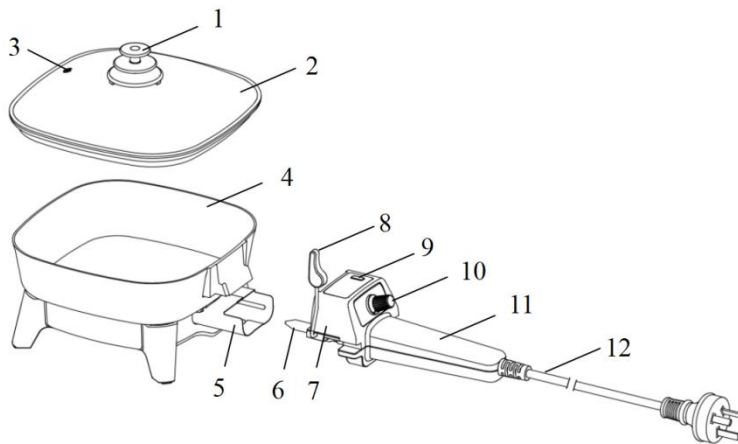
Read and understand all instructions before using this product and follow all warnings and cautions in the manual.

1. This appliance is intended for household use only and not for commercial or industrial use.
2. Only use the appliance on a clean, dry and flat surface.
3. Do Not operate this appliance underneath or near flammable or combustible materials such as curtains.
4. Caution should be taken when handling a hot appliance, as it can cause serious burns. Also be careful when removing the lid while cooking as steam can escape and cause burns.
5. The appliance is intended to be used in household and similar applications such as:
  - staff kitchen areas in shops, offices and other working environments
  - farmhouses,
  - by clients in hotels, motels and other residential type environments.
  - bed and breakfast type environments.
6. Use only accessories recommended or supplied by dealer. The use of accessories not intended for use with this appliance may cause injuries to the user or damage the appliance.
7. Keep this appliance out of reach of children.
8. Ensure the appliance is connected to a power point with an earth contact. If you are unsure, check with a qualified electrician.
9. Do not remove plug from power outlet by pulling the power cord, always grip the plug.
10. If the appliance is out of order, damaged or has been dropped, seek for qualified electrical persons for repair.
11. If the supply cord is damaged, it must be replaced by a qualified electrical person in order to avoid a hazard.
12. Any type of servicing, apart from standard cleaning, must be carried out by qualified electrical person only. There are no user serviceable parts in this appliance.
13. Position the power cord so that it is safely out of the way and cannot be tripped over.
14. Do not allow the cord to hang over the edge of the work surface or touch heated surfaces during operation.
15. Do not twist, kink or wrap the cord around the appliance, as this may cause the insulation to weaken and split.
16. Do Not operate the appliance with a damaged cord or plug.
17. Do not touch the appliance with wet hand.
18. To protect against the risk of electric shock, do not immerse the temperature control probe, cord or plug in water or other liquids.
19. Never reach for an appliance that has fallen into water switch off the circuit breaker of your house immediately and then unplug the unit.
20. Do not move the appliance while in use or while it is hot.
21. This appliance should always be switched off before connecting or disconnecting from the mains power outlet.
22. Always disconnect the plug from power outlet before moving, cleaning or emptying of food.

23. The connector must be removed before the appliance is cleaned and the appliance inlet must be dried before the appliance is used again.
24. This appliance is not intended for use by persons (including children) with reduced physical, sensory or mental capabilities, or lack of experience and knowledge, unless they have been given supervision or instruction concerning use of the appliance by a person responsible for their safety.
25. Children should be supervised not to play with the appliance.
26. **WARNING: Keep the appliance out of reach from young children, particularly during use and when cooling down.**
27. This appliance should not be used outdoors, placed near a hot gas or electrical burner or placed in an electric oven.
28. Do not operate this appliance on the same circuit with any other high wattage appliance as this may cause an overload on the household electrical system.
29. Use only suitable utensils for non-stick plates to avoid scratching the surface.
30. Do not leave the appliance unattended when in use.
31. Take care when removing the temperature control unit as the probe may be hot.
32. Use only the temperature control probe supplied with this appliance.
33. Attach the temperature control probe to the appliance before connecting to the power outlet.
34. Disconnect the appliance from the wall socket when not in use.
35. Only the appropriate temperature controller CTW800 supplied with the appliance can be used.
36. The appliance is not intended to be operated by means of an external timer or a separate remote-control system.
37.  **CAUTION: hot surface. Take care when handling the appliance. The surfaces are liable to get hot during use.**
38. For cleaning, please refer to section "CLEANING AND STORAGE".

**SAVE THESE INSTRUCTIONS  
FOR FUTURE REFERENCE**

## KNOW YOUR MINI FRYPAN



1. Lid handle
2. Glass lid
3. Hot air/steam outlet
4. Pan
5. Temperature controller socket
6. Temperature controller probe
7. Temperature controller CTW800
8. Lever
9. Red heating indicator
10. Temperature control knob
11. Handle
12. Power plug and cord

## BEFORE FIRST USE

### IMPORTANT!

- This mini frypan is suitable for cooking. It is **NOT** suitable for baking.
- Always place and operate the appliance on a flat, solid, clean, dry and heat-resistant surface.
- Place the appliance on a heat-resistant surface only. Some kitchen bench top surfaces are sensitive to heat and may be damaged or discolour due to heat. Placing the appliance on a heat-resistant mat is recommended.

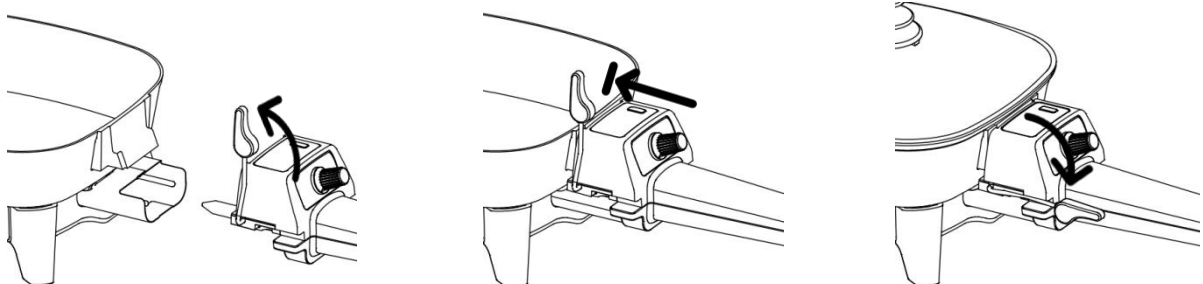
### To clean the appliance

- Unpack the appliance and check to ensure no parts are missing and the appliance is undamaged.
- Clean all parts of the appliance with a damp cloth or sponge. Wipe dry with a soft dry cloth.

**WARNING! Do not immerse the temperature control probe, cord or plug in water or any other liquid to clean.**

### To assemble the appliance

- Flip the lever up all the way.
- Put the temperature controller probe firmly into the socket of the frypan.
- Push back down the lever to lock the two parts in place.



To remove the temperature probe, perform the above in reverse order.

### **To condition the cooking surface**

- Plug the appliance into an electrical power outlet.

Note: Make sure the voltage indicated on the appliance matches the local voltage before connecting the appliance to mains power. Rated voltage: 220-240V~ 50-60Hz.

- Apply a thin coat of oil to the bottom and sides, gently rubbing it in with a paper towel. Turn the temperature controller to HIGH and allow the appliance to run for 3 minutes. Turn off the appliance and unplug the unit.

**WARNING! The frypan and lid will get very hot. Always use the lid handle on the lid when opening the lid.**

Note: On first use, there may be a small amount of haze / smoke, and an odour emitted from the appliance. This is perfectly normal and will subside after few minutes of use.

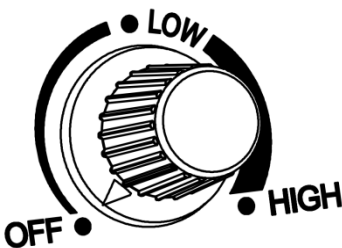
- Unplug the appliance and now it is ready for use.

## **HOW TO USE YOUR MINI FRYPAN**

1. Connect the appliance into the mains power outlet. Turn the temperature controller to the desired heat setting. When the red heating indicator lights up, the appliance will start heating.

Note:

- Temperature settings reference:

	Temperature setting	Cooking surface temperature; without food (Approx. °C)
	OFF	Room temperature
	LOW	100°C
	HIGH	200°C

- If high temperatures are required for your cooking, it is best to introduce the heat slowly by preheating the pan on a medium setting for a few minutes before turning the heat up further.
2. When the heating indicator goes out, the appliance has reached the desired cooking temperature. Now you can put the food to be cooked into the frypan. The heating indicator will switch ON and OFF during the cooking process, this is normal. This indicates that the appliance is in heat cycles to keep the desired set temperature.

**NOTE: This appliance is not suitable for simmering meals cooking.**

### **CAUTION!**

**Hot surface! Care must be taken.**

**Steam and hot air may shoot out from the vent and edge of the lid during cooking.**

3. Once the cooking process has finished, turn off and disconnect the appliance from the mains power outlet socket.
4. Remove the cooked food with a silicone or wooden spatula. DO NOT use metal utensils as this would damage the non-stick cooking surface.

## CLEANING AND STORAGE

Note: Cleaning should be performed after every cooking.

1. Turn off the appliance, remove the power cord plug from main power.

**CAUTION!** The appliance got very hot during and immediately after use. Allow the appliance to cool down completely before handling, cleaning or storing.

**WARNING!**

- DO NOT put cold water into a hot pan as this may cause the body to buckle due to sudden change in temperature.
  - DO NOT immerse the temperature controller and the power plug and cord in water or any other liquids.
  - DO NOT put any part of the appliance in dishwasher.
  - DO NOT use steel wool products or scouring pads on the non-stick surface.
2. Wash the pan and the lid with warm soapy water, and rinse with clean water. To remove stubborn food residue, use a plastic mesh pad, or other available products that state they are safe to use on non-stick surfaces. Do not use metal or other abrasive cleansers.
  3. Clean the temperature controller and handle with a damp cloth.
  4. Make sure all the parts dry thoroughly before storage.

**WARNING! Do not wrap the power cord around the appliance when storing.**

5. Store the Temperature Control Probe carefully. Do not knock or drop it because the probe may be damaged. For convenient storage, load the temperature control with handle on the frypan before storage.
6. Store the appliance in a clean dry location and out of the reach of children.

## TECHNICAL SPECIFICATIONS

Voltage: 220-240V~ 50-60Hz

Power: 450-520W

## RECIPES

### SESAME GARLIC RAMEN NOODLES

- 1 package of ramen noodles (seasoning packet discarded)
- 1 tsp. sesame oil
- 1 clove garlic, minced
- 1 tsp. soy sauce
- 1/2 tsp. brown sugar
- 1 tsp. Sriracha
- green onion, minced

Preheat the appliance.

Cook ramen noodles (without seasoning packet) in the pan. Drain and set aside.

Heat sesame oil in the pan, add garlic and cook for 2 minutes, stirring constantly.

Turn off the mini frypan and whisk in the soy sauce, brown sugar and sriracha until combined.

Toss the noodles in the sauce. Garnish with green onion.

Serve immediately.

### CLASSIC OVER-EASY FRIED EGGS

- 1 tsp. unsalted butter or cooking oil
- 2 large eggs
- Salt and pepper to taste

Preheat the appliance.

Heat butter in the pan until lightly foaming, tilting the mini fry pan to evenly distribute the butter.  
Optional: heat cooking oil for 1 to 2 minutes instead of butter.

Carefully break eggs into the pan and season with salt.

Cook until the egg whites are nearly set on top, and the yolks are still runny.

Gently flip eggs with spatula, one at a time. Season with salt and cook as desired.

Transfer eggs to a plate, season with pepper.

Serve immediately.

## 12 Month Warranty

Thank you for your purchase.

Your new product is warrantied to be free from defects in materials and workmanship for the period stated above, from the date of purchase, provided that the product is used in accordance with accompanying recommendations or instructions where provided. This warranty is in addition to your rights under the Australian Consumer Law.

For New Zealand customers, this warranty is in addition to statutory rights observed under New Zealand legislation.

We will provide you with your choice of a refund, repair (where possible) or exchange (availability dependent) for this product if it becomes defective within the warranty period. The business will bear the reasonable expense of claiming the warranty.

This warranty will no longer apply where the defect is a result of alteration, accident, misuse, abuse or neglect.

Please retain your receipt as proof of purchase and contact our Customer Service Centre as listed below, for the entity you purchased this product from, for any difficulties with your product. Warranty claims and claims for expense incurred in returning this product can be addressed to the respective Customer Service Centre.

Our goods come with guarantees that cannot be excluded under the Australian Consumer Law. You are entitled to a replacement or refund for a major failure and compensation for any other reasonably foreseeable loss or damage. You are also entitled to have the goods repaired or replaced if the goods fail to be of acceptable quality and the failure does not amount to a major failure.

Contact for Kmart purchases	Contact for Target purchases
Kmart Australia Ltd. C/- Customer Service Centre 690 Springvale Road, Mulgrave Vic 3170 Customer Service: 1800 124 125 (Australia) or 0800 945 995 (New Zealand) or via Customer Help at <a href="http://kmart.com.au">kmart.com.au</a>	Target Australia Pty Ltd C/- Customer Service Centre 2 Kendall Street, Williams Landing, Vic, 3027 Customer Service: 1300 753 567 or via Customer Help at <a href="http://target.com.au/help/contact-us">target.com.au/help/contact-us</a>