

KMT说明书 折页 128g双铜 尺寸: 89*127mm

anko

K: 43-357-871 | T: 68-815-493
Model No.: 43233892

TWS Earphone Operating instructions

Includes:

- TWS earphone
- Charging cable



12 month warranty

Thank you for your purchase.

Your new product is warranted to be free from defects in materials and workmanship for the period stated above, from the date of purchase, provided that the product is used in accordance with accompanying recommendations or instructions where provided. This warranty is in addition to your rights under the Australian Consumer Law. For New Zealand customers, this warranty is in addition to statutory rights observed under New Zealand legislation.

We will provide you with your choice of a refund, repair (where possible) or exchange (availability dependent) for this product if it becomes defective within the warranty period. The business will bear the reasonable expense of claiming the warranty. This warranty will no longer apply where the defect is a result of alteration, accident, misuse, abuse or neglect.

Please retain your receipt as proof of purchase and contact our Customer Service Centre as listed below, for the entity you purchased this product from, for any difficulties with your product. Warranty claims and claims for expense incurred in returning this product can be addressed to the respective Customer Service Centre.

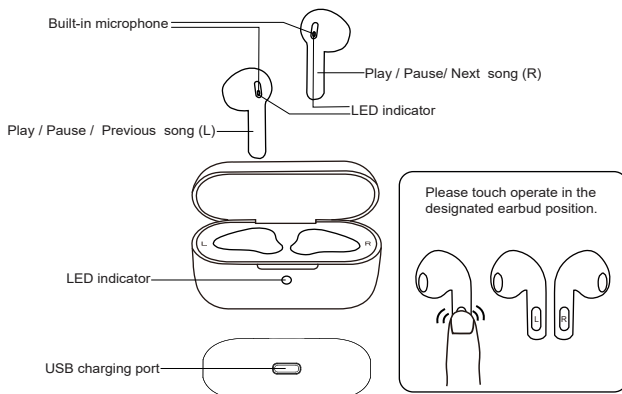
Our goods come with guarantees that cannot be excluded under the Australian Consumer Law. You are entitled to a replacement or refund for a major failure and compensation for any other reasonably foreseeable loss or damage. You are also entitled to have the goods repaired or replaced if the goods fail to be of acceptable quality and the failure does not amount to a major failure.

Contact for Kmart purchases	Contact for Target purchases
Kmart Australia Ltd. C/- Customer Service Centre 690 Springvale Road, Mulgrave Vic 3170 Customer Service: 1800 124 125 (Australia) or 0800 945 995 (New Zealand) or via Customer Help at kmart.com.au	Target Australia Pty Ltd C/- Customer Service Centre 2 Kendall Street, Williams Landing, Vic, 3027 Customer Service: 1300 753 567 or via Customer Help at target.com.au/help/contact-us

WARNING:

- Battery cannot be subjected to high or low extreme temperatures, low air pressure at high altitude during use, storage or transportation.
- Replacement of a battery with an incorrect type that can result in an explosion or the leakage of flammable liquid or gas.
- Disposal of a battery into fire or a hot oven, or mechanically crushing or cutting of a battery, that can result in an explosion.
- Leaving a battery in an extremely high temperature surrounding environment that can result in an explosion or the leakage of flammable liquid or gas.
- A battery subjected to extremely low air pressure that may result in an explosion or the leakage of flammable liquid or gas.
- This product shall not be connected to power supply source exceeding PS1. Rated 5V d.c. 1A.
- Marking information is located at bottom of the unit.
- Please note the product working temperature is: 0-40 °C.
- This TWS earphones shall be charged by the supplied charging unit only.

Function overview:



How to use these earphones: Specifications:

K: 43-357-871 | T: 68-815-493

Model: 43233892

Bluetooth Version: V5.3

Function Operation

Play / Pause : Touch either earbud

Siri : Long Touch either Left or Right earbud

Previous : Touch the Left earbud twice quickly

Next : Touch the Right earbud twice quickly

Volume up : Triple-Touch Right earbud

Volume down : Triple-Touch Left earbud

Power ON / OFF

Power ON :

Removing Earphones from charging case will automatically turn them on

Power OFF :

Placing Earphones into charging case will automatically turn them off

Pairing the Earphones with Bluetooth® devices

- Go to Bluetooth Settings on your Bluetooth device (phone, tablet, etc.)
- Turn the Bluetooth ON on your device

• Open the charging case and remove the Earphones, they will automatically turn on (or can be turned on manually). The LED indicators on the left and right Earphones will flash blue and red as they automatically sync to each other. Once synced the Earphones will enter pairing mode, which is identifiable by one Earphone slowly flashing Blue while the other continues to flash Blue and Red.

On your Bluetooth Device, select the pairing name of your Earphones on the list of available devices. Pairing name is: anko43357871

The Earphone LED indicator will turn off blue once connected (Trouble shooting tip: if the Earphones do not connect to your device, turn the Earphones OFF, turn your device's Bluetooth OFF and then back ON, then repeat the pairing process).

Your Earphones are designed to automatically sync to each other when turned ON, however if they ever fail to sync, please follow the below instructions to re-sync the left and right Earphone

- Remove the Earphones from the charging case, ensuring both Earphones are turned ON
- Touch both right and left Earphone in touch area in 5 quick successions to re-sync the earphone, a prompt voice alert then earphone turn off, please repeat the above pairing process.

- In some cases if needed to cancel the connection of left & right earbud, touch the L & R earbud 5 time in quick successions when they're not connected with any devices (phone, tablet, etc.)

Phone calls

- When there is an incoming call, the unit will pause the playback and ring to alert you of the call. To answer the call, click the earphone. To end a call, click the earphone again. To decline an incoming call, press and hold either earbud for 2 seconds.

Playing music

- Click either the left or right earphone once to pause playback, click either earphone once again to resume playback. Press the left twice to play previous track. Press the right twice to play next track.

Battery Charging

- Connect the USB-C charging cable into the socket on the charging case.

- Plug the cable into a standard USB 5V power output.
- The LED indicator will flash Red while the case is charging and will turn solid red when fully charged. (Note: Before using the charging case for the first time, we recommend you fully charge the battery. A full charge takes around 2 hours).
- When fully charged, unplug the charging cable from the power socket.

Note: The charging case will stop working when the battery is low.

Charging voltage: 5V D.C

Battery capacity: 250mAh

Support profiles: A2DP, AVRCP, HFP

Working Distance: 10 meters

Music Time : 4 Hours

Talk time: 3 Hours

Standby time: 100 Hours

Earphone Charge time: 1.5 Hrs

Charging time: 1.5-2 hours

Cable length: 30 cm

Pairing window time: 10 minutes

Non-connection automatic power-off mode:

After 3 mins the earphone will automatically switch off when no connection to the device.

The Bluetooth® word mark and logos are registered trademarks owned by Bluetooth® SIG, Inc., and any use of such marks by KMART AUSTRALIA is under license.