

Mosaic Coasters Instruction Manual

Kit Includes

- › 2 x bamboo bases
- › 1 x 120g bag of glass tiles
- › 1 x bag of grout
- › 1 x plastic scraper
- › 1 x tube of glue
- › 1 x plastic bowl
- › 1 x sponge
- › 1 x wooden stick
- › 1 x instruction sheet

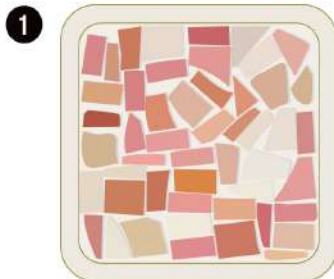


Guide Image

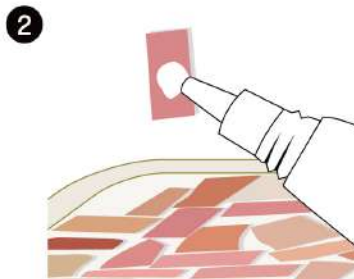
Tips

- › Clean the bamboo bases & tiles with a damp cloth before beginning.
- › Cover work area with disposable paper or mat.
- › Keep the gaps between tiles approximately 3mm or less.
- › Ensure grout is completely dry before using the coaster.

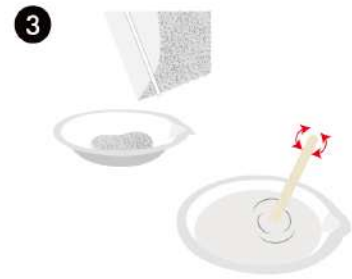
How To Make A Mosaic Coaster



Place the tiles on the bamboo base in your desired pattern, leaving small gaps between tiles.



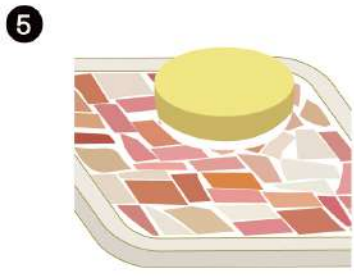
Glue each tile onto the base and allow approx. 30 minutes for the glue to dry.



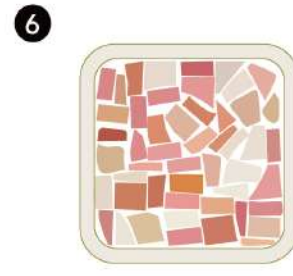
Pour the grout into the mixing bowl. Gradually add water while stirring, until it forms a paste texture. 1 bag of grout requires approx. 20ml of water.



Using the scraper, apply the grout to cover the tiles completely. Spread the grout to fill all of the gaps. Scrape off excess grout from the top of the tiles.



Wet the sponge in warm water and clean the tiles until they are clear of grout, leaving grout only in the gaps. Allow approx. 5 hours for the grout to dry.



Clean off any remaining grout to complete the coaster ready for use.

MADE IN CHINA

CUSTOMER SERVICE:

KMART AU: 1800 124 125
KMART NZ: 0800 945 995
TARGET AU: 1300 753 567

KEYCODE 43-342-648