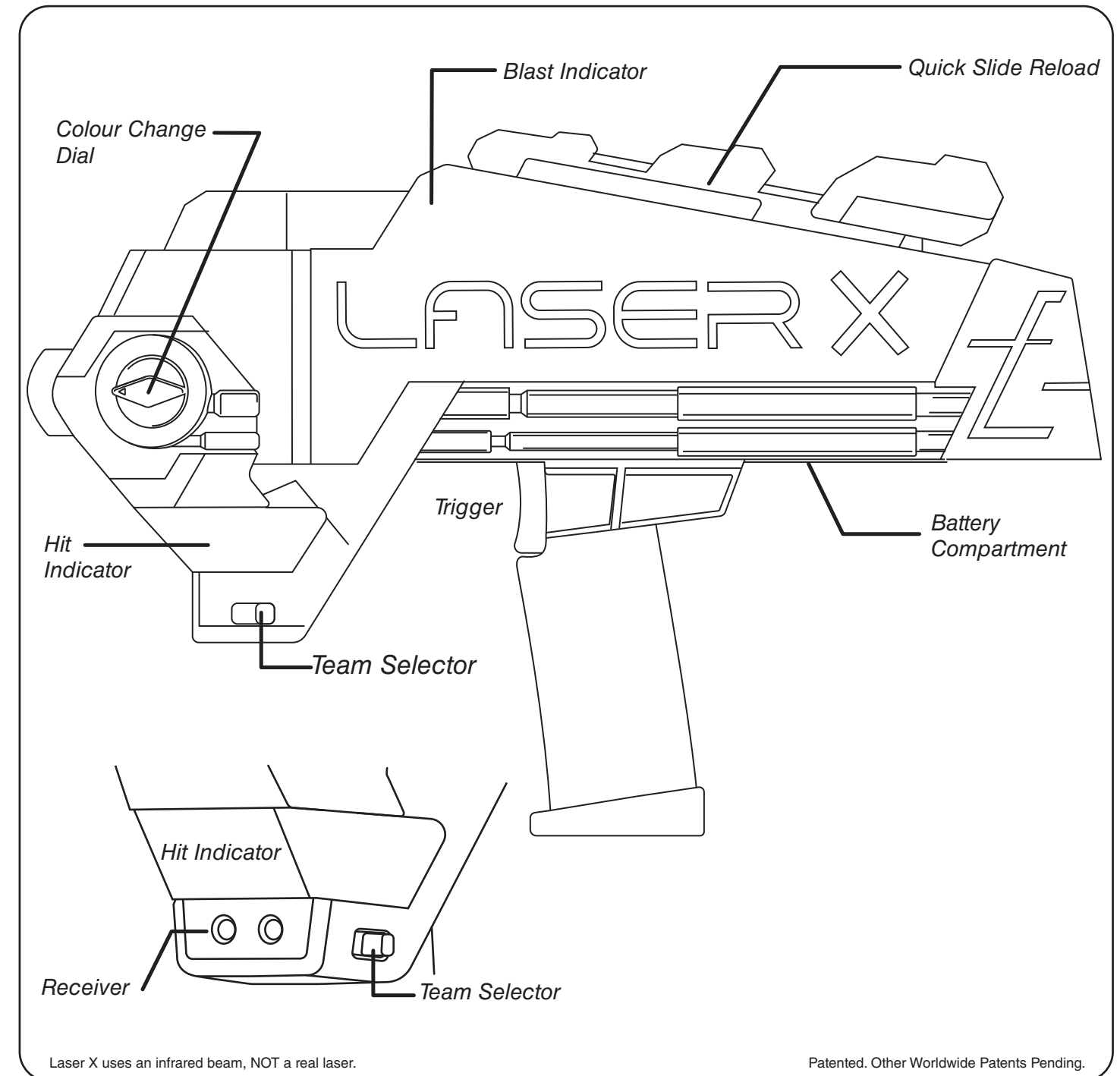


87552

Ages 6+

LASER X™ ULTRA

Double B2 Blasters



Dear Customer,
NSI International, Inc. is the manufacturer of this product. We hope you enjoy your Laser X product. If you find that we have made an error or if something is missing or damaged, let us know so that we can correct the problem for you. Please include the following:

- Name of item
- Date of purchase
- Purchase price (please include sales slip)
- Model number
- Place of purchase
- Brief description of the problem

Send all correspondence to:



HUNTER LEISURE PTY LTD
94 KEILOR PARK DRIVE
TULLAMARINE VIC 3043
AUSTRALIA
www.hunterleisure.com.au
Tel: 03 9287 9888

www.buylaserx.com.au



BATTERY SAFETY INFORMATION

- Non-rechargeable batteries are not to be recharged.
- Rechargeable batteries are to be removed from the Laser Blaster before being charged.
- Rechargeable batteries are only to be charged under adult supervision.
- Different types of batteries or new and used batteries are not to be mixed.
- Only batteries of the same or equivalent type as recommended are to be used.
- Batteries are to be inserted with the correct polarity (+ and -).
- Exhausted batteries are to be removed from the Laser Blaster.
- The supply terminals are not to be short-circuited.
- Keep instruction sheet for reference since it contains important information.
- Do not mix old and new batteries.
- Do not mix alkaline, standard (carbon-zinc) or rechargeable (nickel-cadmium) batteries.
- Alkaline Battery is Recommended.

READ THIS BEFORE YOU PLAY

Adult Supervision Required.

Ages 6+

WARNING: This toy produces flashes that may trigger epilepsy in sensitized individuals.

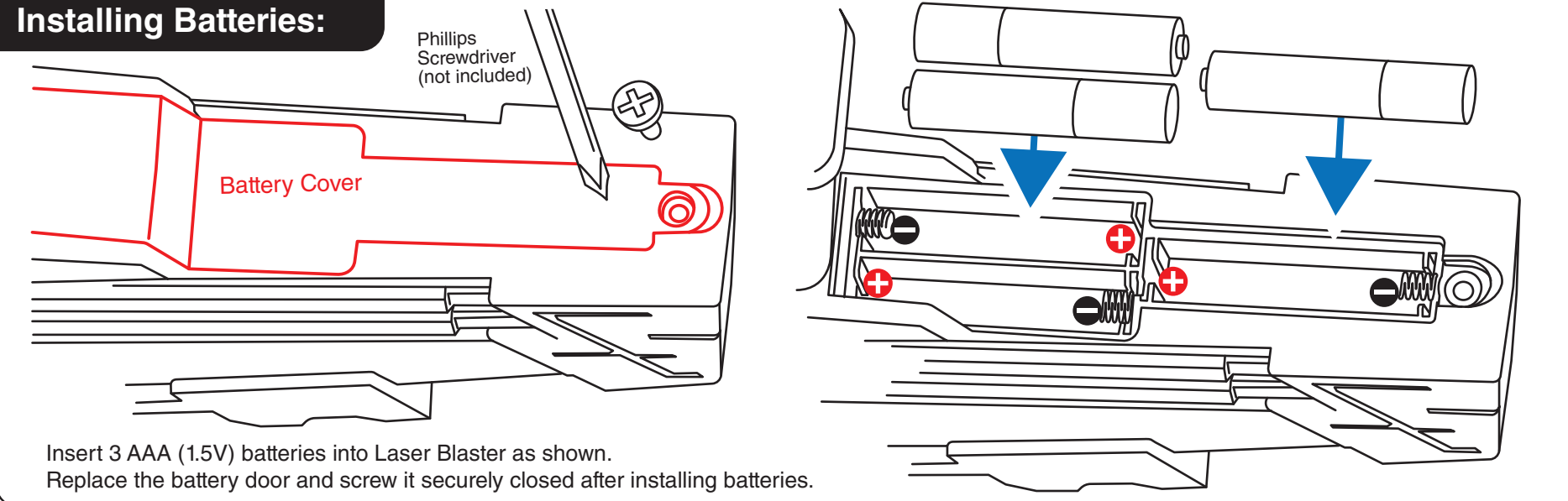


IMPORTANT! Do Not climb onto or jump from trees, playground equipment, fences, ladders or any high places when wearing Laser X Gear as it can get caught and be a strangulation or choking hazard!

Laser X is a sport and should be played with the same care as you would any other sport.

Do not play Laser X in streets, parking lots or anywhere near moving cars or other vehicles.

Installing Batteries:



Game Play:

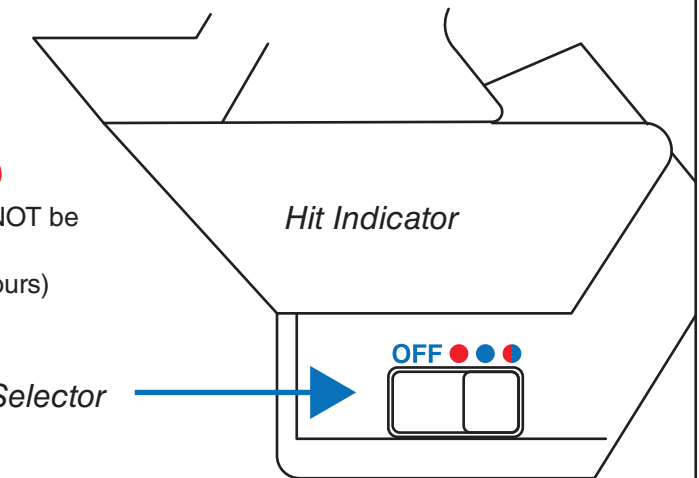
Select your team by sliding the switch to:

- can hit and be hit by ● and ●
- can hit and be hit by ● and ●

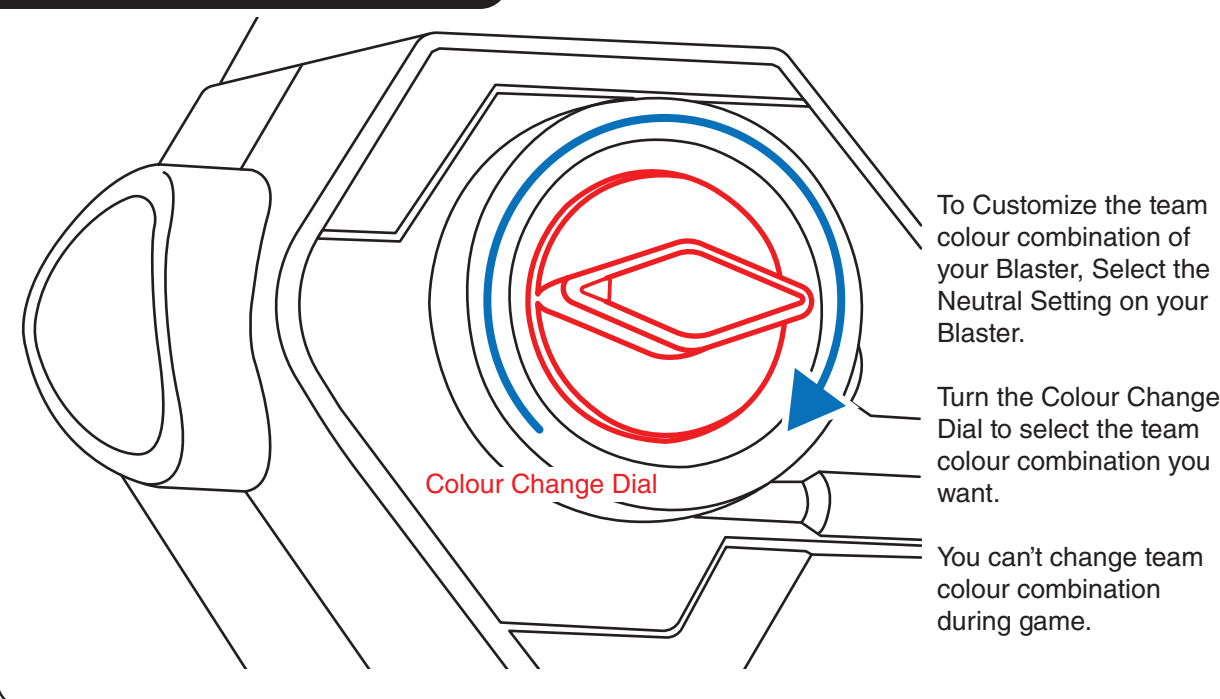
To access multi-colour teams, switch to ●●

- can hit any other team colour but can NOT be hit by their own team colour.

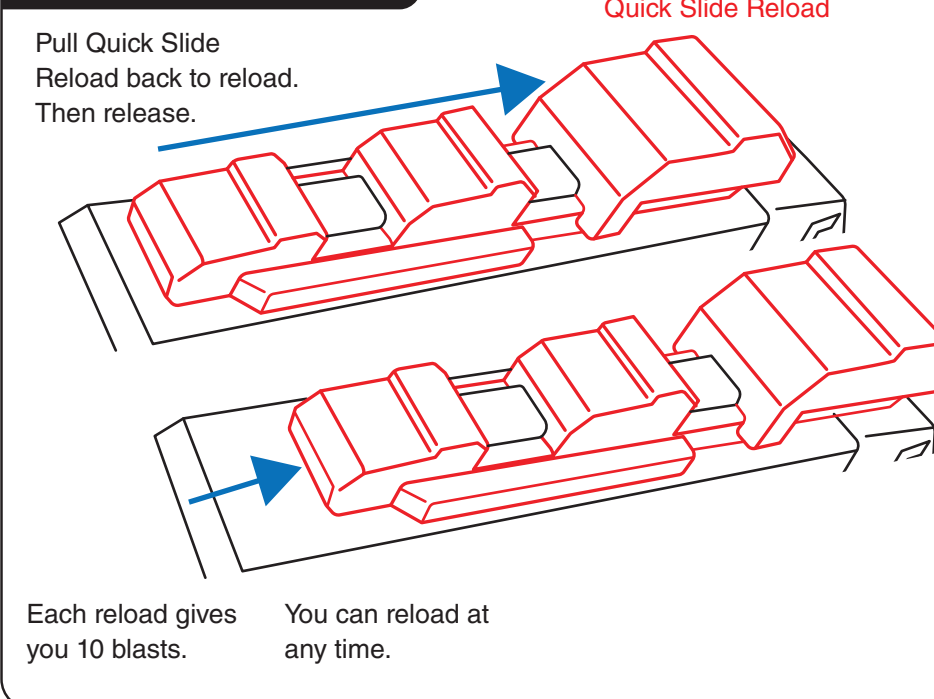
Ultra Mode (blaster cycles through ALL colours) is the first colour combination in ●● and can hit and be hit by every team including other players playing in Ultra Mode.



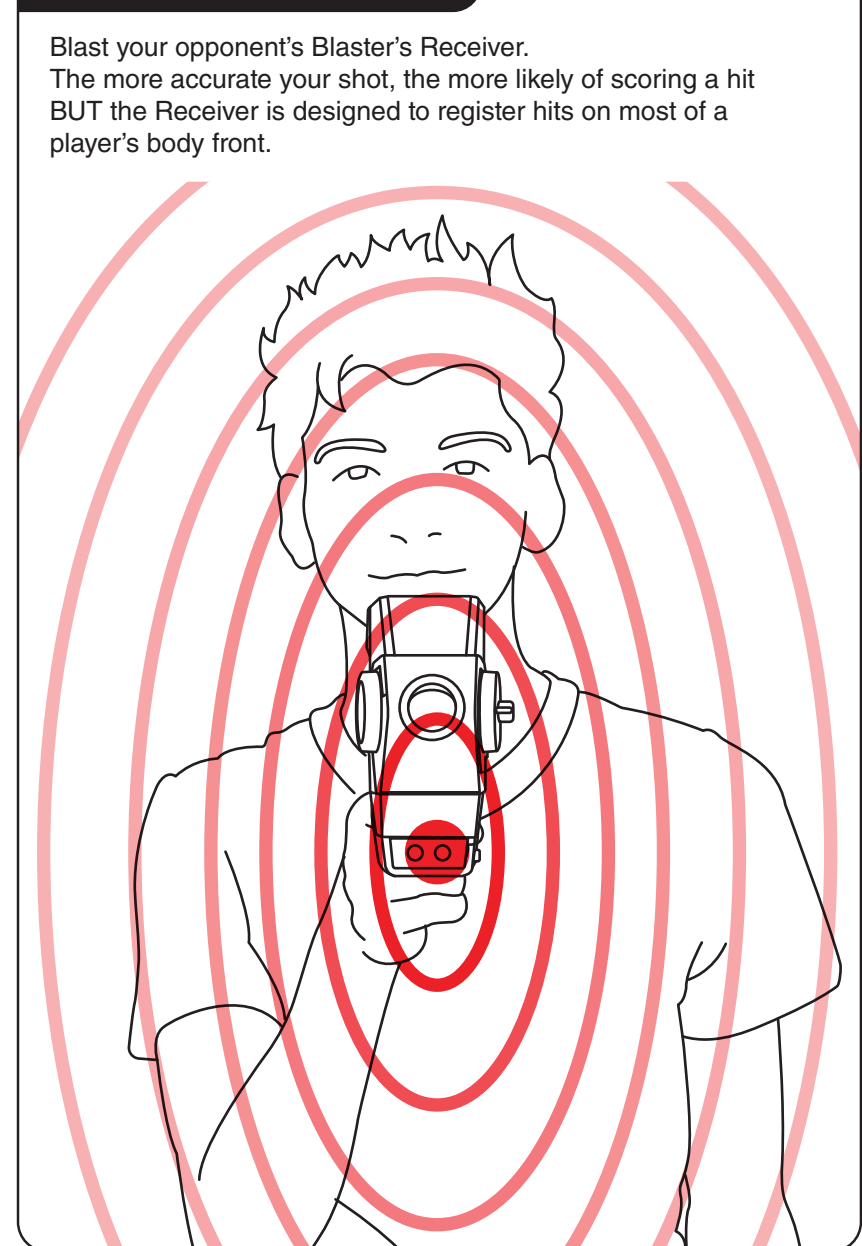
Blaster Colour Change:



Blaster Reload:



Scoring Hits:



During Game Play:

- Blasters can hit Receiver up to 90 m away.
- When hit, the Team Colour of the player that hit you will flash on your receiver and then the game life indicator will change from Green to Red.
- 8 Hits and you are out.
- For each minute you are not hit, you automatically get one hit "back"
- When you are out, you must turn your Blaster OFF and re-select your team to start a new game.

Tips:

- Very bright sunlight will decrease Laser Blast Range.
- Indoors, Laser Blaster beams can be bounced off walls and mirrors to hit your opponent.
- You can blast through windows.
- Turn your Laser X Gear to OFF when not in use. Leaving it in any of the team settings will drain batteries.
- If your Laser X Gear is not working properly, replace the batteries with BRAND NEW batteries.

Be a Good Sport:

- Don't cover your Blaster's Receiver or hide it.
- Don't reset your Blaster during play.