

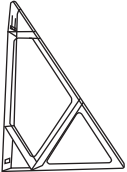
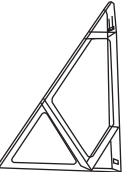
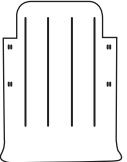
Assembly Instruction

43269945 SET OF 2 CLEAR STACKING SHOE RACKS




CARE INSTRUCTIONS: WIPE CLEAN WITH A SOFT DRY OR DAMP CLOTH. CHECK AND TIGHTEN ALL PARTS REGULARLY.

MAXIMUM LOADING WEIGHT: 1KG EACH RACK.

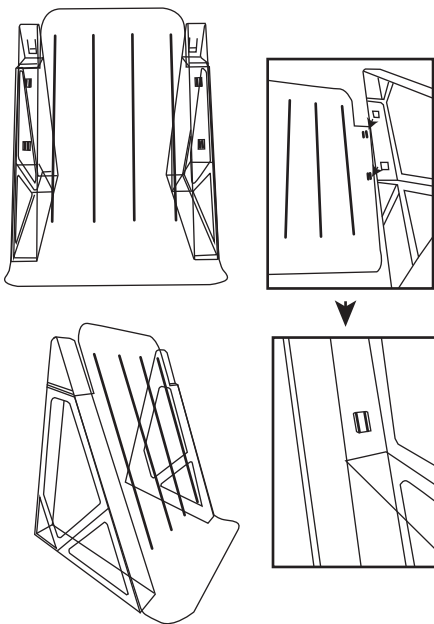
PLASTICS LIST

					
Left Rack	2 PCS	Right Rack	2 PCS	Plate	2 PCS

ACCESSORY LIST

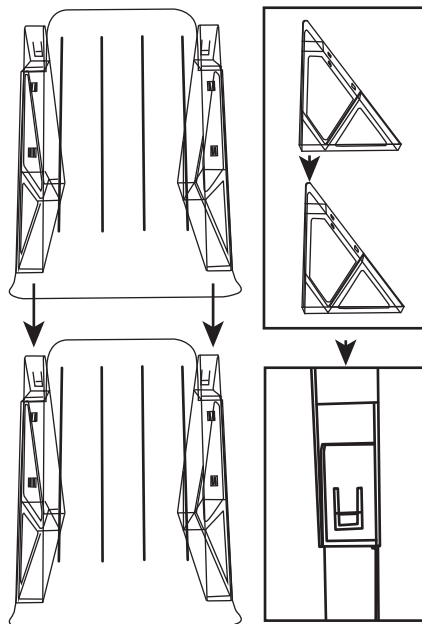
					
A Strap	1 PC	B Wall Plug	1 PC	C M5x40mm	1 PC

STEP 1



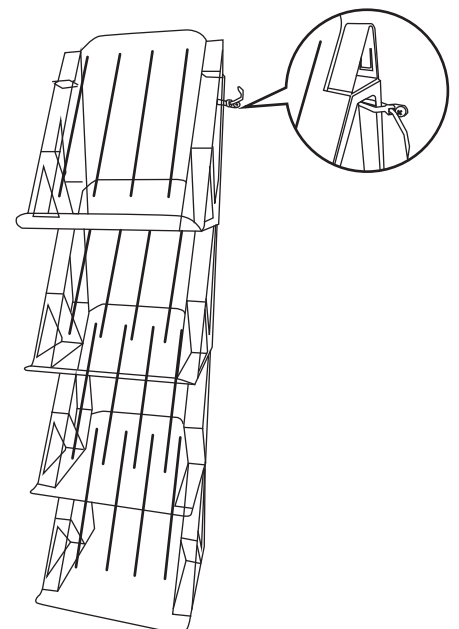
Assemble two separate rack

STEP 2



Stack two separate rack

STEP 3



Optional Stacking