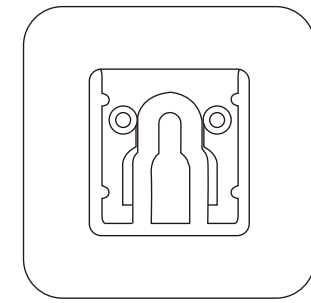


297x210mm

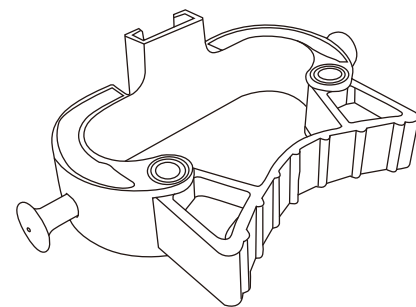
FRONT

### Assembly Instructions

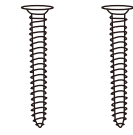
43225149 4 Pack broom holder



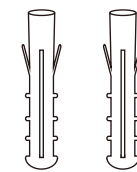
A: 1PC



B: 1PC

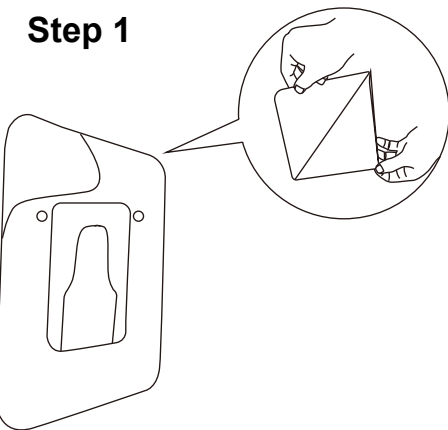


C: 2PC

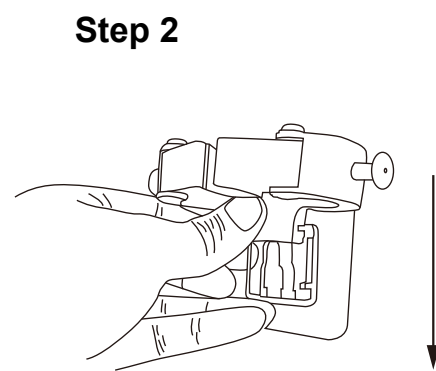


D: 2PC

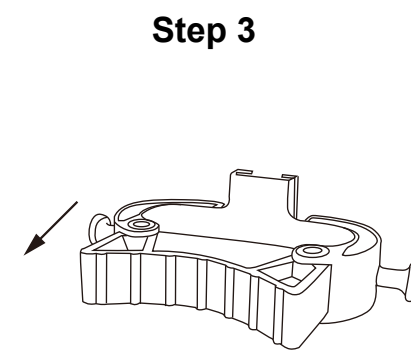
Option 1: Note that it cannot be used on painted walls



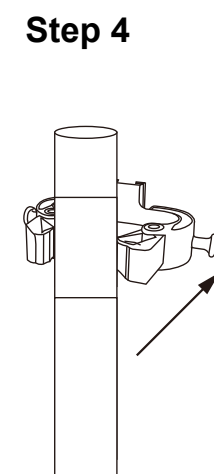
Step 1



Step 2



Step 3

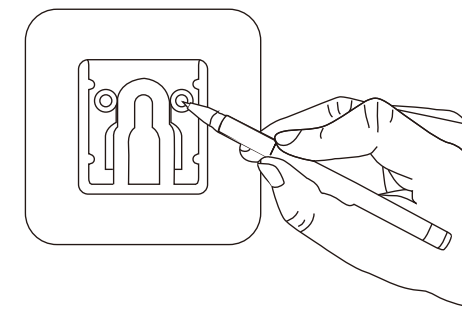


Step 4

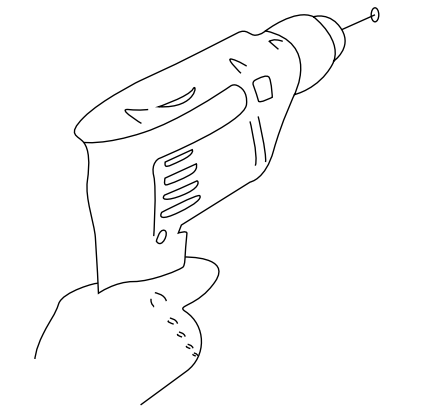
BACK

Option 2: Suitable for all walls

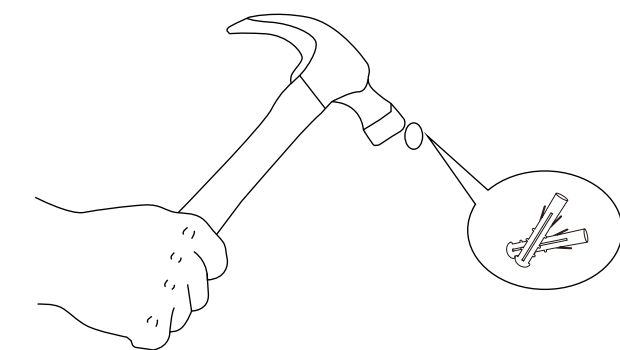
Step 1



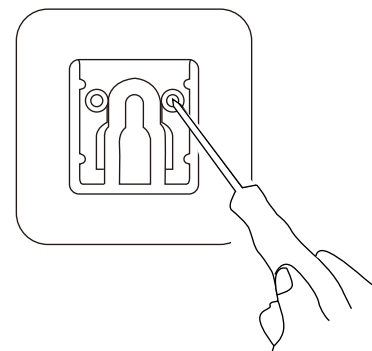
Step 2



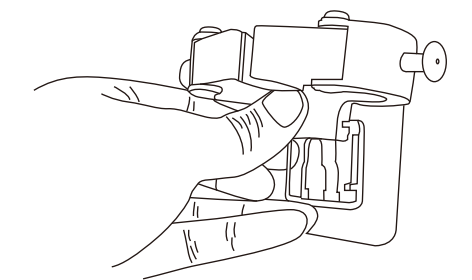
Step 3



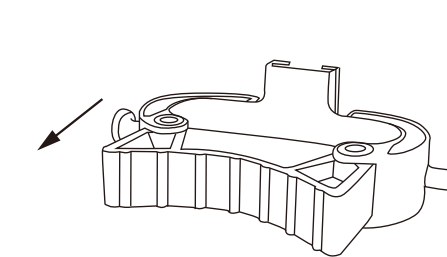
Step 4



Step 5



Step 6



Step 7

