

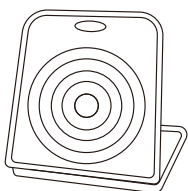
SOFT ARCHERY SET

Keycode: 43057337

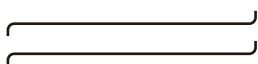
WARNING

- Adult use only. This is not a toy.
- Adult Assembly Required.
- Warning: Do not aim at people or pets.]
- Warning: Arrows are not a toy for children. Arrows can cause serious or fatal injuries. Keep out of reach of children. Do not use when any person or animal is in the vicinity of the intended flight path of the arrows or target area.
- Warning: This soft archery training set is for ages 14 years and over, under adult supervision, it is not a toy. This training set is intended to be an introduction to archery.

Part List



Target & storage box
A x 1pc



Metal connecting rod
B x 2pcs



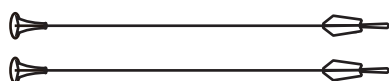
Upper bow arm
C x 1pc



Lower bow arm
D x 1pc



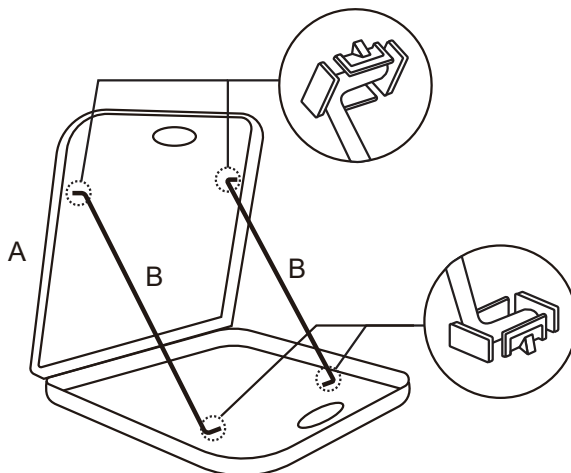
Bowstring
E x 1pc



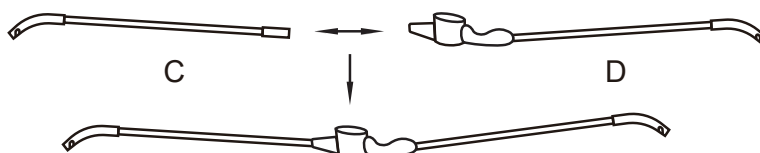
Arrow
F x 2pcs

Assembly Instruction

1. Open the lock of the target & storage box (Part A) which is located at the handle, take out all the parts, then set up the box by installing the metal connecting rods (Part B) at the two ends to the box firmly.



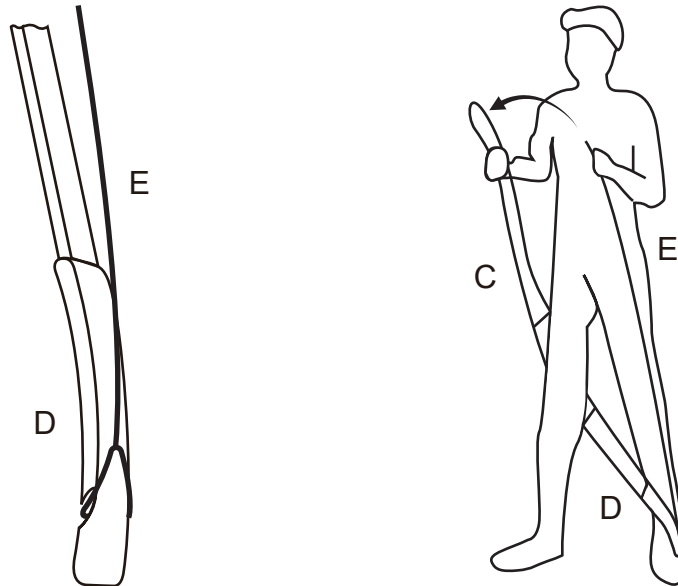
2. Insert the upper bow arm (Part C) into the lower bow arm (Part D). Ensure the two bended ends are in same direction.



SOFT ARCHERY SET

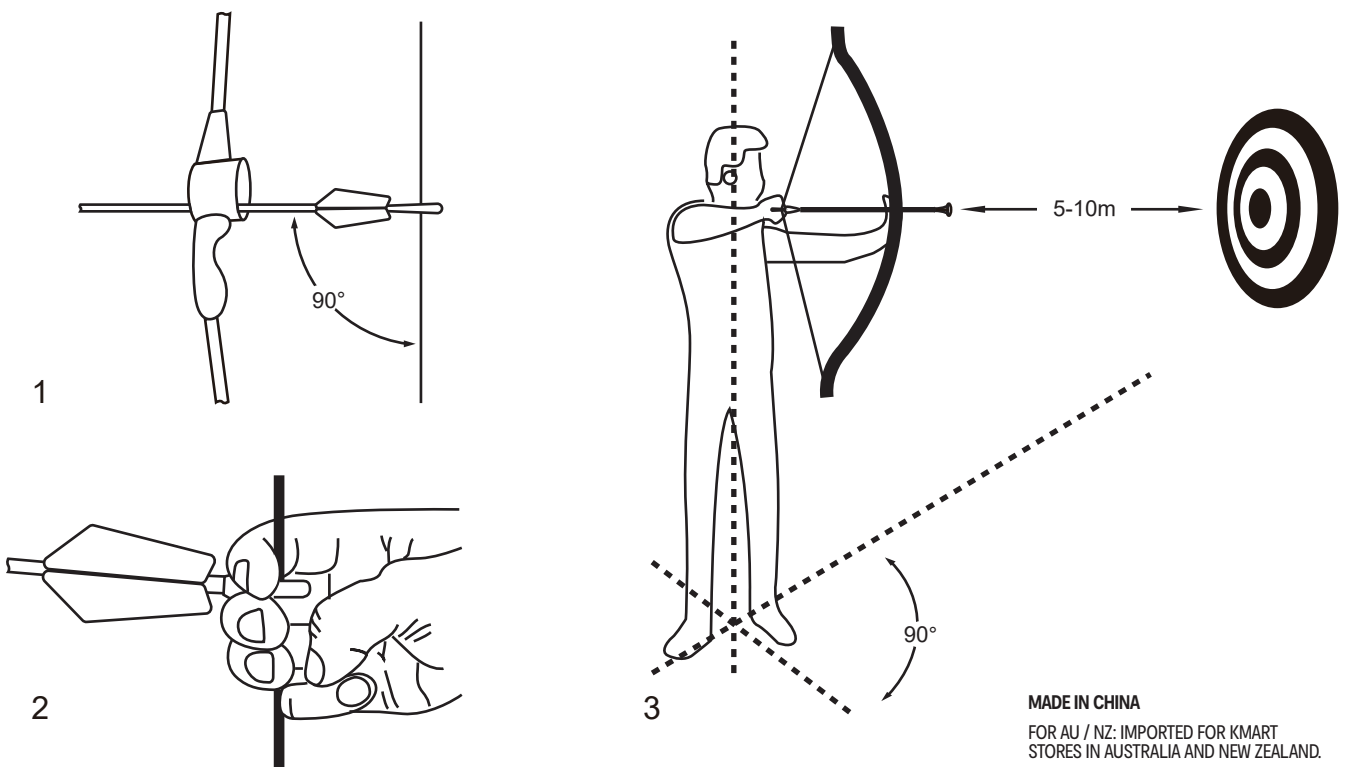
Keycode: 43057337

3. Assemble the loop of bowstring (Part E) to one end of the bow around the groove, then make the bow stand vertically (reference image). Press the upper side of the bow to ensure the other loop of bowstring is assembled into the bow.



Use Instruction

1. Keep standing facing the target board at a 90 degree angle and the distance within 5-10m while shooting.
2. Take the arrow to thread through the hole of bow, let the bowstring be nested into the groove of the arrow at the end. The angle should be at 90 degree between bowstring and arrow before stretching.
3. Hold the end of arrow firmly with finger before stretching backwards and shooting. Please reference below images.



MADE IN CHINA
FOR AU / NZ: IMPORTED FOR KMART
STORES IN AUSTRALIA AND NEW ZEALAND.