

Battery Safety Information

- In exceptional circumstances, batteries leak fluids that can cause a chemical burn injury or ruin your product. To avoid leakage:
- DO NOT mix old and new batteries or batteries of different types: alkaline, standard (carbon zinc) or rechargeable (nickle-cadmium).
 - Insert batteries as indicated inside the battery compartment.
 - Remove batteries during long periods of non-use.
 - ALWAYS remove exhausted batteries from the product.
 - Dispose of batteries safely.
 - DO NOT dispose of this product in a fire. The batteries inside may explode or leak.
 - Never short-circuit the battery terminals.
 - Use only batteries of the same equivalent type and polarity, as recommended.
 - DO NOT charge non-rechargeable batteries.
 - Remove rechargeable batteries from the product before charging.
 - If removable, rechargeable batteries are used, they are only to be charged under adult supervision.

WARNING:

Do not mix old and new batteries.
Do not mix alkaline, standard (carbon-zinc) or rechargeable (nickle-cadmium) batteries.
Adult supervision is required when charging rechargeable batteries.
Always remove flat or exhausted batteries from the toy.
Do not short-circuit the supply terminals.
Non-rechargeable batteries are not to be recharged.

CARE AND MAINTENANCE:

- All assembly fittings are to be properly tightened. Inspect regularly and re-tighten as necessary.
- To clean the seat pad, removable and non-removable fabric covers may be hand washed or spot cleaned. Use mild soap or upholstery shampoo. Wash separately. Do not bleach. Dry in shade thoroughly before re-use and avoid direct heat and sunlight. Do not iron. Do not dry clean.
- To clean the Activity Centre, wipe with a damp cloth and dry immediately with a soft clean cloth. Do not use abrasive pads, bleach or strong household cleaners. Damage may result.

CAUTION:

Read these instructions carefully before assembly and use and keep for future reference. The child may be hurt if you do not follow these instructions.

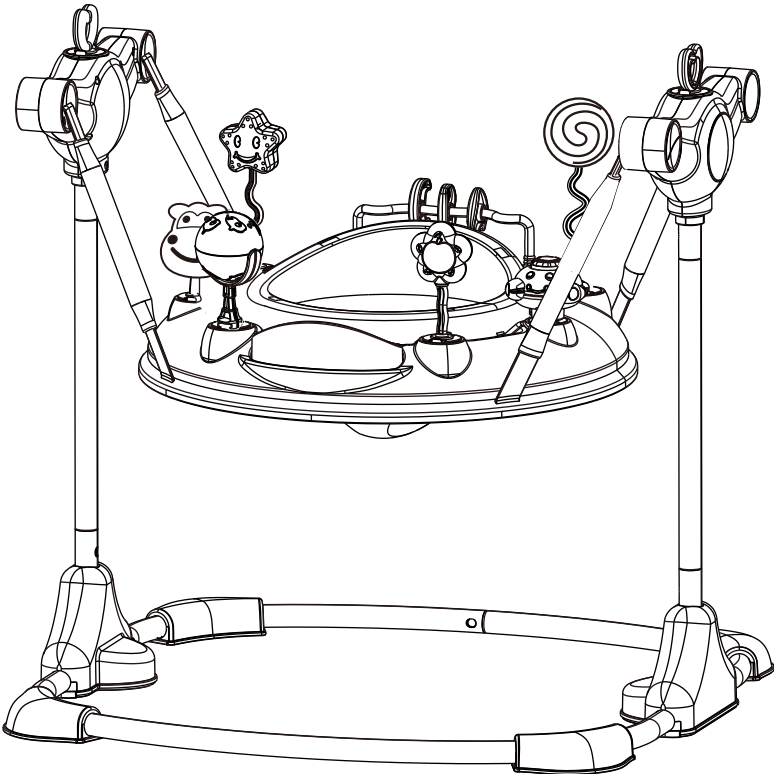
WARNING:

BEFORE ASSEMBLING THIS ACTIVITY CENTRE, READ AND UNDERSTAND THE INSTRUCTIONS.
Fall hazard; child’s activity may move activity jumper. Use only on floor.
To avoid tip over, place product on a flat, level surface.
Never use this product on an elevated surface, eg. A table.
Strangulation hazard; strings can cause strangulation!
Do not place items with a string around child’s neck, such as hood strings or pacifier cords.
Do not suspend strings over product or attach strings to toys.
Possible entanglement or strangulation injury when toys are attached to activity centre.
Do not tie together with other toys.
Remove all packaging and fasteners before use.
Begin using the product when the child can hold their head up unassisted (up to a maximum weight of 12 kg / 26.5 lb) and discontinue using the product as a stationary activity centre when the child begins to walk unassisted.
Never leave the child unattended.
Always keep child in view while in product.
Never use near stairs.
Do not let children play with this product.
Do not move or lift this product with the baby inside it.
Do not use if any components are broken or missing.
Do not use the activity centre as a swing.
Do not allow other children to play near the activity centre.
KEEP INSTRUCTIONS IN A SAFE PLACE FOR FUTURE REFERENCE.
KEEP PLASTIC COVERING AWAY FROM CHILDREN TO AVOID SUFFOCATION.
WARNING STAIR HAZARD:
- Age range suitability: 6mths / 12 kg (26.5 lb).
- Ensure all the locking equipment is installed well before using the activity centre.
- DO NOT use the activity centre on a rough surface to avoid any injury to the infant.
- DISCONTINUE USE of activity centre when the child begins to walk unassisted. Maximum weight 12 kg / 26.5 lb.
- This activity centre does not replace a cot or a bed. Should your child need to sleep, then it should be placed in a suitable cot or bed.
- A time limit of 20 minutes per use is recommended for the child to be in the activity centre.
- DO NOT use accessories or replacement parts other than those approved by the manufacturer.

anko

6+ months

BOUNCE ACTIVITY CENTRE INSTRUCTION MANUAL

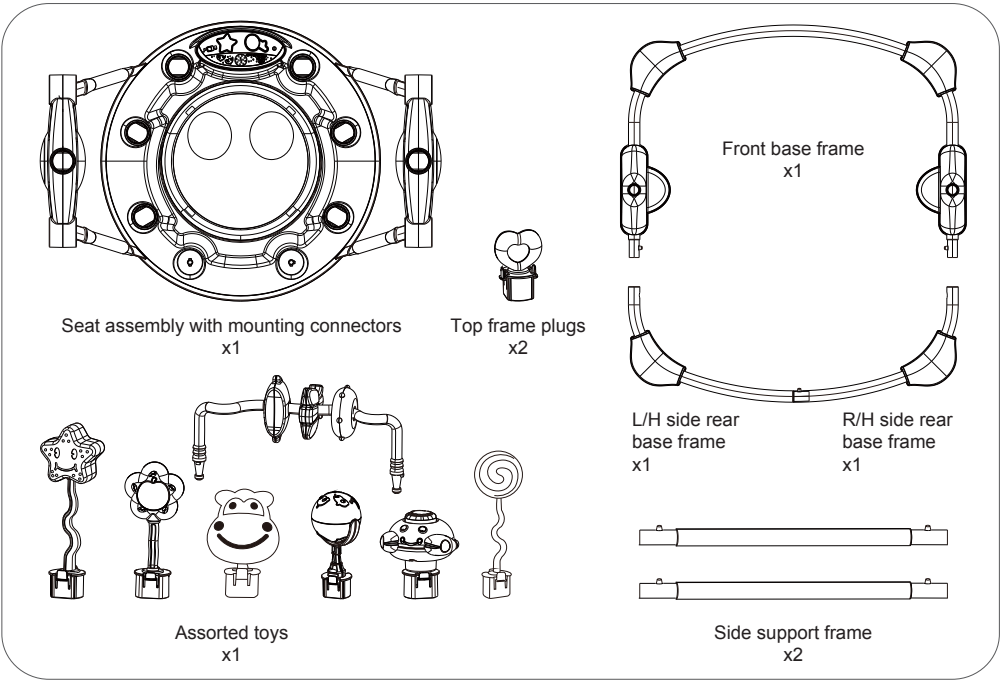


Drawings in the manual are for visual purposes only. Actual product may vary slightly. The manufacturer reserves the right to change any specification or feature without prior notice.

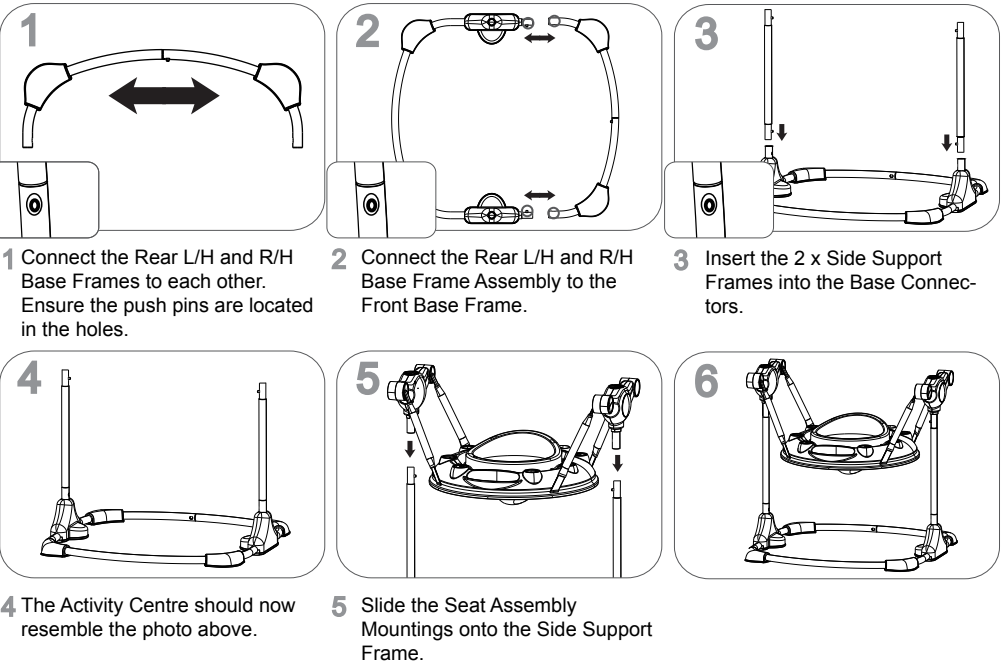
IMPORTANT! KEEP FOR FUTURE REFERENCE

Read these instructions carefully before use and keep for future reference. The child may be hurt if you do not follow these instructions.

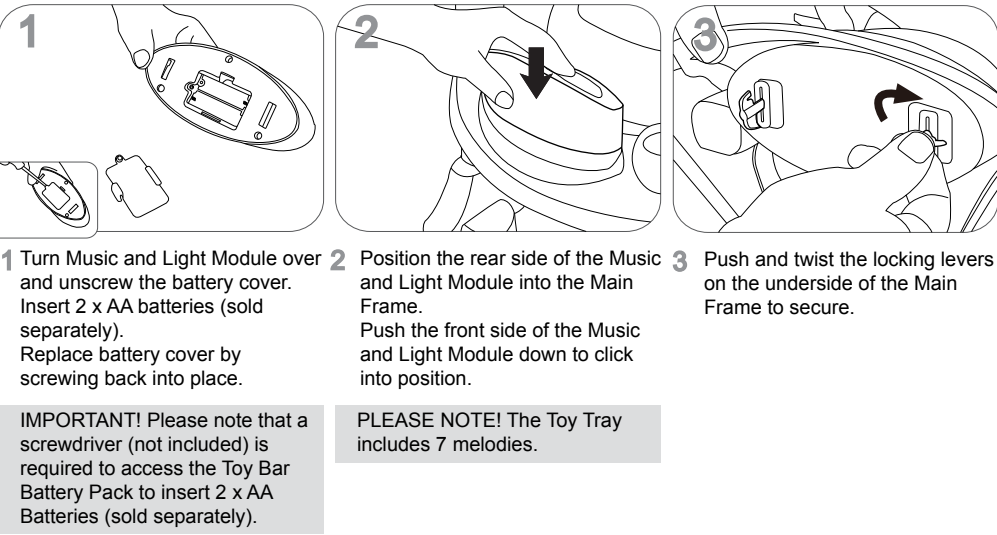
Supplied loose in box



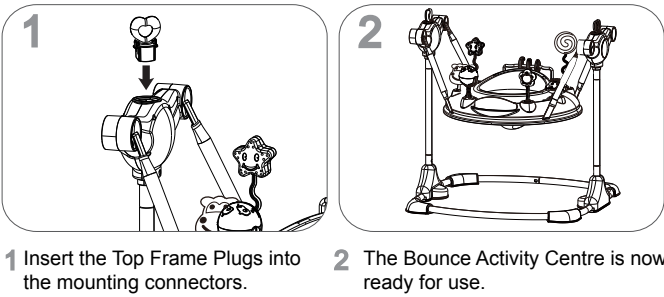
Assemble



To assemble Music & Lights Module



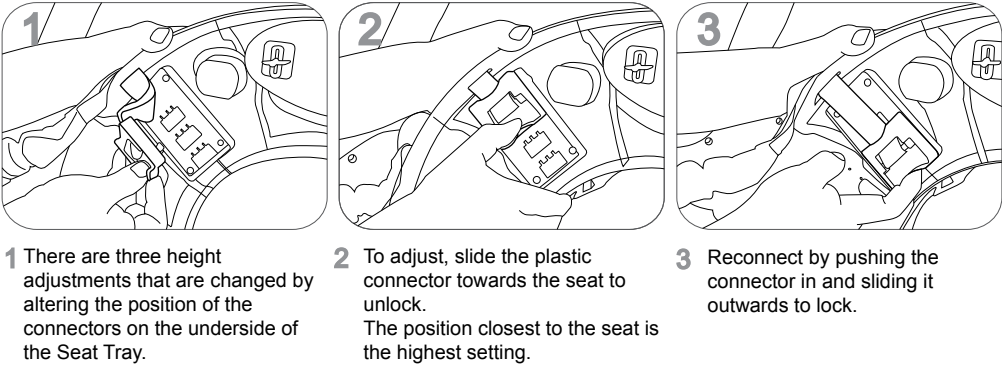
To insert Top Frame Plugs



WARNING:

Do not use the top frame plugs to carry the activity centre.

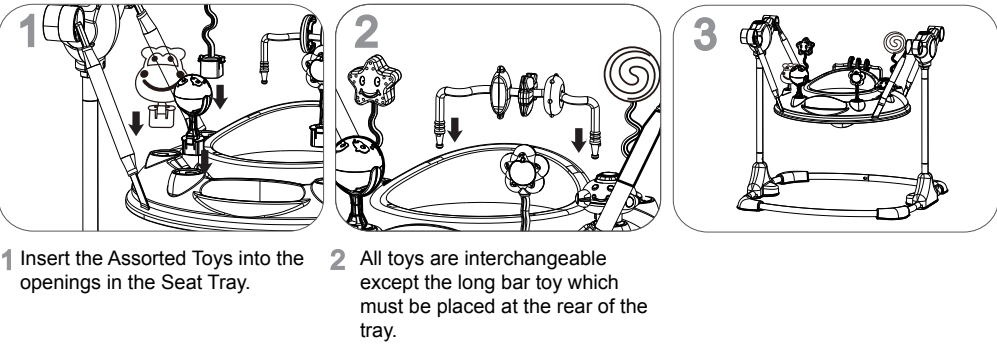
To operate Seat Height Adjustment



WARNING:

Do not mix old and new batteries.
Do not mix alkaline, standard (carbon-zinc) or rechargeable (nickle-cadmium) batteries.
Adult supervision is required when charging rechargeable batteries.
Always remove flat or exhausted batteries from the toy.
Do not short-circuit the supply terminals.
Non-rechargeable batteries are not to be recharged.

To assemble Assorted Toys



Keycode: 42836407

MADE IN CHINA

FOR AU / NZ: IMPORTED FOR KMART STORES IN AUSTRALIA AND NEW ZEALAND.
FOR USA: IMPORTED BY ANKO RETAIL INC.
19500 ALDERWOOD MALL PARKWAY
LYNNWOOD WA 98036 USA.