

150*210MM

anko
Beard Trimmer
Instruction Manual



Model no.: RFC-1804

Save these instructions for future reference.

SAFETY GUIDE

PLEASE READ CAREFULLY BEFORE USING THIS APPLIANCE

Please follow all the precautions listed below for safety and to reduce the risk of injury or electric shock.



WARNING: READ ALL INSTRUCTIONS; FAILURE TO FOLLOW ALL INSTRUCTIONS LISTED BELOW MAY RESULT IN ELECTRIC SHOCK, FIRE OR SERIOUS PERSONAL INJURY.

SAVE THESE INSTRUCTIONS FOR FUTURE REFERENCE

- For hygienic reasons, do not share this appliance with other people.
- This appliance contains batteries that are non-replaceable.
- When switched ON, the appliance must never come-in contact with the hair on your head, eyelashes, etc.to prevent any danger or injury as well as to prevent blockage or damage to the appliance
- Only use the appliance as described in this manual.
- Do not immerse the appliance in water or any other liquid.
Warning: Keep the appliance dry
- Do not allow the appliance to be exposed to rain or moisture during use or storage.
- Always check the appliance for damage prior to use. If any damage is observed, do not use the appliance.
- The appliance is intended for indoor use only.
- Always switch the appliance OFF after use.
- This appliance has no user serviceable parts. Do not attempt to access the internal components in the appliance.
- This appliance is for personal use only, not designed for commercial use.
- Do not use it outdoors.
- Do not use** the appliance if it is not working properly, if it has been dropped or if it has been immersed in any liquid.
- Before using the appliance, ensure that the trimmer head is securely fitted.
- Do not use it on children or allow children to play with the appliance.
- The appliance is not to be used by persons (including children) with reduced physical, sensory or mental capabilities, or lack of experience and knowledge, unless they have been given supervision or instructions concerning use of the appliance by a person responsible for their safety.
- Children must be supervised to ensure that they do not play with the appliance.
- For electrical safety, do not operate the charger with a damaged cord or plug, if it is not working properly, if it has been dropped or damaged or dropped into water.
- Use only the original charger supplied with the appliance.
- Check that your supply voltage is the same as that stated on the charger.

2 | Page

- When charging the appliance, the power switch must be OFF.
- It is normal for the charger to become warm to touch when charging.
- Use only attachments provided.
- This product contains sharp blades, please take utmost care during handling and use.
- Do not stretch, twist and curl the cable around the appliance.
- Keep the cable away from hot surfaces.
- Do not replace the batteries with non-rechargeable batteries.
CAUTION: To avoid personal injury, do not use the trimmer if it has a damaged blade.
- Detach the attachment heads for cleaning. Only the attachments can be washed under tap water.
- Do not submerge the appliance, or wash it flow under water-tap.
- Do not use salt water or boiling water. Also, do not use cleaning products that are designed for toilets, bathrooms or kitchen appliances
- The trimmer must be used only with provided battery charger **KH6-050100AU**



WARNING: Do not recharge non-rechargeable batteries.



WARNING: Before charging the product, please make sure your hands are dry.



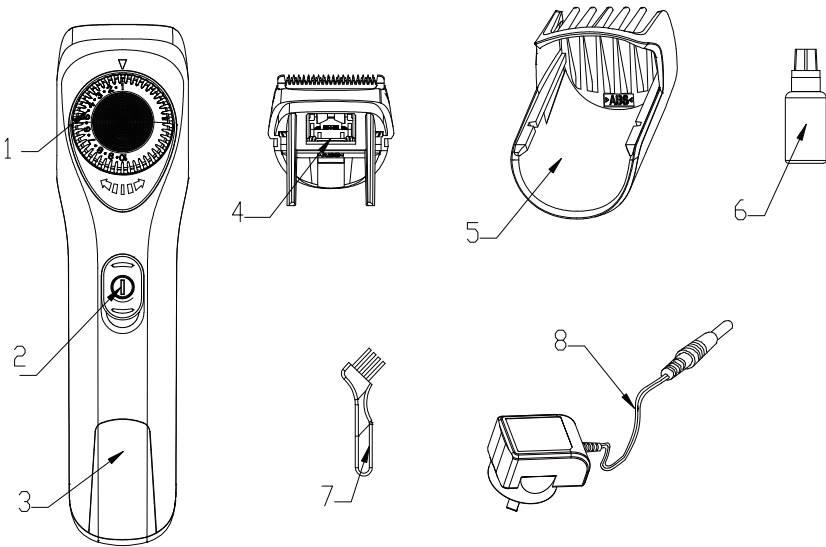
WARNING: Only use with the charger supplied with the appliance. Use of other chargers may cause electrical failure and/or fire.

3 | Page

INTRODUCTION

This appliance is designed for household use only.
The appliance can be used on 100-240V AC voltage. Before connecting the charger into a mains power outlet, make sure the voltage is compatible with the voltage specified on the product.

PARTS



- | | |
|----------------------|----------------------------|
| 1 Cut length dial | 5 Comb attachment (1-10mm) |
| 2 On/Off switch | 6 Oil |
| 3 Charging indicator | 7 Cleaning brush |
| 4 Blade | 8 Charger |

CHARGING

- Fully charge the appliance for 10 to 12 hours before first use.
 - Please make sure the power switch is in the OFF position before charging.
 - Charging indicator will illuminate RED to indicate the battery is charging.
 - Normal charging time is 8 hours.
 - Do not charge for more than 8 hours.
 - When fully charged the trimmer can function continuously for approximately 45 minutes.
- IMPORTANT! Use only with provided charger KH6-050100AU**

4 | Page

BATTERY CARE

To ensure maximum life from the batteries in your rechargeable trimmer, follow these guidelines:

- Do not recharge the unit between sessions. Wait until the batteries are exhausted before recharging.
- Discharge the batteries completely twice a year (switch ON and run until the trimmer stops).
- IMPORTANT! Do not use the trimmer while charging.**
- Do not charge the unit when the temperature is below 0°C or above 40°C
- Avoid recharging the unit in direct sunlight or near a radiating heat source.

OPERATING INSTRUCTIONS

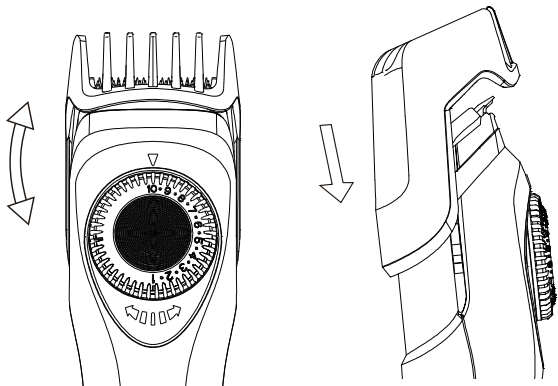


WARNING:
Switch OFF the device before replacing or changing the attachments

- Slide the power switch to the "OFF" position to turn OFF the trimmer.
- Mount the comb attachment and adjust the length setting to give the desired trimming length.
- Slide the power switch to the "ON" position to turn ON the trimmer.
- Trim against hair growth by guiding the flat comb part over the skin.
- Avoid clogging the comb with hair, remove and clean it periodically.

Installing the comb attachment

- Make sure the trimmer is turned OFF before installing the comb.
- Align the length selector to indicator "10".
- Mount the comb attachment to main body as shown below.
- You may adjust the cut length by turning the dial.

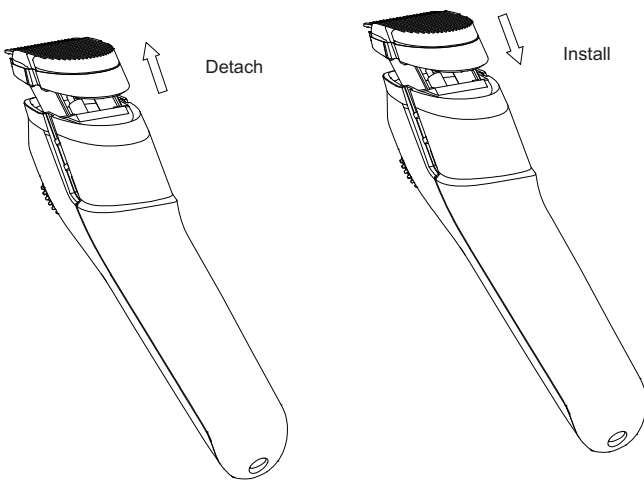


NOTE: The dial will not turn when the trimmer is switched ON.

5 | Page

Installing the blade

- Make sure the trimmer is turned OFF before installing the blade.
- Align the ribs at both sides of the slot at main body.
- Insert the blade head to main body as shown below.



CLEANING AND MAINTENANCE

- Disconnect the charger from clipper. Make sure the trimmer had switched OFF.
- Remove the comb attachment and blade.
- Brush off any hair trimmings around the blade and main body.
- Rinse off any hair trimmings that are sticking to the blades with running water.
- Gently shake the cutting blade then wipe off the water.
- The cutting blades should be lightly oiled with the oil provided once every few trimmings.



WARNING:
The body of the trimmer is not washable. Do not submerge in water.

6 | Page

BATTERY DISPOSAL

If the trimmer is to be disposed the batteries should be removed from the appliance before it is scrapped. The trimmer must be disconnected from the charger when removing the battery. The battery should be disposed safely. Used batteries should be taken to a recycling facility and not disposed of with household waste.

IMPORTANT: Always fully discharge the batteries before removal and ensure the charger is unplugged.

TECHNICAL SPECIFICATIONS

Model no.	RFC-1804
Working time	Approximately 45 minutes
Charging time	8hr
Battery Charger	KH6-050100AU
	Input: 100-240V~ 50/60Hz 0.2A
	Output: 5V DC, 1000mA
Battery type	Ni-MH, 1000mAh, 1.2V (x1 cell)

7 | Page

12 Month Warranty

Thank you for your purchase.

Your new product is warrantied to be free from defects in materials and workmanship for the period stated above, from the date of purchase, provided that the product is used in accordance with accompanying recommendations or instructions where provided. This warranty is in addition to your rights under the Australian Consumer Law.
For New Zealand customers, this warranty is in addition to statutory rights observed under New Zealand legislation.

We will provide you with your choice of a refund, repair (where possible) or exchange (availability dependent) for this product if it becomes defective within the warranty period. The business will bear the reasonable expense of claiming the warranty.

This warranty will no longer apply where the defect is a result of alteration, accident, misuse, abuse or neglect.

Please retain your receipt as proof of purchase and contact our Customer Service Centre as listed below, for the entity you purchased this product from, for any difficulties with your product. Warranty claims and claims for expense incurred in returning this product can be addressed to the respective Customer Service Centre.

Our goods come with guarantees that cannot be excluded under the Australian Consumer Law. You are entitled to a replacement or refund for a major failure and compensation for any other reasonably foreseeable loss or damage.
You are also entitled to have the goods repaired or replaced if the goods fail to be of acceptable quality and the failure does not amount to a major failure.

Contact for Kmart purchases	Contact for Target purchases
Kmart Australia Ltd. C/- Customer Service Centre 690 Springvale Road, Mulgrave Vic 3170 Customer Service: 1800 124 125 (Australia) or 0800 945 995 (New Zealand) or via Customer Help at kmart.com.au	Target Australia Pty Ltd C/- Customer Service Centre 2 Kendall Street, Williams Landing, Vic, 3027 Customer Service: 1300 753 567 or via Customer Help at target.com.au/help/contact-us

8 | Page