

For product support please call:
1300 369 193

BM2800

Video Monitor



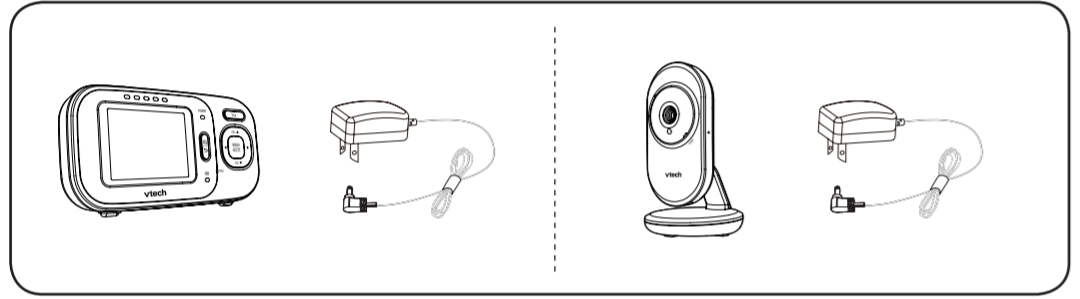
vtech
User's manual

CONGRATULATIONS

on purchasing your new VTech product. Before using this product, please read Important safety instructions.

This manual has all the feature operations and troubleshooting necessary to install and operate your new VTech product. Please review this manual thoroughly to ensure proper installation and operation of this innovative and feature rich VTech product.

WHAT'S IN THE BOX



IMPORTANT SAFETY INSTRUCTIONS

- When using your equipment, basic safety precautions should always be followed to reduce the risk of fire, electric shock and injury, including the following:
- Follow all warnings and instructions marked on the product.
 - Adult setup is required.
 - This product is intended as an aid. It is not a substitute for responsible and proper adult supervision and should not be used as such.
 - This product is not intended for use as a medical monitor.
 - Do not use this product near water. For example, do not use it next to a bath tub, wash bowl, kitchen sink, laundry tub or swimming pool, or in a wet basement or shower.
 - CAUTION: Use only the batteries provided. There may be a risk of explosion if a wrong type of battery is used for the parent unit. Do not dispose of batteries in a fire. They may explode.
 - Use only the adapters included with this product. Incorrect adapter polarity or voltage can seriously damage the product. Baby unit power adapter: Output: 6V DC 400mA Parent unit power adapter: Output: 6V DC 400mA.
 - The power adapters are intended to be correctly oriented in a vertical or floor mount position. The prongs are not designed to hold the plug in place if it is plugged into a ceiling, under-the-table or cabinet outlet.
 - For pluggable equipment, the socket-outlet shall be installed near the equipment and shall be easily accessible.
 - Unplug this product from the wall outlet before cleaning. Do not use liquid or aerosol cleaners. Use a damp cloth for cleaning.
 - Unplug the power cords before replacing batteries.
 - Do not cut off the power adapters to replace them with other plugs, as this causes a hazardous situation.
 - Do not allow anything to rest on the power cords. Do not install this product where the cords may be walked on or crimped.
 - This product should be operated only from the type of power source indicated on the marking label. If you are not sure of the type of power supply in your home, consult your dealer or local power company.
 - Do not overload wall outlets or use an extension cord.
 - Do not place this product on an unstable table, shelf, stand or other unstable surfaces.
 - This product should not be placed in any area where proper ventilation is not provided. Slots and openings in the back or bottom of this product are provided for ventilation. To protect them from overheating, these openings must not be blocked by placing the product on a soft surface such as a bed, sofa or rug. This product should never be placed near or over a radiator or heat register.
 - Never push objects of any kind into this product through the slots because they may touch dangerous voltage points or create a short circuit. Never spill liquid of any kind on the product.
 - To reduce the risk of electric shock, do not disassemble this product, but take it to an authorized service facility. Opening or removing parts of the product other than specified access doors may expose you to dangerous voltages or other risks. Incorrect reassembling can cause electric shock when the product is subsequently used.
 - You should test the sound reception every time you turn on the units or move one of the components.
 - Periodically examine all components for damage.
 - Be aware of possible loss of privacy while using public airwaves. Conversations may be picked up by other nursery monitors, cordless phones, scanners, etc.
 - Children should be supervised to ensure that they do not play with the product.
 - The product is not intended for use by persons (including children) with reduced physical, sensory or mental capabilities, or lack of experience and knowledge, unless they have been given supervision or instruction concerning use of the appliance by a person responsible for their safety.

SAVE THESE INSTRUCTIONS

- Cautions**
- Use and store the product at a temperature between 0°C and 40°C.
 - Do not expose the product to extreme cold, heat or direct sunlight. Do not put the product close to a heating source.
 - Batteries should not be exposed to excessive heat such as bright sunshine or fire.
 - Warning—Strangulation Hazard—Children have STRANGLED in cords. Keep this cord out of the reach of children (more than 1 metre away).
 - Never place the baby unit inside the baby's cot or playpen. Never cover the baby unit or parent unit with anything such as a towel or a blanket.
 - Other electronic products may cause interference with your baby monitor. Try installing your baby monitor as far away from these electronic devices as possible: wireless routers, radios, cellular telephones, intercoms, room monitors, televisions, personal computers, kitchen appliances and cordless telephones.

2 BEFORE USE (CON'T)

3. Place the parent unit more than 1 metre away from the baby units.

CAUTION

- The default volume of your parent unit is level 3, and the maximum volume is level 5. If you experience high-pitched screeching noise from your baby monitor while positioning:
 - Make sure your baby units and parent unit are more than 1 metre apart, OR
 - Turn down the volume of your parent unit.

Operating range

The operating range of the baby monitor is up to 1000 feet (300 metres) outdoors or 160 feet (50 metres) indoors. The actual operating range may vary depending on the environmental conditions and other interferences such as walls, doors and other obstructions.

3 USING THE BABY MONITOR

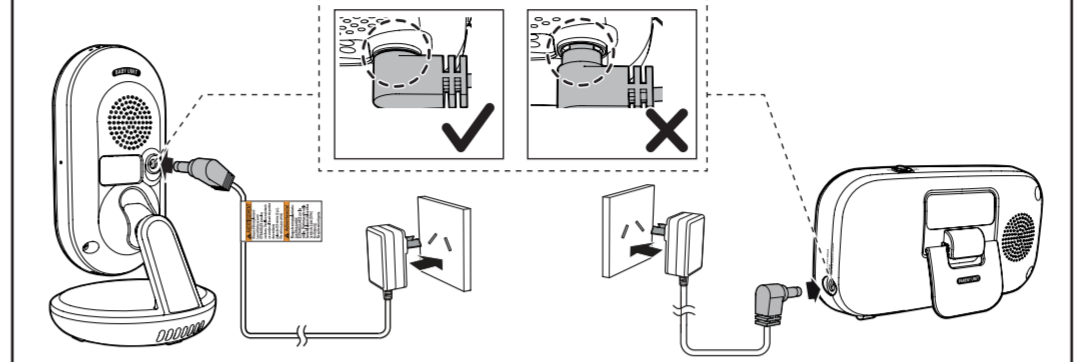
- Power on or off the baby unit**
- Slide the **ON/OFF** switch to **ON** to turn on the baby unit. The **POWER LED** light turns on.
 - Slide the **ON/OFF** switch to **OFF** to turn off the baby unit. The **POWER LED** light turns off.
- Power on or off the parent unit**
- Slide the **ON/OFF** switch to **ON** to turn on the parent unit. The screen and the **POWER LED** light turns on.
 - Slide the **ON/OFF** switch to **OFF** to turn off the parent unit. The screen and the **POWER LED** light turns off.

- Adjust parent unit speaker volume**
- Press **VOL▲/VOL▼** on the parent unit to adjust the speaker volume.
- Adjust LCD brightness**
- You can change the brightness of the parent unit screen from **Level 1** to **Level 5**. The LCD brightness is preset to **Level 3**.
- Press **MENU SELECT** when the parent unit is idle.
 - Press **◀|▶** to choose then press **▲**.
 - Press **▼** or **▲** to choose the desired level of brightness, then press **MENU SELECT** to confirm your selection.

1 CONNECT AND CHARGE THE BATTERY

- NOTES**
- The rechargeable battery is pre-installed in your parent unit.
 - Use only the power adaptors supplied with this product.
 - Make sure the baby monitor is not connected to a switch controlled electric outlet.
 - Connect the power adaptors in a vertical or floor mount position only. The adaptors' prongs are not designed to hold the weight of baby monitor, so do not connect them to any ceiling, under-the-table, or cabinet outlets. Otherwise, the adaptors may not properly connect to the outlets.
 - Make sure the parent unit, the baby unit and the power adaptor/cords are out of reach of children.

Connect the baby monitor



Charge the parent unit battery

When you have connected and turned on the parent unit, the battery will be charged automatically. The battery icon indicates the battery status (see the following table).

- NOTES**
- The parent unit battery is fully charged after 11 hours of continuous charging.
 - It takes longer to charge the battery when the parent unit is turned on. To shorten the charging time, turn the parent unit off while charging.
 - The standby time varies depending on the volume level you set and your actual use.

BATTERY INDICATORS	BATTERY STATUS	ACTION
The screen displays Battery low at Parent Unit . The or light flashes.	The battery has very little charge and may be used for only a short time.	Charge without interruption (about 30 minutes).
The battery icon becomes solid .	The battery is fully charged.	To keep the battery charged, connect it to AC power when not in use.

3 USING THE BABY MONITOR (CON'T)

- Screen off timer**
- You can set the screen off time for the parent unit when there is no key press for a specific time interval. When the screen is turned off, you can still hear sound from the baby unit.
- Press **MENU SELECT** when the parent unit is idle.
 - Press **◀|▶** to choose , then press **MENU SELECT** or **▲** to open the submenu.
 - Press **▼** or **▲** to choose the desired time period to automatically turn off screen (**OFF** / - 5 min. / - 30 min. / - 60 min.), then press **MENU SELECT** to confirm your selection.

Adjust the sound sensitivity of the baby unit

You can choose to hear sounds from the baby unit all the time, or to hear sounds that exceed a certain level. You can use the parent unit to adjust the microphone sensitivity of your baby unit. The higher the sensitivity level, the more sensitive the baby unit is in detecting sounds for transmitting to the parent unit. The VOX sensitivity level is preset to the highest level (**Level 5**).

VOX SENSITIVITY LEVEL	Level 5	Level 4	Level 3	Level 2	Level 1
SENSITIVITY	Highest VOX sensitivity level	High VOX sensitivity level	Medium VOX sensitivity level	Low VOX sensitivity level	Lowest VOX sensitivity level
DESCRIPTION	The parent unit speaker is constantly on, and you will hear all sounds (including background noises) from your baby's room.	The parent unit speaker turns on for soft babbling and louder sounds from your baby. It remains quiet when your baby sleeps soundly.	The parent unit speaker turns on for loud babbling and louder sounds from your baby. It remains quiet when your baby makes soft sounds.	The parent unit speaker turns on for crying and louder sounds from your baby. It remains quiet when your baby makes soft sounds.	The parent unit speaker turns on for loud crying or screeching sounds from your baby. It remains quiet when your baby makes soft sounds.

- Press **MENU SELECT** when the parent unit is idle.
 - Press **◀|▶** to choose , then press **MENU SELECT** or **▲** to open the submenu.
 - Press **▼** or **▲** to choose the desired sensitivity level, then press **MENU SELECT** to confirm your selection.
- NOTE**
- As long as the **Sound-activated screen** setting is **ON**, the screen will turn on automatically when VOX sensitivity is triggered.
- TIP**
- If you want to use a sound machine or white noise machine for natural white noise while using this baby monitor to check on your baby, you can:
 - Lower the volume of your sound machine or white noise machine; or
 - Lower the sensitivity level of your baby monitor to medium (level 3) or below. Default level is the highest level.

Turn on or off the sound activation

When sound activation is on, as long as no sound is detected within 50 seconds, the parent unit screen will turn off automatically to save power.

When your baby unit detects a sound, which exceeds the selected sensitivity level, the sound activation triggers the parent unit screen to turn on automatically. When no sound is detected within 50 seconds, the screen will be off again.

2 BEFORE USE

- NOTE**
- This baby monitor is intended as an aid. It is not a substitute for proper adult supervision, and should not be used as such.

Test your baby monitor

You may test the baby monitor before initial use, and at regular times thereafter.

CAUTION

- For hearing protection, make sure the parent unit is more than 1 metre away from the baby unit. If you hear any high-pitched noise, move the parent unit further until the noise stops. You can also press **VOL▼** on the parent unit to reduce the noise.

1. Make sure your baby unit and parent unit are on.

2. The parent unit displays images from the baby unit.

- Speak towards the microphone of the baby unit. You will hear the sound at the parent unit.

- NOTE**
- When the parent unit displays **No link to Camera**, and the **POWER LED** light flashes, move the parent unit closer to the baby units (observe the minimum distance of 1 metre).
- TIP**
- Increase the speaker volume of the parent unit if you cannot hear the sounds transmitted from the baby units.

Positioning the baby monitor

CAUTION

- Keep the baby unit out of the reach of your baby. Never place or mount the baby unit inside the baby's cot or playpen.

NOTE

- To avoid interference from other electronic devices, place your baby monitor away from devices such as wireless routers, microwaves, cell phones and computers.

- Place the baby units more than 1 metre away from your baby.
- Adjust the angle of the baby unit camera to aim at your baby.

Specifications are subject to change without notice.
 © 2020 Vtech Telecommunications Ltd.
 All rights reserved. 05/20, BM2800_AU_CIB_V2

The chemical symbols Hg, Cd or Pb, where marked, indicate that the battery contains more than the specified value of mercury (Hg), cadmium (Cd) or lead (Pb) set out in Battery Directive (2006/66/EC). The solid bar indicates that the product was placed on the market after 13th August, 2005. Help protect the en

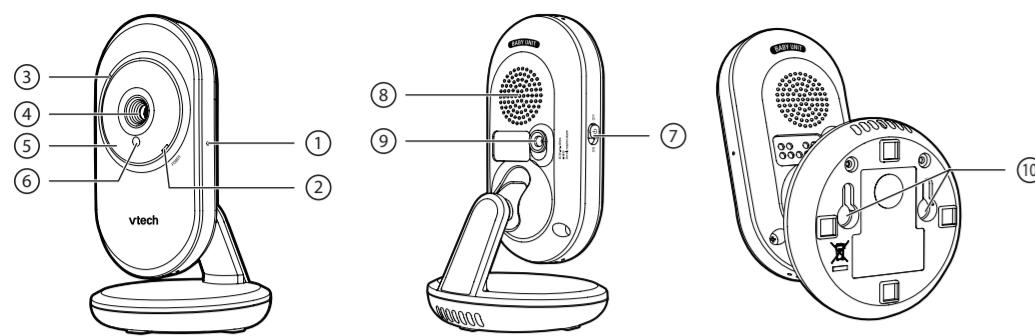
The crossed-out wheeled bin symbols on products and batteries, or on their respective packaging, indicates they must not be disposed of in domestic waste as they contain substances that can be damaging to the environment and human health.

DISPOSAL OF BATTERIES AND PRODUCT

Frequency control	Crystal controlled PLL synthesizer
Transmit frequency	Baby unit: 2407.5 - 2475 MHz Parent unit: 2407.5 - 2475 MHz
Channels	21
LCD	2.4" Color LCD (QVGA 320x240 pixel)
Nominal effective range	Actual operating range may vary according to environmental conditions at the time of use.
Power requirements	Parent unit: 3.6V Ni-MH battery Baby unit power adaptor: Output: 6V DC @ 400mA Parent unit power adaptor: Output: 6V DC @ 400mA

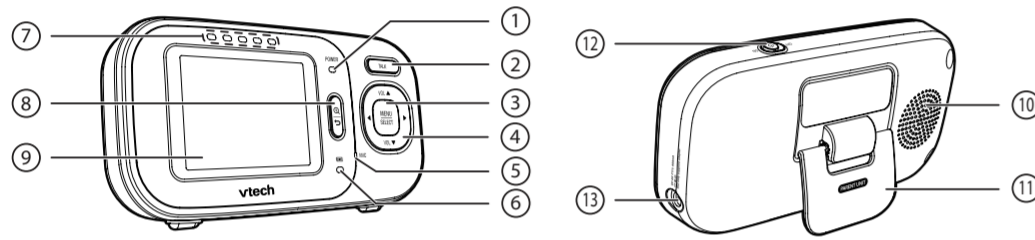
TECHNICAL SPECIFICATIONS

BABY UNIT OVERVIEW



- Pair hole**
 - Your baby units and parent unit provided are already paired.
- POWER LED light**
 - On when the baby unit is turned on and is paired to the parent unit.
 - Flashes when the baby unit is not being viewed, or when the link to the parent unit is lost.
- Microphone**
- Camera**
- Infrared LEDs**
- Light sensor**
- ON/OFF switch**
 - Slide to turn on or off the baby unit.
- Speaker**
- Power jack**
- Wall mount holes**

PARENT UNIT OVERVIEW



- POWER LED light**
 - Green when the parent is powered on.
 - Flashes green when no link to camera.
- TALK**
 - Press and hold** to talk to the selected baby unit.

DIM MODE

The dim mode is to help you save the parent unit power. Your parent unit display will dim automatically after 10 minutes of inactivity, in which there is neither key pressed nor alert received from the baby unit.

- NOTES**
- While the screen is dimmed, any keypress or alert message will trigger the screen to return to the preset brightness level. After 10 minutes of inactivity, it will dim again.

NIGHT VISION

The baby unit has infrared LEDs that allow you to see your baby clearly at night or in a dark room. When the baby unit being viewed detects low light levels, the infrared LEDs are switched on automatically. The images from the baby unit are in black and white, and appears on the screen.

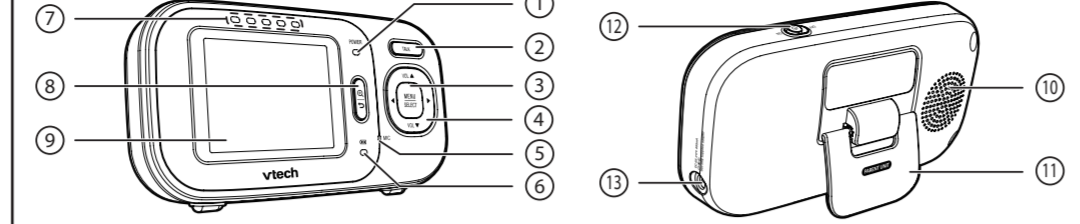
- NOTES**
- It is normal if you see a short white glare on your parent unit screen as the baby unit is adapting to the dark environment.
 - When the infrared LEDs are on, the images are in black and white. This is normal.

- TIP**
- Depending on the surroundings and other interfering factors, like lightings, objects, colors and backgrounds, the display resolution may vary. Adjust the baby unit's angle or place the baby unit at a higher level to prevent glare and blurry display.

GENERAL PRODUCT CARE

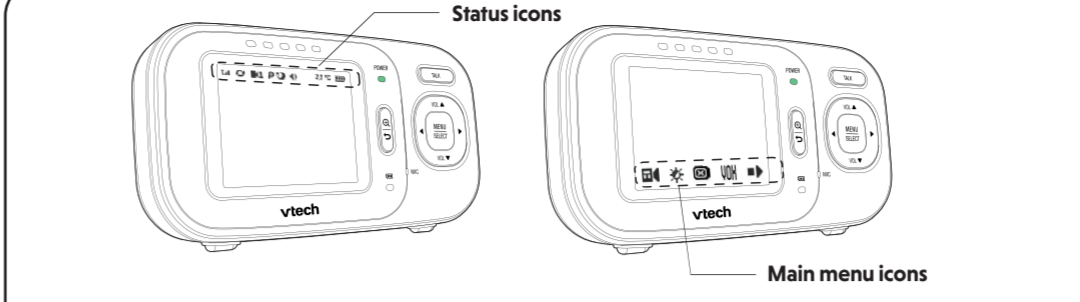
- To keep this product working well and looking good, follow these guidelines:
- Avoid putting it near heating appliances and devices that generate electrical noise (for example, motors or fluorescent lamps).
 - DO NOT expose it to direct sunlight or moisture.
 - Avoid dropping the product or treating it roughly.
 - Clean with a soft cloth.
 - DO NOT immerse the parent unit and the baby unit in water and do not clean them under the tap.
 - DO NOT use cleaning spray or liquid cleaners.
 - Make sure the baby unit and parent unit are dry before you connect them to the mains again.

PARENT UNIT OVERVIEW (CON'T)



- MENU/SELECT**
 - Press to enter or exit the menu.
 - While in a sub-menu, press to choose an item, or save a setting.
- Arrow keys and VOL▲ / VOL▼**
 - VOL▲ / ▲**
 - Press to increase the parent unit speaker volume.
 - While in a menu, press to scroll up, or to enter an item's sub-menu.
 - While zooming, **press and hold** to move the zoomed image upward.
 - VOL▼ / ▼**
 - Press to decrease the parent unit speaker volume.
 - While in a submenu, press to scroll down.
 - While zooming, **press and hold** to move the zoomed image downward.
 - While in a menu, press to choose the next item on the left.
 - While zooming, **press and hold** to move the zoomed image leftward.
 - While in a menu, press to choose the next item on the right.
 - While zooming, **press and hold** to move the zoomed image rightward.
- Microphone**
- Battery indicator**
 - Red when battery is charging.
 - Flashes red when battery is low.
- Visual sound indicators**
 - The visual sound indicators can show the sound level detected by the baby unit.
 - Sound level detected by the baby unit**
 - One to three green lights indicate a moderate sound level detected by the baby unit.
 - Additional red lights indicate a higher sound level detected by the baby unit (e.g. baby crying loudly).
- Zoom / > back**
 - Press to zoom in or out while viewing image.
 - Press to return to the previous screen.
- LCD display**
- Speaker**
- Stand**
- ON/OFF switch**
 - Slide to turn on or off the parent unit.
- Power jack**

PARENT UNIT ICONS



- Status icons**
- Connection status**
 - or displays when strong signal strength is detected between the baby unit and the parent unit.
 - or displays when moderate or low signal strength is detected between the baby unit and the parent unit.
 - displays when the link between the baby unit and the parent unit is lost.
 - Mute alert**
 - Displays when the parent unit is talking to the baby unit.
 - Real-time temperature**
 - Displays the real-time temperature detected by the baby unit in Fahrenheit (°F) or Celsius (°C) (e.g. **57°F** or **14°C**).
 - Battery status**
 - animates when the battery is charging.
 - displays solid when the battery is fully charged.
 - displays when the battery is low and needs charging.
 - Current view status**
 - Displays camera when baby unit successfully linked to parent unit.
 - Zoom**
 - Displays when the current image on the parent unit has zoomed in.
 - Night vision**
 - Displays when the baby unit being viewed has activated the night vision feature.
 - Speaker volume**
 - Displays the parent unit speaker volume level while adjusting.

Main menu icons

- Brightness**
 - You can change the brightness of the parent unit screen.
- LCD screen off timer**
 - You can set a specific time to turn the screen off.
- VOX sensitivity**
 - With this feature, you can choose to hear sounds from the baby unit all the time, or to hear sounds that exceed a certain level. You can use the parent unit to adjust the microphone sensitivity of your baby unit. The higher the sensitivity level, the more sensitive the baby unit is in detecting sounds for transmitting to the parent unit.
- Sound-activated screen**
 - When the baby unit detects no sound, the parent unit screen stays off to save power. Once a sound is detected, the parent unit screen turns on automatically. It will then turn off again after 50 seconds of no sound detection.
- Temperature**
 - You can turn on the temperature alert tone so that the parent unit beeps whenever the room temperature detected by the baby unit falls outside of the desired temperature range. You can choose in Fahrenheit (°F) or Celsius (°C) as the temperature format displayed, or set the maximum/minimum temperature limit for alerts.

Warning icons and messages

- The selected baby unit is out of range or is turned off.
- The battery is empty and needs to be recharged.
- or The temperature detected by the baby unit is higher/lower than the desired temperature alert range.
- The parent unit is searching for baby units.
- The parent unit is connected to AC power.

MOUNT THE BABY UNIT (OPTIONAL)

Items to purchase

You will need to purchase the following items separately to mount your baby unit:

- 2 screws
- 2 anchors

NOTE

- The types of screws and anchors you need depend on the composition of the wall.

Use a pencil to mark two holes in parallel. Make sure they are the same distance apart as the wall mount holes on the baby unit.

- Drill two holes in the wall. If you drill the holes into a stud, go to step 3.
- Insert the screws into the holes and tighten the screws until only 1/4 inch of the screws are exposed.
- Align the wall mount holes on the baby unit with the screws on the wall. Slide the baby unit down until it locks into place.
- Adjust the camera angle.

STORAGE

When you are not going to use the baby monitor for some time, store the parent unit, the baby unit and the adaptors in a cool and dry place.

FREQUENTLY ASKED QUESTIONS

Below are the questions most frequently asked about the soother. If you cannot find the answer to your question, please contact TechHelp on 1300 369 193.

Why does the baby monitor not respond normally?	Try the following (in the order listed) for common cure: 1. Disconnect the power to the baby units and the parent unit. 2. Wait a few seconds before connecting power back to the baby units and the parent unit. 3. Turn on the baby units and the parent unit. 4. Wait for the parent unit to synchronize with the baby units. Allow up to one minute for this to take place.
Why don't the power-on light of the baby unit and parent unit go on when I switch on the units?	Perhaps the parent unit is not connected to the power. Insert the appliance plug into the parent unit and put the adaptor in a wall socket. Then, slide the ON/OFF to switch on the parent unit and to establish connection with the baby unit. Perhaps the baby unit is not connected to the power. Insert the appliance plug into the baby unit and put the adaptor in a wall socket. Then, slide the ON/OFF switch to ON to switch on the baby unit and to establish connection with the parent unit.
Why doesn't my parent unit charge while connected to AC power?	Make sure the power is not controlled by a wall switch.
Why is my screen in black and white?	The screen is in black and white during night-time or in a dark room when the night vision feature is activated. This is normal.
Why do I get glare or blurry display on my screen when viewing my baby at night?	During night-time or in a dark room, the surroundings and other interfering factors, like lightings, objects, colors and backgrounds may affect the image quality on your parent unit screen. Adjust the baby unit's angle or place the baby unit at a higher level to prevent glare and blurry display.
Why does the baby monitor produce a high-pitched noise?	The parent unit and baby units may be too close to each other. • Move the parent unit away from the baby units until the noise stops; OR • Turn down the volume of your parent unit.
Why does the parent unit beep?	The baby units may be out of range. Move the parent unit closer to the baby units (but not less than 1 metre). The parent unit may not have enough charge for the parent unit to perform normally. Charge the battery in the parent unit for up to 11 hours. The temperature of your baby's room may be too high or too low.
Why don't I hear a sound/Why can't I hear my baby cry?	The parent unit speaker volume may be too low. Press VOL▲ to increase the volume, or use the parent unit menu to change sound sensitivity level to the highest level (level 5).
Why can't I establish a connection? Why is the connection lost every now and then? Why are there sound interruptions?	The baby units may be out of range. Move the parent unit closer to the baby units (but not less than 1 metre). Other electronic products may cause interference with your baby monitor. Try installing your baby monitor as far away from these electronic devices as possible. If you power on only one baby unit, your parent unit may display and the POWER LED light flashes. Switch to the baby unit you have powered on via menu.

CUSTOMER SERVICE AND PRODUCT WARRANTY

IMPORTANT

Please retain this booklet with your sales receipt as proof of the date of purchase.

Customer Service

If you require assistance in operating this product, please call the TechHelp Information Line on 1300 369 193 or contact VTech by e-mail at: tcpsupport_au@vtech.com.

Voluntary Product Enquiry

In addition to your Statutory Rights and subject to the conditions below, VTech warrants that this product will be free from any defect in materials or workmanship under conditions of normal use for a period of 24 months from date of purchase.

VTech does not warrant that the product will be free from defects if defects are caused by an accident, misuse, abuse, improper installation or operation, vermin infestations, lack of reasonable care, unauthorised modification, loss of parts, tampering or attempted repair by a person not authorised by VTech; or where the product has been damaged by lightning or a mains power surge. To make a claim under this Voluntary Product Warranty you must call the TechHelp Information Line on 1300 369 193 or contact VTech by e-mail at: tcpsupport_au@vtech.com where a Customer Service Representative will inform you of the product return process. You will need to ensure that:

- You provide proof of purchase;
- Your product is suitably packaged (original packaging is not required); and
- You have included all components from the original purchase.

For your records

Date of purchase: _____

Place of purchase: _____

Serial number: _____

For Voluntary Product Warranty purposes, proof of purchase is required so please keep your receipt.

The benefits conferred by this Voluntary Product Warranty are in addition to other rights and remedies that are available to you under law, which cannot be excluded. The processes for this Voluntary Product Warranty in no way limit your rights which arise as a result of your Statutory Rights.

This Voluntary Product Warranty is given by:
VTech Telecommunications (Australia) Pty Ltd ABN 70 136 672 627
Address: 24 Gilby Road, Mount Waverley 3149

IMPORTANT NOTE: THIS IS NOT A PRODUCT RETURN OR SERVICE ADDRESS – PLEASE CONTACT TECHHELP BY PHONE OR EMAIL FOR PRODUCT AND WARRANTY SUPPORT. NO LIABILITY WILL BE ACCEPTED BY VTECH FOR PRODUCTS RETURNED TO THIS ADDRESS UNDER THIS VOLUNTARY PRODUCT WARRANTY.

Phone number: 1300 369 193
Email address: tcpsupport_au@vtech.com

Statutory Rights

Our goods come with guarantees that cannot be excluded under the Australian Consumer Law. You are entitled to a replacement or refund for a major failure and compensation for any other reasonably foreseeable loss or damage. You are also entitled to have the goods repaired or replaced if the goods fail to be of acceptable quality and the failure does not amount to a major failure.