

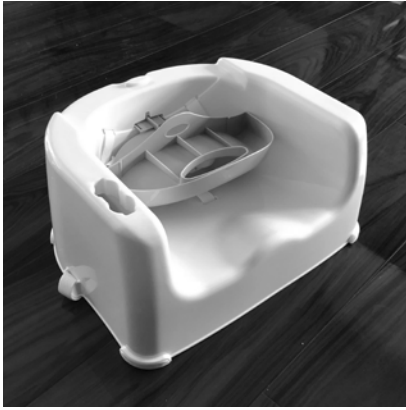
**FEEDING BOOSTER SEAT
INSTRUCTION MANUAL**

6-36
months

IMPORTANT! KEEP FOR FUTURE REFERENCE.



PARTS LIST



Booster Seat with backrest x 1

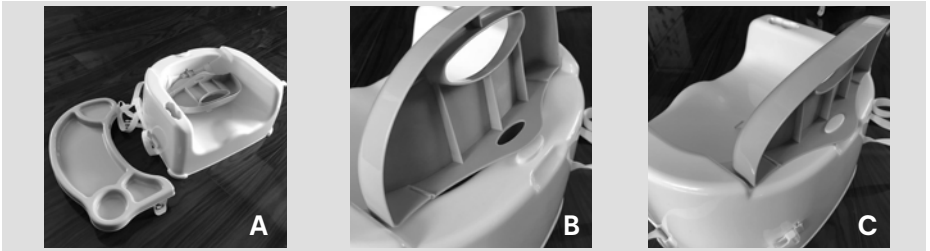


Tray x 1

ASSEMBLY INSTRUCTIONS

1. Unfold booster seat

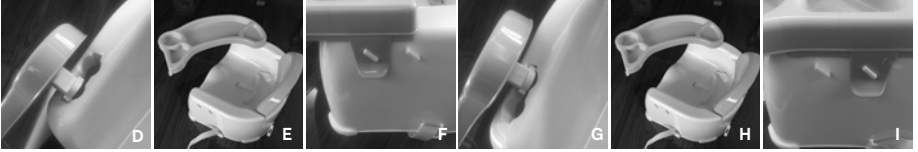
Once the booster seat is removed from the packaging, it will be in the folded position (See image A). Raise the backrest until it snaps into place in the upright position (See images B and C).



2. Tray installation

Install the tray to the outer position of armrest. Slide the tray towards the backrest until it snaps into place of the outer tab. Check that it is locked into place by pulling and gently lifting the tray (See images D, E and F).

To adjust for a smaller child, release the tab and slide the tray away. Repeat above steps to install the tray to inner position and snap into place of the inner tab (See images G,H and I).



3. Attaching to an adult seat

Place the booster seat on the chair. Position it tightly against the chair's backrest and secure it by fastening the rear strap around the backrest (See images J and K).

Feed the bottom strap under the seat and secure into place (See images L and M).

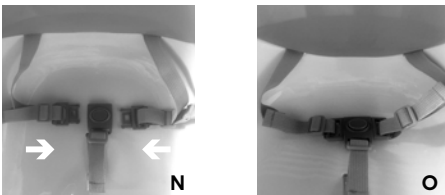
Tighten the straps by pulling on the loose ends until both straps are snug and taut around the chair.



4. Secure Child

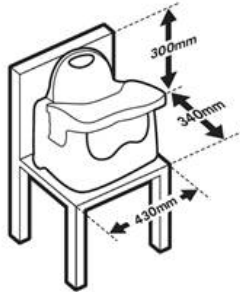
To secure your child in the harness, push the buckle prongs into the buckle housing until they snap into position (See images N and O).

Adjust the slider to ensure a snug fit for your child. After making adjustments to the adult seat, always readjust the harness.



WARNING:

1. Never leave the child unattended.
2. Always use the restraint system and ensure it is correctly fitted.
3. Always use the chair attachment system and ensure it is correctly fitted before use.
4. Always check the security and the stability of the product on the adult chair before use.
5. Do not use this product on stools or benches.
6. This product is intended for children able to sit unaided (minimum 6 months) and up to 36 months or a maximum weight of 15 kg.
7. Before attaching this product to an adult chair, make sure the chair meets the minimum dimensions shown below.



8. Place the adult chair with the booster seat in a position where the child is not able to use its feet to push against the table or any other structure as this can cause the chair to tip over.
9. Adult assembly required.
10. Read all the instructions before assembly and use of the product.
11. Take care when unpacking and during assembly.
12. Dispose of all packing materials carefully after assembly.
13. Inspect the product before assembly and periodically during use.
14. Never use this product if there are any loose or missing fasteners, joints or broken parts.
15. Any additional or replacement parts should only be obtained from the manufacturer or distributor.
16. Never substitute parts.

CARE INSTRUCTIONS:

Surface clean only. Wipe with a damp cloth.

Keycode: 42627814

MADE IN CHINA

© KMART AUSTRALIA LIMITED

ANKO, KIDS&CO. AND BABY SOLUTIONS® ARE TRADEMARKS OF KMART AUSTRALIA LIMITED. THEY ARE USED IN NEW ZEALAND BY KMART NZ HOLDINGS LIMITED TRADING AS KMART IN NEW ZEALAND.

KMART AUSTRALIA - 690 SPRINGVALE ROAD, MULGRAVE, VIC 3170 AUSTRALIA.

KMART NEW ZEALAND - REGIONAL OFFICE C/O KMART PAPATOETOE STORE, HUNTERS PLAZA, GREAT SOUTH ROAD, PAPATOETOE, AUCKLAND, NEW ZEALAND.