

Instruction Manual

Instant 6 Person Tent

(Keycode : 42500551)

Product Image-



Parts list-

No.	Part name	Quantity	Image
1	Inner tent body	X1	
2	Flysheet body	X1	
3	Guy rope	X6	
4	Steel pole	X2	
5	Pegs	X28	

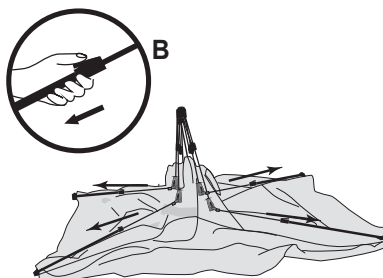
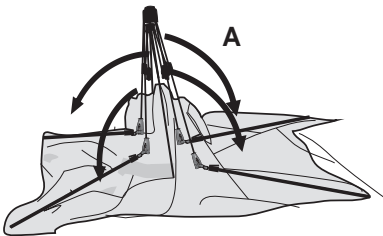
Please read all instructions carefully and sure you have all parts before starting to assemble.

Assembly steps-

Pitching

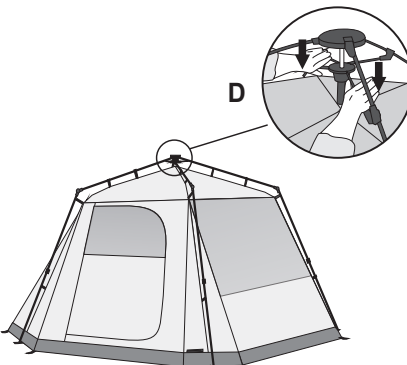
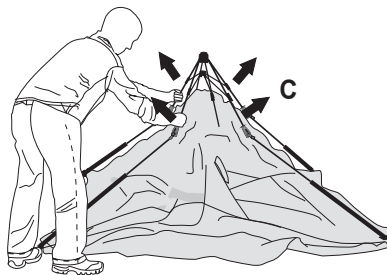
Step 1,

Putting up your tent. Take out the tent and unfold it as below, pull out the pole corners from centre and pull fiberglass pole from alloy pole tube at the same time.



Step 2,

Lift the pole knuckle in centre up as shown in sketch C. Push down the poles beside the spring mechanism until they all click into place Sketch D. Peg down the tent where you want set you camp sight.



Step 3,

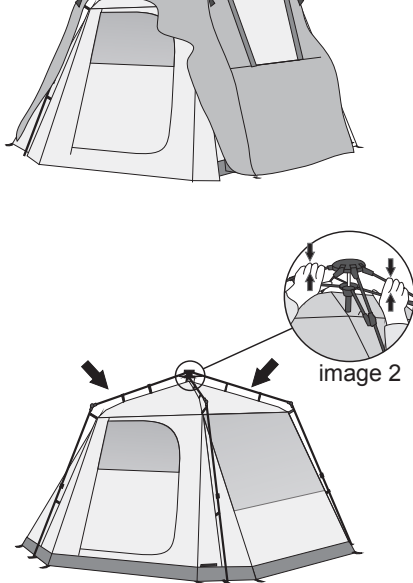
Cover the flysheet on the inner tent, secure the elastic loops and ropes to ensure tent is stable. Both flysheet doors can set up by steel poles to create awning.



Packing

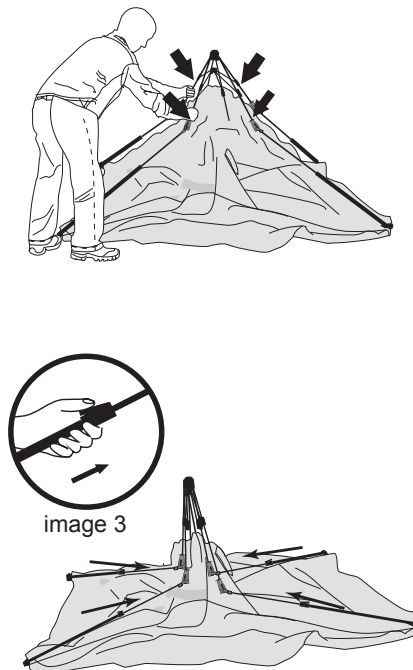
Step 1,

Remove the fly sheet and unpeg guy ropes & tent body.
Take down your tent. Uplift the pole beside the spring mechanism until it becomes loose, refer to image 2.



Step 2,

Fold down the top ridge poles.
Press the button on alloy pole tube, let fiberglass pole slide into the alloy pole tube. refer to image 3.



Step 3,

Pull the knuckles and fold the pole back. Refer to image A and B. Roll the tent before placing in the carry bag with the fly and pegs.



Warning -

- KEEP ALL FLAME AND HEAT SOURCE AWAY FROM THIS TENT FABRIC
- DO NOT USE CANDLE, MATCHES OR OPEN FLAME OF ANY KIND IN OR NEAR THE TENT
- DO NOT COOK INSIDE THE TENT
- DO NOT SMOKE IN THE TENT
- DO NOT STORE FLAMMABLE LIQUIDS INSIDE THE TENT
- EXTINGUISH OR TURN OFF ALL LANTERNS BEFORE GOING TO SLEEP
- CHOOSE LEVEL SITE TO ERECT TENT THAT IS CLEAR FROM OVERHANGING BRANCHES AND NOT IN LOW LYING AREAS THAT COULD BE SUBJECT TO FLOODING

Care instruction-

- WIPE CLEAN WITH A DAMP CLOTH
- DO NOT USE ABRASIVE MATERIALS AND SOLVENTS
- ENSURE TENT IS CLEAN & DRY BEFORE PACKING OR STORING TO PREVENT DAMAGE FROM MOULD & MILDEW

Made In China