

#62056

220-240V~ 50Hz, 110W

KC 42494881



Electrical Pump OWNER'S MANUAL

303021185820



OPERATING INSTRUCTIONS

NOTICE: READ CAREFULLY BEFORE OPERATING AND SAVE THESE INSTRUCTIONS.

CAUTION: TO AVOID THE RISK OF ELECTRIC SHOCK, DO NOT EXPOSE TO WATER OR RAIN.

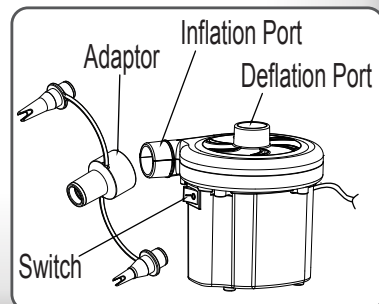
FOR INDOOR USE ONLY.

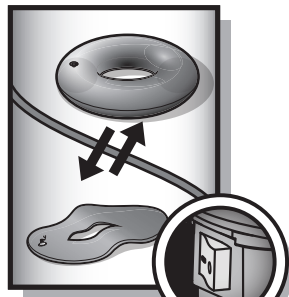
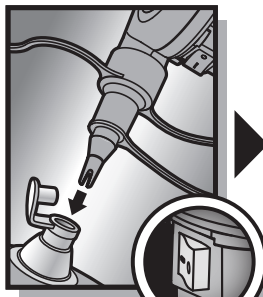
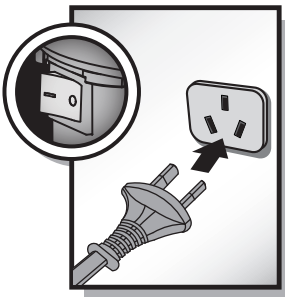
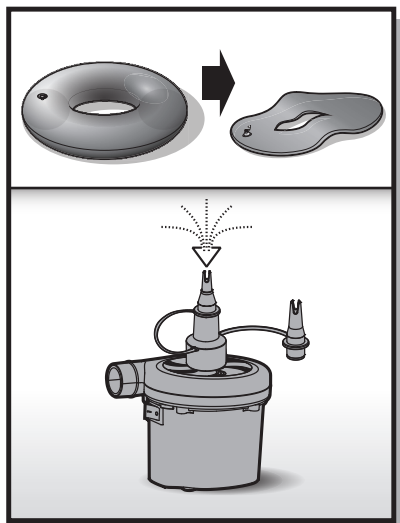
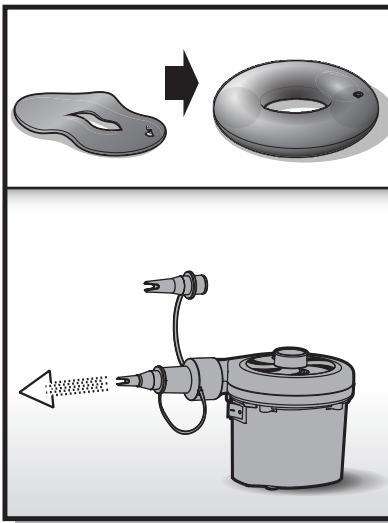
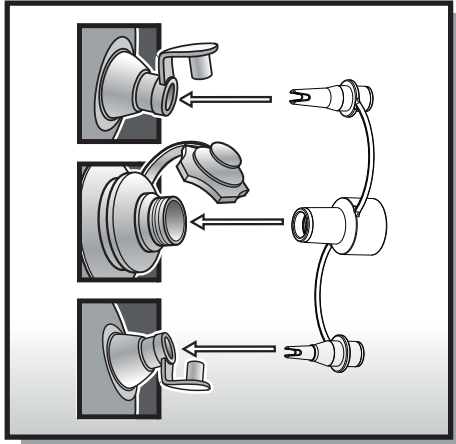
WARNING:

1. If the supply cord is damaged , it must only be replaced by a qualified electrician or disposed of in order to avoid a hazard.
2. Motor run time should not exceed 20 minutes. Allow to cool for 10 minutes between uses.
3. Keep inflation and deflation ports free from debris during use.
4. Store product in a dry location.
5. This appliance is not intended for use by persons(including children) with reduced physical, sensor or mental capabilities, or lack of experience and knowledge, unless they have been given supervision or instruction concerning use of the appliance by a person responsible for their safety. Children should be supervised to ensure they do not play with this product.

NOTE 1: Not all air valves can be deflated by the pump, some one-way valves require manual deflation.

NOTE 2: Some items have a special air-tight inner safety valve, which prevents air loss. We recommend these items be deflated by simply unscrewing the valve instead of deflating with the pump.





NOTE: Drawings for illustration purpose only. May not reflect actual product. Not to scale.

