

K: 42477693 | T: 68716677
ROUND AROMA DIFFUSER
SLR-16050

IMPORTANT! Care should be taken with the use of diffusers around animals. Both the choice of essential oils and where animals are should be taken into consideration when in use.

IMPORTANT SAFETY INSTRUCTIONS:

The following safety precautions should always be followed, to reduce the risk of electric shock, personal injury or fire. It is important to read all of these instructions carefully before using the product, and to save them for future reference or new users.

1. This product must only be used as intended in accordance with the enclosed operating instructions.
2. Do not carry the appliance by the mains cable or pull the cable to remove the plug from the socket.
3. If the appliance stops unexpectedly or appears to malfunction, switch off the power supply, unplug from the mains and stop using immediately. Seek professional advice to rectify the fault or make repairs.
4. Switch off the power supply or unplug from the mains socket when not in use, before cleaning or changing accessories.
5. Avoid positioning the appliance where the power cable might be accidentally trapped or damaged.
6. Keep the appliance and cable away from sources of heat, sharp objects or anything that may cause damage.
7. Ensure the appliance is switched OFF before connecting the mains power supply.
8. Be aware that some surfaces may become hot. Do not touch hot surfaces and supervise others accordingly.
9. This product has not been designed for use by children.
10. Children should be closely supervised at all times when they are near any electrical appliance.
11. To protect against electric shock, never allow the appliance, the mains cable or plug to come into contact with water or any other liquid.
12. Never reach for any appliance that has fallen into water. Switch off the power supply at the mains immediately and unplug. Do not re-use until the product has been inspected and approved by a qualified electrician.
13. Always ensure that hands are dry before operating or adjusting any switch on the product or touching the plug and mains supply connections.
14. To disconnect, first ensure that all controls are in the OFF position, then remove the plug from the electricity supply.
15. Where relevant keep all ventilation slots, filters, etc. uncovered and clear of debris. Never drop or insert objects into the openings.
16. Do not use outdoors. This appliance has been designed for domestic indoor use only.
17. The appliance is not to be used by persons (including children) with reduced physical, sensory or mental capabilities, or lack of experience and knowledge, unless under close supervision and instruction.

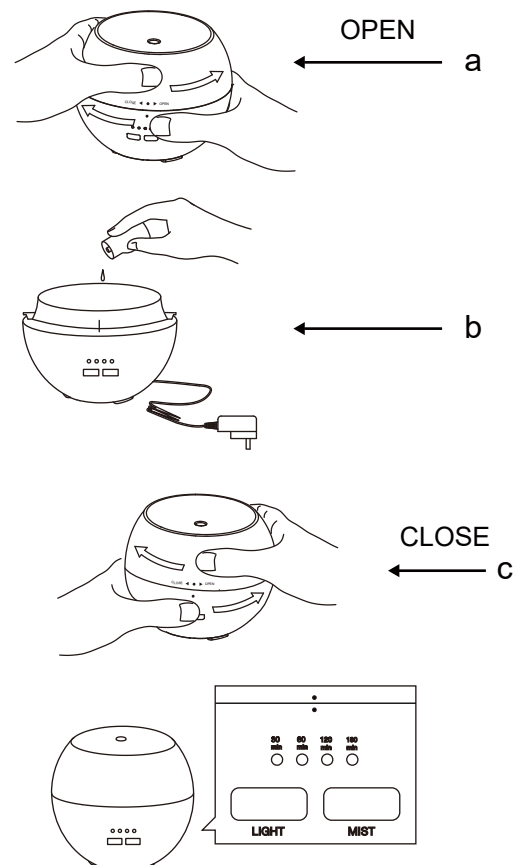
CAUTION: TO PREVENT LESS OR NO STEAM FROM THE DIFFUSER, DO NOT ADD WATER ABOVE THE MAX LEVEL MARK. TO PREVENT MELTING DAMAGE, DO NOT ADD MORE THAN 10 DROPS OF ESSENTIAL OIL INTO THE CONTAINER.

Power adaptor (use provided power adaptor only KL06-1200500AU)

- INPUT: 100-240V ~ 50/60 Hz Max. 0.3A
- OUTPUT: 12V DC 500mA
LED 0.6W Max

INSTRUCTIONS FOR ASSEMBLY

1. Connect the diffuser with the adaptor.
2. Twist anticlockwise to open the cover (a).
3. Pour suitable amount of water into the tank and make sure it is within the max. water level. Add approximately 6 drops of essential oils to the water (b).
4. Cover and close the lid as per correct position (c).
5. Connect the adaptor to the mains.
6. To turn ON, press the "Mist" button and select the desired time setting: 30 mins, 60 mins, 120 mins or 180 mins.
7. To turn OFF, press and hold the 'Mist' button for one second.
Note: The diffuser will switch OFF automatically when the set time period has elapsed or when the water in the container runs out.



Attention

1. Do not use as medical respirator.
2. Do not use the product when there is an abnormal noise or the diffuser is overheating abnormally.
3. Do not cover or block the mist outlet or air inlet.
4. Do not use inferior essential oils. Use 100% pure essential oils.
5. Do not take off the cover during operation of the diffuser.
6. Do not place near an electric device such as a computer, TV or audio equipment.
7. Do not use hot water or mineral water. Always use tap water or distilled water.
8. Keep out reach of children or pets.
9. Light flickers with the water movement to improve the room ambience.

Maintenance

To help ensure a long working life, please properly maintain the diffuser. It's necessary to maintain the diffuser as outlined below once it has been used 5-6 times or for 2-3 consecutive days.

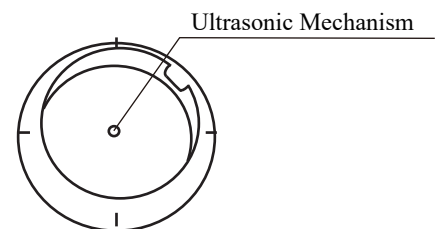
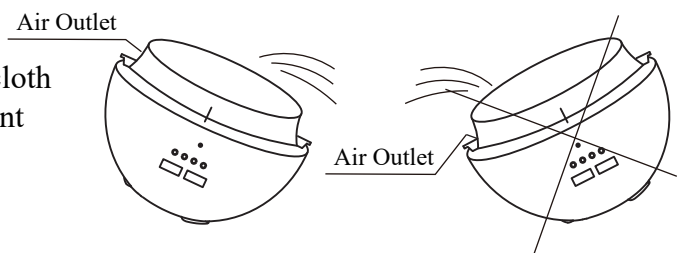
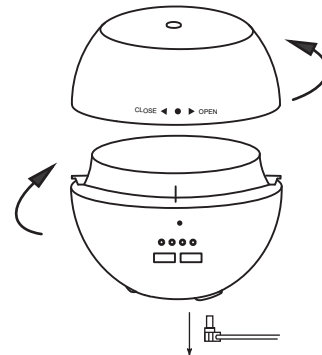
1. Disconnect the adaptor from the diffuser base. Take off the cover while keeping the diffuser completely level. DO NOT tip from side to side.
2. If there's water left in the tank, pour it from the drain side. DO NOT pour from the air outlet side, as water may flow into the base of the diffuser.
3. Use a gentle diluted mild kitchen detergent on a damp cloth to remove any essential oil residue, ensuring no detergent remains.

IMPORTANT: DO NOT press heavily or scratch the ultrasonic mechanism in the water tank during cleaning.

4. Add water **without essential oil** into the tank to Max level and set the timer for 30 minutes. After 30 minutes pour out remaining water and gently wipe the water tank clean, especially the atomizer plate.

Please DO NOT use chlorine or acidic based detergents for cleaning outside or inside of the diffuser.

Please use neutral detergents like diluted kitchen detergents.



Troubleshooting		
Problem	Possible reason	Solution
Unit does not work	Connection problem	Check whether the adapter is connected correctly
Unable to spray mist or spray is bad	Water tank might be dirty	Clean the water tank, especially the atomizer plate
	Too much water might be inside the tank	Make sure water inside tank is not over the max water level
	Cover is not closed properly	Make sure the cover is tightened
	Is the bottom air inlet dirty?	Clear away the dust in the bottom air inlet
	Water level very low	Fill with more water
Caution: Do not shake or tilt the product when there is water in the container or else the product may not work correctly.		



12 Month Warranty

Thank you for your purchase.

Your new product is warrantied to be free from defects in materials and workmanship for the period stated above, from the date of purchase, provided that the product is used in accordance with accompanying recommendations or instructions where provided. This warranty is in addition to your rights under the Australian Consumer Law.

For New Zealand customers, this warranty is in addition to statutory rights observed under New Zealand legislation.

We will provide you with your choice of a refund, repair (where possible) or exchange (availability dependent) for this product if it becomes defective within the warranty period. The business will bear the reasonable expense of claiming the warranty.

This warranty will no longer apply where the defect is a result of alteration, accident, misuse, abuse or neglect.

Please retain your receipt as proof of purchase and contact our Customer Service Centre as listed below, for the entity you purchased this product from, for any difficulties with your product. Warranty claims and claims for expense incurred in returning this product can be addressed to the respective Customer Service Centre.

Our goods come with guarantees that cannot be excluded under the Australian Consumer Law. You are entitled to a replacement or refund for a major failure and compensation for any other reasonably foreseeable loss or damage. You are also entitled to have the goods repaired or replaced if the goods fail to be of acceptable quality and the failure does not amount to a major failure.

Contact for Kmart purchases	Contact for Target purchases
Kmart Australia Ltd. C/- Customer Service Centre 690 Springvale Road, Mulgrave Vic 3170 Customer Service: 1800 124 125 (Australia) or 0800 945 995 (New Zealand) or via Customer Help at kmart.com.au	Target Australia Pty Ltd C/- Customer Service Centre 2 Kendall Street, Williams Landing, Vic, 3027 Customer Service: 1300 753 567 or via Customer Help at target.com.au/help/contact-us