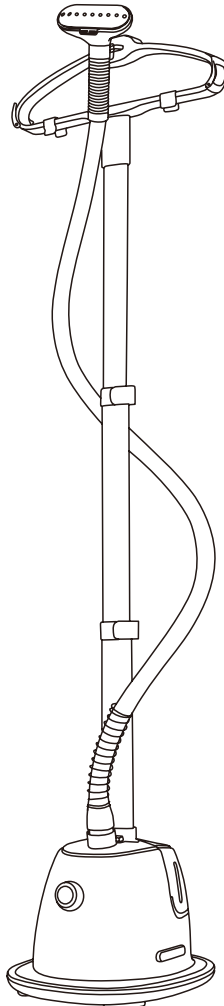


# anko

## Garment Steamer GS60-DJ User Manual



**PLEASE READ AND SAVE THESE  
INSTRUCTIONS FOR FUTURE REFERENCE**

# IMPORTANT SAFEGUARDS

When using electrical appliances, basic safety precautions should always be followed, including the following:

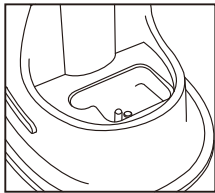
## **READ ALL INSTRUCTIONS BEFORE USING THIS GARMENT STEAMER.**

1. Do not operate another high wattage appliance in the same outlet or extension to avoid overload.
2. To reduce the risk of electric shock, do not immerse the appliance, plug, or power cord in water or other liquids.
3. If the supply cord is damaged, it must be replaced by qualified electrical person in order to avoid a hazard or the product must be disposed.
4. Do not leave the steamer unattached while it is in operation.
5. Do not operate the steamer without filling the water tank. Always check the water level before and during operation.
6. Do not lay the hose on the ground or wind it. Do not operate the appliance if hose is damaged.
7. Always keep the hose and nozzle elevated above the water tank. Never insert any object into any opening or hose.
8. Do not cut or attempt to extend the steaming hose or power cord.
9. Do not place the nozzle directly on any surface or the appliance power cord while it is hot or plugged in.
10. Be cautious about steam spraying out from the nozzle. Do not direct steam at people or animals, or use steamer on garments while they are being worn.
11. Steam only in a vertical motion. Never use steamer in horizontal position or tilt backwards, doing so may result in hot water discharge.
12. Turn off, unplug and allow the appliance to cool completely for at least 30 minutes and drain the water tank and water reservoir before storage.
13. Move the appliance by holding the telescopic ploe and then take it up for moving anywhere. Do not move the appliance by grasping the Hose.
14. Always disconnect the appliance from the outlet before filling or draining water. Be careful to avoid excess water spilling from the water reservoir.
15. Unplug the steamer from the outlet when not in use, when moving unit from one location to another and before cleaning.
16. The appliance is intended for household use only. Any other use will void the warranty.
17. Keep the appliance away from flammable materials and chemicals.
18. Do not fill the water tank with hot water or corrosive cleaning agents which could cause damage. Distilled or filtered water is strongly recommended.
19. When in use, this appliance will spray hot steam from its steam nozzle. To avoid injury from hot steam, do not aim the steam nozzle at people or pets.
20. Only use accessories provided by the manufacturer. The use of accessory attachments other than those provided by the manufacturer may result in fire, electric shock or irreversible damage to the appliance.
21. This appliance is not intended for use by persons (including children) with reduced physical, sensory or mental capabilities, or lack of experience and knowledge, unless they have been given supervision or instruction concerning use of the appliance by a person response for their safety.
22. Children should be supervised to ensure that they do not play with the appliance.
23. For Cleaning, please refer to CLEANING AND STORAGE.

## **SAVE THESE INSTRUCTIONS**

**PARTS:**

- 1.Swiveling Rack
- 2.Telescopic Pole
- 3.Steam Nozzle
- 4.Handle
- 5.Hose
- 6.Water Tank
- 7.Water Reservoir
- 8.ON/OFF Rotatory Switch
- 9.Hose Base
- 10.Pole Base
- 11.Glove
- 12.Fabric Brush
- 13.Pants Press
- 14.Hand Held Steaming Board
- 15.Hanger Hook
- 16.Hanger Clips



7

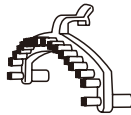
14



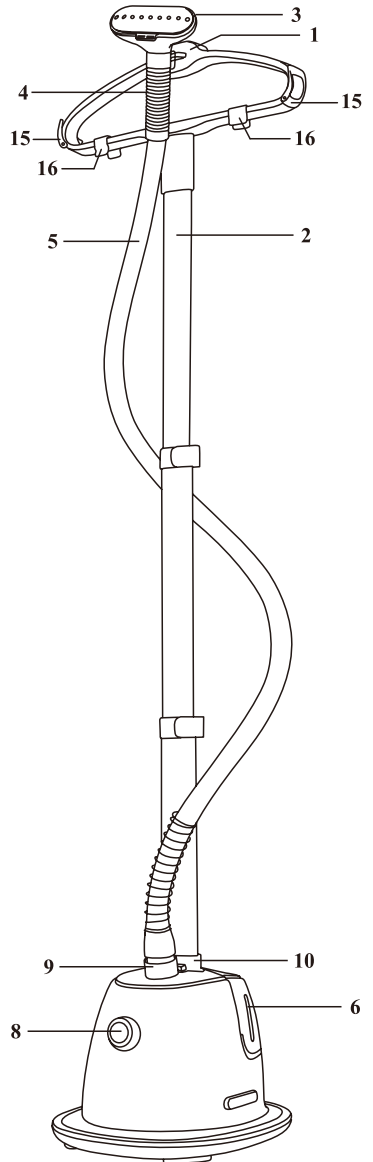
13



12



11



**Figure 1**

## **ASSEMBLY INSTRUCTIONS:**

- 1.Insert the Telescopic Pole into the Pole Base and lock in place.
- 2.To Release the Telescopic Pole, press the Telescopic Pole Release Button beside the Pole Base and pull out the Telescopic Pole.
- 3.Open the clips on the Telescopic Pole and extend it to its full length, close the clips.
- 4.Press the Hose Connector upwards and connect the Steam Hose with the Hose Base, let the Hose Connector lock in place.  
Hose Disassembly: Press the Hose Connector upwards and disconnect the Steam Hose with the Hose Base.
- 5.Insert the Swiveling Rack into the Telescopic Pole. To release the Swiveling Rack, press the Trigger on the Telescopic Pole, pull out the Swiveling Rack.
- 6.Hang the Steam Nozzle on the Hook on the Swiveling Rack.
- 7.Hang the garment on the Swiveling Rack.

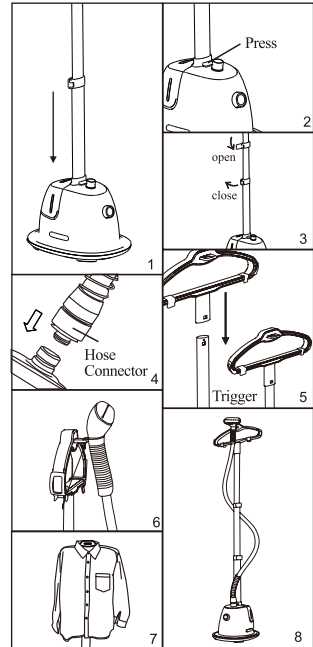
## **CAUTION:**

1. Always hang the Steam Nozzle on the hook of the Swiveling Rack when not in use to prevent steam from causing bodily injury or damage to surfaces.
2. The Telescopic Pole must be fully extended during steam operation to ensure smooth lining of the Hose and provide a free flow of steam.
3. Do not pull the Hose with excessive force or damage will occur and causing steam leakage. Do not move the appliance by grasping the Hose.

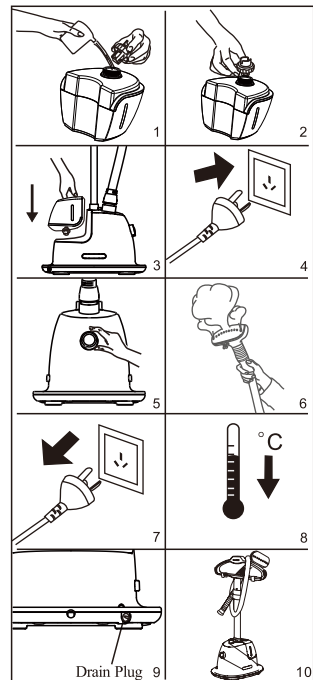
## **INSTRUCTIONS FOR USE:**

- 1.Fill the water tank with cool tap water, do not use hot water.
- 2.Fit and tighten the cap on the water tank.
- 3.Place the Water Tank back to the unit.
- 4.Plug in the unit.
- 5.Rotate the switch to “ON” position to start the unit.  
The blue indicator light will illuminate when the unit is powered ON.
- 6.Wait for approximately 45 seconds, when steam comes out, the unit is ready to use.
- 7.To switch OFF, rotate the rotary switch to OFF position, then disconnect the unit from mains power.
- 8.Wait for at least 30 minutes till the unit cools down completely.
- 9.Unscrew the Drain Plug to empty the Water Reservoir, then screw the Drain Plug .
- 10.Follow the CLEANING AND STORAGE procedure and store the unit properly.

**Caution: Ensure the drain plug is screwed tightly every time before use to prevent water/ steam from leaking.**

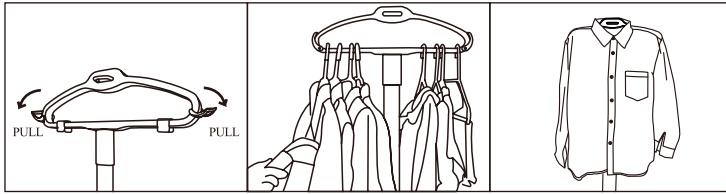


**Figure 2**



**Figure 3**

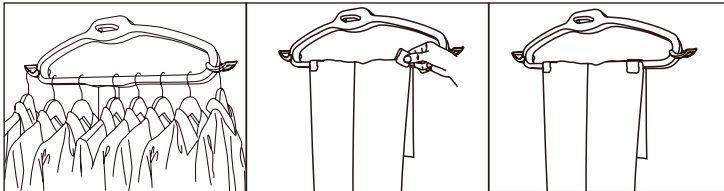
### **360° SWIVELING RACK INSTRUCTIONS:**



**Figure 4**

### **HANGER HOOK AND HANGER CLIPS INSTRUCTIONS :**

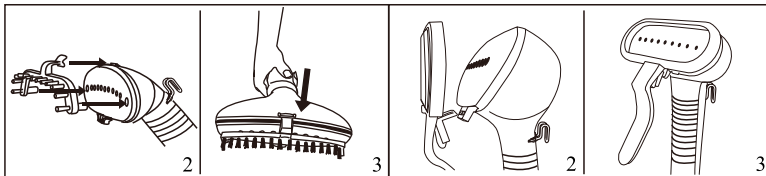
1. Use the hanger hooks to hang clothes.
2. Use the hanger clips to secure clothes on the swiveling rack.



**Figure 5**

### **FABRIC BRUSH / PANTS PRESS ASSEMBLY:**

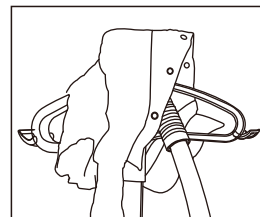
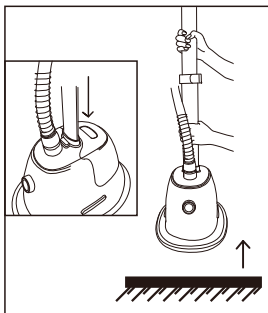
1. Switch off the garment steamer and wait until no steam emits from the Steam Nozzle.
2. Assemble the flute of Fabric Brush/Pants Press towards the peg that at the bottom of Steam Nozzle.
3. Press Push the Fabric Brush/Pants Press gently until it is firmed in place.



**Figure 6**

### **MOVING INSTRUCTION:**

Under insert the Telescopic Pole into the Pole Base and lock in place, hold the Telescopic Pole on the hand , then take it up for moving anywhere .



**Caution:** During operation, when the Steam Nozzle was hung on the hook of the Multi-functional Rack, to avoid deformation of the Multi-functional Rack, putting clothes and covering the Steam Nozzle is strongly prohibited !

## **USE INSTRUCTION OF THE PANTS PRESS:**

Press push the pants press gently on your trousers and shirts.

It can be simply used to more quickly and easily make straight trouser line comparable to that made by iron.

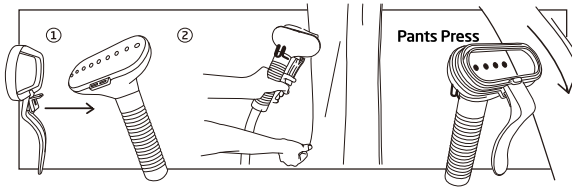


Figure 7

## **USE INSTRUCTION OF THE HAND HELD STEAMING BOARD:**

FOR COLLAR

FOR POCKET

FOR EVERY CORNER

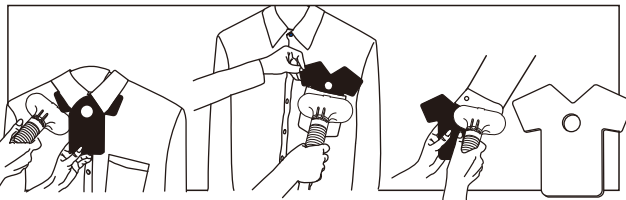


Figure 8

**CAUTION:** Do not install the accessory while steam emitting from the Steam Nozzle to avoid scald.

## **PRESSING WITH STEAM:**

1. To steam a garment, place it on a clean, rust-free clothes hanger and place the hanger on the Clothes Hanger Hook.
2. Grasp the Handle, and place the Steam Nozzle at the bottom of the garment. Steam will rise along the inside and outside of the fabric, removing wrinkles. Slowly slide the nozzle vertically, from the bottom to the top (See Figure 9) of the garment. Do not allow kinks to form in the hose at any time.
3. Remove the nozzle from bottom to top on the garment, and smooth the fabric with your free hand.
4. Repeat steps 2 and 3 as necessary until the fabric is wrinkled free.
5. Curtains and draperies can be steamed while still hanging (See Figure 9).
6. Heavier fabrics may require repeated steaming.
7. To remove stubborn wrinkles, the Fabric Brush may also be used.
8. Be careful when handling garments on the Clothes Hanger Hook. Pulling on the garment with too much force may cause the unit to tip.

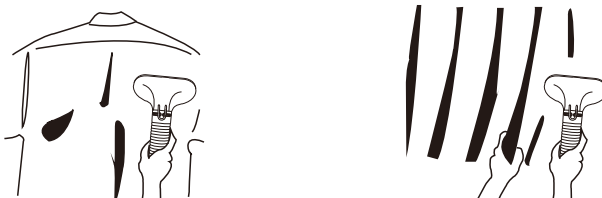
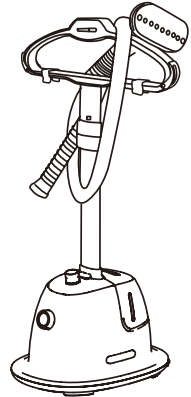


Figure 9

## **CLEANING AND STORAGE:**

We recommend you follow this procedure at least once per week.

1. Rotate the Switch to "OFF".
2. Unplug the unit from the power outlet.
3. Allow the steamer to cool for at least 30 minutes.
4. Remove the Hose and shorten the Telescopic Pole, then set them aside.
5. Remove and drain the Water Tank. Rinse the water tank with fresh water, and drain completely. Place the Water Fill Tank back on the Water Reservoir.
6. Drain the steamer by removing the Drain Plug and emptying the contents.
7. Flush the unit by filling the Water Reservoir and the Hose Connector with fresh water and draining completely. Replace the Drain Plug.
8. Wrap the Hose around the Telescopic Pole one time. Place the Steam Nozzle on the steam nozzle holder.
9. Store in a cool, dry place.



**Figure 10**

## **REMOVING MINERAL BUILD-UP:**

High mineral in many municipal water suppliers may cause mineral build-up in garment steamers. Mineral residue inside of the internal pipes and heater can result in intermittent steam or, in some cases, no steam at all. We recommend you removing the mineral build-up after using the product for 7-15 days or every month. Please follow the steps below to remove the mineral build-up:

1. Switch off and unplug the unit.
2. Remove the hose and pole from the unit.
3. Drain the Water Reservoir, and empty the Water Tank.
4. Mix a solution of 50% vinegar and 50% water. 2 cups of this solution will be sufficient.
5. Slowly pour the water-vinegar solution into the Hose Connector.
6. Wait for 40 minutes.
7. Drain the solution out of the Water Reservoir by removing the drain plug and drain the liquid into a sink or tub.
8. Drain the solution out of the Hose Connector by tilting the unit over a sink or tub and pouring the water out of the Hose Connector.
9. Pour clean water in the Hose Connector and Water Reservoir inlet, and drain. Repeat this step until the vinegar odor dissipates.
10. Reassembly the unit.

## **TROUBLE SHOOTING:**

<b>PROBLEM</b>	<b>REASON</b>	<b>SOLUTION</b>
The unit fails to steam. Indicating lamp does not illuminate.	Garment Steamer is not plugged in.	Plug in the unit.
	Household power system problem/fuse is blown.	Check the power outlet or call a qualified electrician for help.
The unit fails to steam. Indicating lamp illuminates.	Mineral build-up in the unit.	Follow the <b>Removing Mineral Build-up</b> steps.
	The Water Tank is empty.	Refill the Water Tank.
Noise in Steam Hose, Steam Nozzle stops spraying steam.	Condensation in hose.	Straight the Steam Nozzle.
Steam is intermittent.	Mineral build-up in the unit.	Follow the <b>Removing Mineral Build-up</b> steps.

## **TECHNICAL DATA**

Model no.:GS60-DJ

Voltage : 220-240Va.c. 50-60Hz

Power : 1260 - 1500W

Water tank capacity : 1.65L

Steam output time : Approx. 45 seconds



# 12 Month Warranty

Thank you for your purchase.

Your new product is warrantied to be free from defects in materials and workmanship for the period stated above, from the date of purchase, provided that the product is used in accordance with accompanying recommendations or instructions where provided. This warranty is in addition to your rights under the Australian Consumer Law.

For New Zealand customers, this warranty is in addition to statutory rights observed under New Zealand legislation.

We will provide you with your choice of a refund, repair (where possible) or exchange (availability dependent) for this product if it becomes defective within the warranty period. The business will bear the reasonable expense of claiming the warranty.

This warranty will no longer apply where the defect is a result of alteration, accident, misuse, abuse or neglect.

Please retain your receipt as proof of purchase and contact our Customer Service Centre as listed below, for the entity you purchased this product from, for any difficulties with your product. Warranty claims and claims for expense incurred in returning this product can be addressed to the respective Customer Service Centre.

Our goods come with guarantees that cannot be excluded under the Australian Consumer Law. You are entitled to a replacement or refund for a major failure and compensation for any other reasonably foreseeable loss or damage. You are also entitled to have the goods repaired or replaced if the goods fail to be of acceptable quality and the failure does not amount to a major failure.

Contact for Kmart purchases	Contact for Target purchases
Kmart Australia Ltd. C/- Customer Service Centre 690 Springvale Road, Mulgrave Vic 3170 Customer Service: 1800 124 125 (Australia) or 0800 945 995 (New Zealand) or via Customer Help at <a href="http://kmart.com.au">kmart.com.au</a>	Target Australia Pty Ltd C/- Customer Service Centre 2 Kendall Street, Williams Landing, Vic, 3027 Customer Service: 1300 753 567 or via Customer Help at <a href="http://target.com.au/help/contact-us">target.com.au/help/contact-us</a>