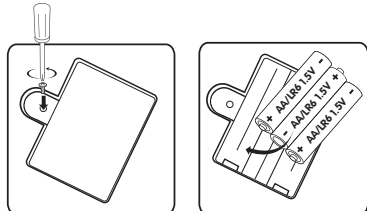


- Remove used batteries or rechargeables from the toy.
- Remove batteries when the toy is not to be used for a long period of time.
- Do not throw batteries into a fire.
- Do not attempt to open ordinary or rechargeable batteries.
- The supply terminals are not to be short-circuited.
- Never leave button-cell batteries within reach of young children.
- Batteries are harmful if swallowed, so keep them away from young children.

#### Care and maintenance

- Keep the unit out of direct sunlight and away from any direct heat source.
- If the toy suddenly stops working, the voice becomes faint or the sound seems weak, the problem may be low battery power. If this is the case, install a new set of batteries before use.

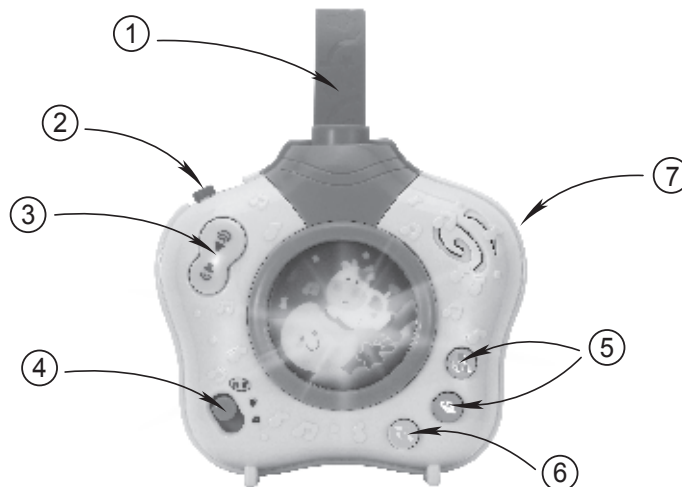
This sheet contains important information.  
Please keep all information for future reference.



42254492 Printed in China  
0301-0806-NL-KM03-001

4

# My Little Baby's Dreamland Soothing Projector



1

#### Diagram

- 1) Crib strap
- 2) Off / On (3 time selection) switch
- 3) Volume control buttons
- 4) Mode selection switch
- 5) Instrument / Nature sound selection buttons
- 6) Light pattern button
- 7) Battery compartment (back)

#### Adult assembly requirements

Caution! To ensure your child's safety, this product must be assembled by an adult.

<p>1. Place the unit in the crib bringing the strap over the top rail. Slip the top of the strap under the slot on the back of the unit and secure. You can adjust the hanging height by choosing the appropriate hole on the top of strap.</p>	
<p>2. Pull slightly on the unit to make sure the strap has been securely fastened. The unit should be snug against the crib rail. Check frequently to ensure it is still secure.</p>	

#### Important

- The unit must be assembled by an adult.
- Check frequently and ensure that the crib attachment strap is securely locked into position to avoid injury.
- Please follow the above instructions carefully and make sure the final assembly is correct.
- Attach only to cribs with sturdy rails and spindles. Do not attach to playpens with mesh walls.
- Please make sure the crib attachment strap is out of reach of children when placed in the crib.
- Please ensure the crib light is positioned upright with the projection light facing directly upwards.
- Please remove the plastic strap and do not give it to the child when the toy stands alone.
- **WARNING!** Prevent Entanglement Injury. This product may not attach to all crib designs. Do not add additional strings or straps to attach to crib or playpen.

2

- Wipe the projector with a clean cloth dampened with a mild soap and water solution. Do not immerse the projector in water.

#### How to use

##### Off / On (3 time selection) switch

To turn the unit on, slide the Off / On (3 time selection) switch to the 5,10 or 15 minute time setting. To turn the unit off, slide the Off / On (3 time selection) switch to the OFF position.

##### Mode selection switch

Slide the mode selection switch to choose one of the three play modes. (🎵) plays lights and music, (🎧) plays the music with no lights, (💡) plays lights only.

##### Instrument / Nature sound selection buttons

Press the instrument / nature sound selection buttons to choose one of the two settings. Press the instrument button (🎹) for instrument sounds. Press the button again to change to a different instrument sound. Press (🌿) to play nature sounds only.

##### Light pattern button

Press the light pattern button (🌈) to change the light pattern.

##### Volume control buttons

Press the volume control buttons to choose the desired volume. Press the right button to increase the volume and press the left button to decrease the volume.

#### Battery installation

- Make sure the toy is switched OFF (if applicable).
- Use a screwdriver to open the battery cover located at the back of the toy.
- Install the required batteries according to the diagram inside the battery compartment. Alkaline batteries are recommended.
- Replace and secure the battery cover.
- Batteries must be installed and replaced by an adult.

#### Battery notice

- The use of rechargeable batteries is not recommended.
- Non-rechargeable batteries are not to be recharged.
- Do not mix old and new batteries.
- Do not mix alkaline, standard (carbon zinc) or rechargeable batteries.
- Only batteries of the same or equivalent type as recommended are to be used.
- Batteries are to be inserted according to the correct polarity (+ and -). Incorrect insertion can damage the unit, provoke fire or cause the batteries to explode.
- Rechargeable batteries are only to be charged under adult supervision (if removable).
- Rechargeable batteries are to be removed from the toy before being charged (if removable).

3