

# 3-In-1 Playpen

› fits openings: 73cm - 376cm

6-24  
months

## Instruction Manual



SCAN HERE FOR MORE INFORMATION  
ON INSTALLATION OR SPARE PARTS.

OR VISIT: [CHILDSAFETYHELP.COM.AU](http://CHILDSAFETYHELP.COM.AU)



**IMPORTANT! READ AND FOLLOW THESE INSTRUCTIONS  
CAREFULLY AND KEEP FOR FUTURE REFERENCE.**

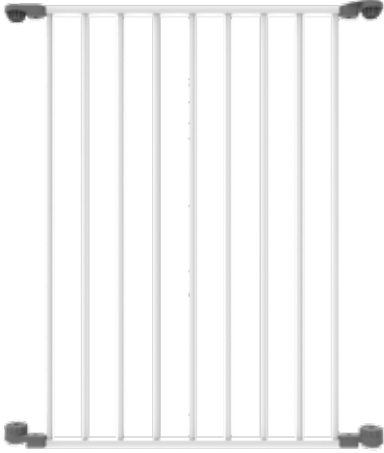
# ● WARNINGS

- WARNING** To prevent serious injury or death, securely install gate or enclosure and use according to manufacturer's instructions.
- WARNING** Never leave child unattended when using this product.
- WARNING** Incorrect installation can be dangerous.
- WARNING** Do not use the safety barrier if any components are damaged, missing or disassembled.
- WARNING** The safety barrier must not be fitted across windows.
- WARNING** Never use with a child able to climb over or dislodge/open the safety barrier which may cause danger.
- WARNING** Never install this product on glass doors. Install this product against reliable doors or walls.
- WARNING** To prevent falls, never use this product at the top of stairs.
- WARNING** If the safety barrier is used at the bottom of the stairs, it should be positioned at the front of the lowest tread possible.
- WARNING** To prevent injury, do not put any goods which can be grabbed by children or pets near this product.
- WARNING** Before using this product, carefully inspect for any loose parts and whether any parts need to be tightened.
- WARNING** Ensure the product to be installed is horizontal and flat on the floor.
- WARNING** This product is intended for use with children from 6 to 24 months or small to medium pets.
- WARNING** Regularly check that the safety barrier is properly installed and secure.

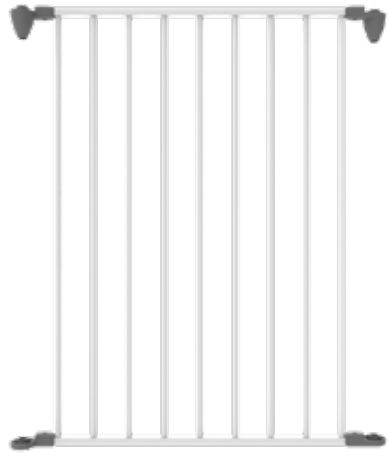
# ● WARNINGS

- WARNING** Any additional or replacement parts should be obtained from Kmart Australia Ltd.
- WARNING** Barrier must be fitted between rigid surfaces such as plaster board, timber or hardwall.
- WARNING** Always check that the safety barrier is correctly closed.
- WARNING** Use only with the locking/latching mechanism securely engaged.
- WARNING** This safety barrier is for domestic use only.
- WARNING** Never use without wall brackets.
- WARNING** This safety barrier has a manual closing system.
- WARNING** This safety barrier must be fitted between a rigid surface such as doorways or walls along with wall brackets secured with screws.
- WARNING** A maximum of 6 panels including gate can be used as a safety barrier.
- WARNING** Check regularly that all assembly fittings are tightened properly.
- WARNING** Do not use the playpen close to an open fire or other heat source.
- WARNING** Do not leave anything in the playpen which may provide a foothold or create a danger of suffocation or strangulation.
- WARNING** Ensure that the playpen is fully erected and all the locking mechanisms engaged before placing your child in the playpen.

**PARTS**  
INCLUDES



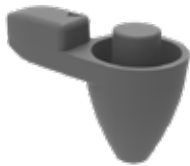
3 x  
Topside Barrier Panels



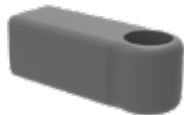
2 x  
Underside Barrier Panels



1 x  
Gate Panel



1 x  
Top Underside  
Hinge Adapter



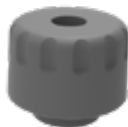
2 x  
Bottom Hinge  
Adapters



2 x  
Wall Brackets



2 x  
Topside  
Hinge Adapters



2 x  
Top Caps

2 x  
Wall Bracket Covers



1 x  
Bottom Cap



10 x  
Screws



10 x  
Wall Plugs



7 x  
Corner Tubes

# ● INSTALLATION

## UNDERSIDE BRACKET WALL ASSEMBLY

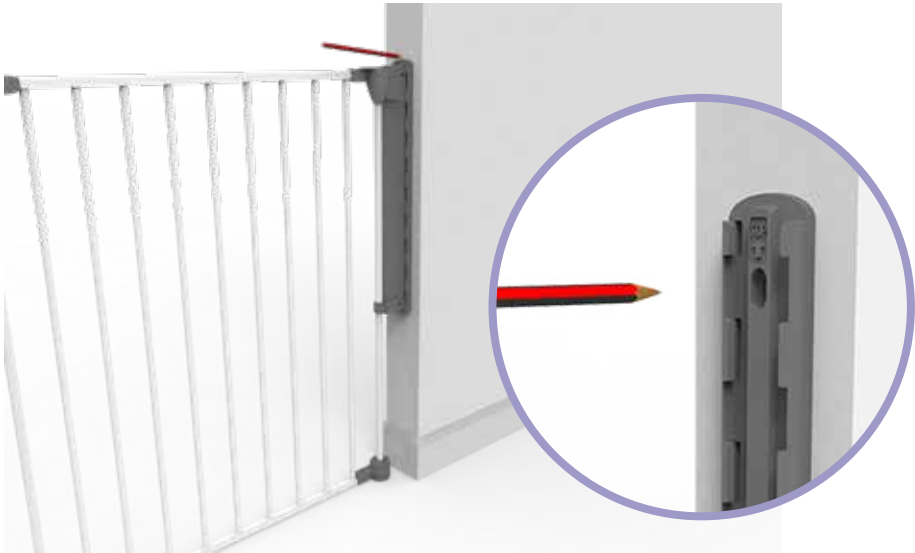
1. Place the Bottom Hinge Adapter over Corner Tube, and then put the Corner Tube into the Top Underside Hinge Adapter.
2. Compress the spring into the top hole and slide the base of the Corner Tube into the Top Cap.



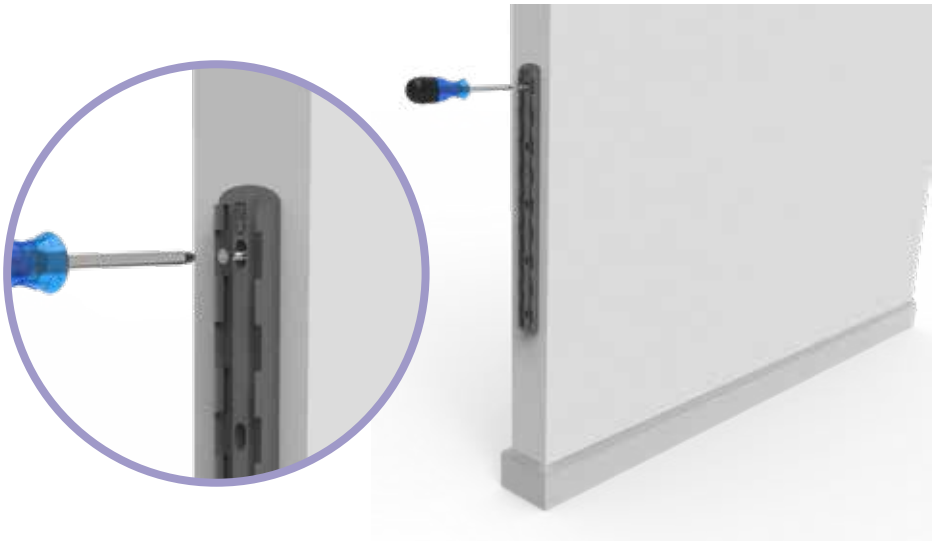
- 3.** Place Wall Bracket over Wall Bracket Covers. Clip Cover to hinges - Top Underside Hinge Adapter and Bottom Hinge Adapter. Ensure the small silver studs on the adapters are positively engaged in cover.



- 4.** Place the assembled barrier against the wall and mark position. Remove Wall Bracket from cover, hold in marked location, and mark screw positions.



- 5.** Screw into surface with the appropriate fixing method.





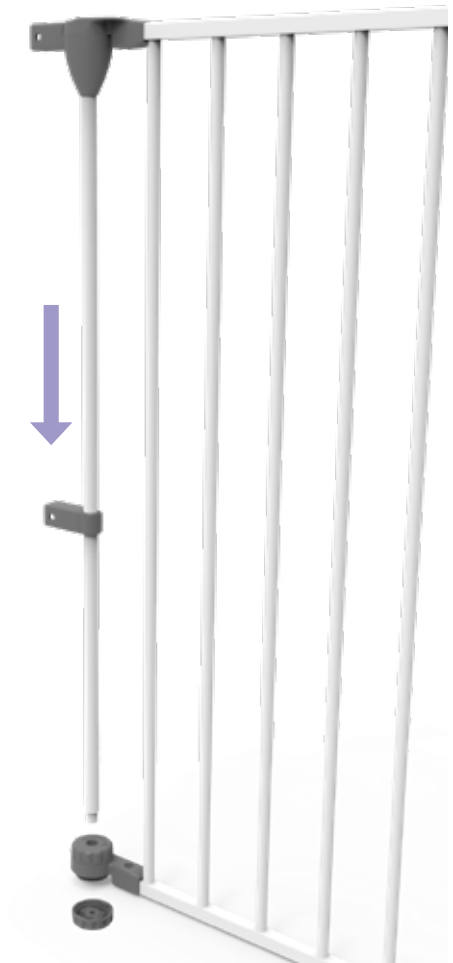
6. Slide Wall Bracket Cover into the Wall Bracket, and then push Top Underside Hinge Adapter and Bottom Hinge Adapter into the Wall Bracket Cover.



# ● INSTALLATION

## TOPSIDE BRACKET WALL ASSEMBLY

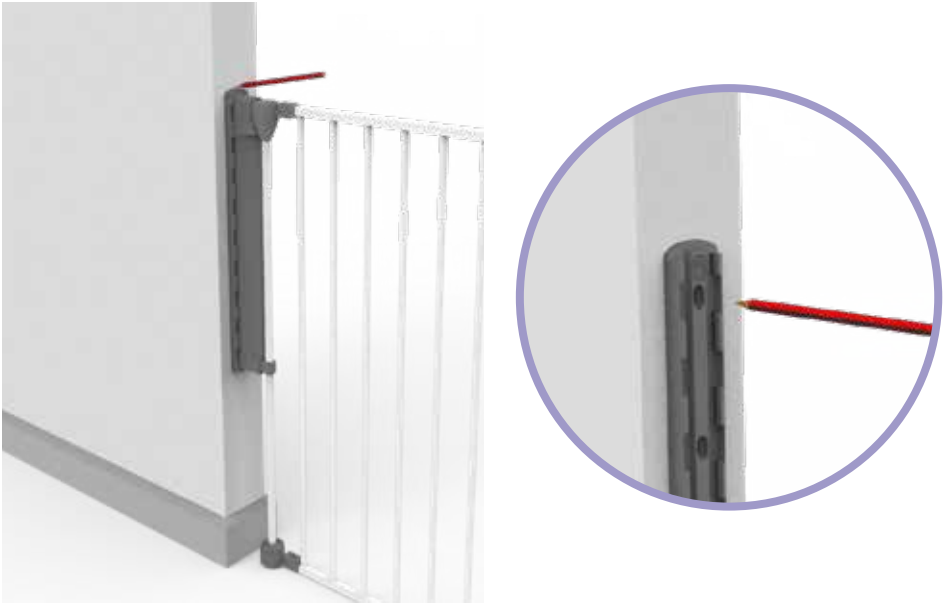
1. Place the Bottom Hinge Adapter over Corner Tube, and then put the Corner Tube into the Topside Hinge Adapter.
2. Compress the spring into the top hole and slide the base of the Corner Tube into the Bottom Cap.



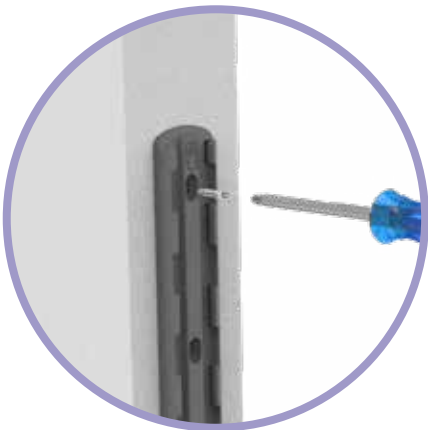
- 3.** Place Wall Bracket over Wall Bracket Covers. Clip cover to hinges - Topside Hinge Adapter and Bottom Hinge Adapter. Ensure the small silver studs on the adapters are positively engaged in cover.



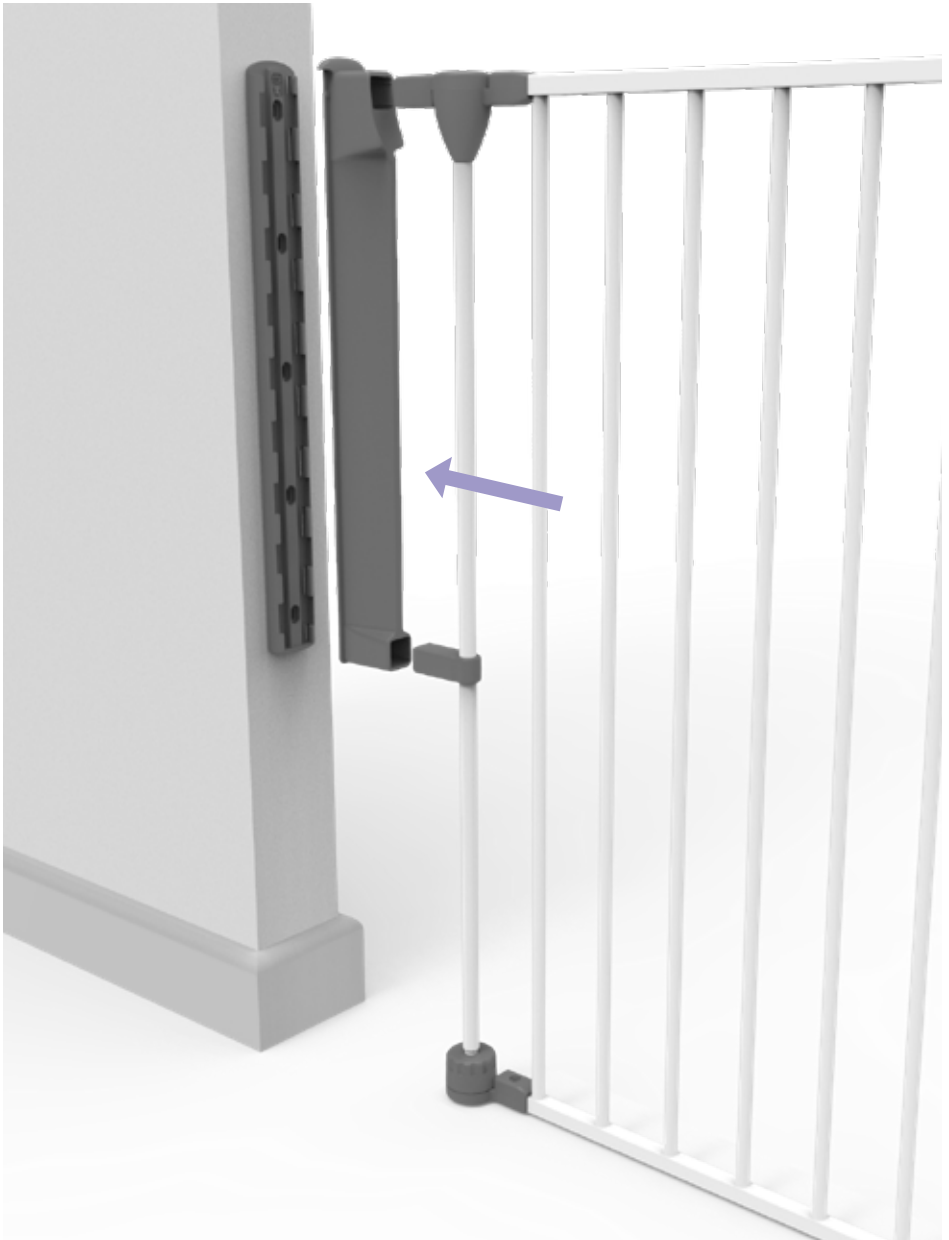
- 4.** Place the assembled barrier against the wall and mark position. Remove Wall Bracket from cover, hold in marked location, and mark screw positions.



- 5.** Screw into surface with the appropriate fixing method.



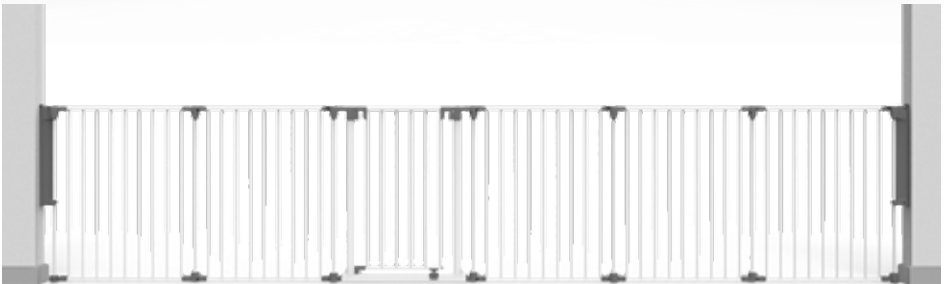
6. Slide Wall Bracket Cover into the Wall Bracket, and then push Top Underside Hinge Adapter and Bottom Hinge Adapter into the Wall Bracket Cover.



# ● INSTALLATION

## ROOM DIVIDER OR SAFETY BARRIER

Up to 6 panels including the gate may be used in open configurations providing the 2 end panels are securely fixed to a wall with the fixings provided.



# ● INSTALLATION

## PLAYPEN ASSEMBLY

1. Align the Gate Panel and one of the other panels together. Place the Corner Tube into the top hole first, pull the Corner Tube up so you can position the bottom of the Corner Tube into the base knob. Align arrow with hexagon icon.



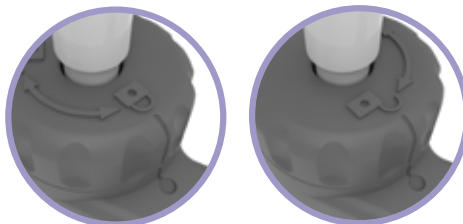
2. Repeat step 1 for all sides and corners.



3. Turn base knob and align lock icon with dot on panel to lock and unlock panels.

LOCKED

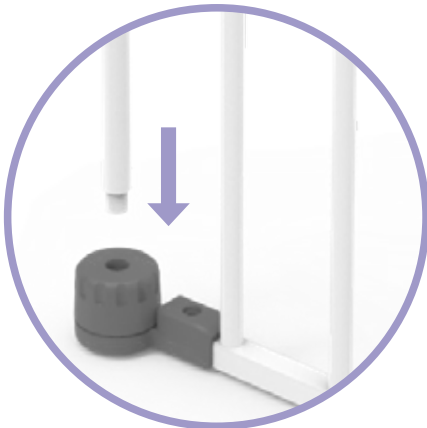
UNLOCKED



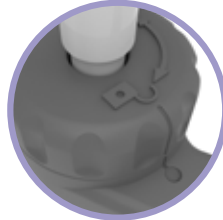
# ● INSTALLATION

## TO ADD EXTRA PANELS

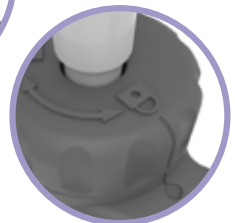
1. Align opposite ends of panels, place the Corner Tube into the top hole first, then pull the Corner Tube up so you can position the bottom of the Corner Tube into the base knob.



UNLOCKED



LOCKED



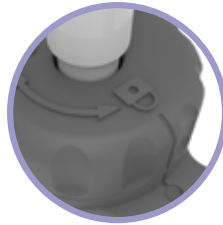


# ● INSTALLATION

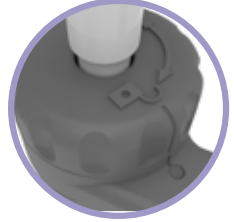
## TO REMOVE PANELS

1. Turn base knob to the unlocked position, pull up on the Corner Tube and slide the bottom of the Corner Tube out from the base knob. With the Corner Tube removed, you can lift and remove the unwanted panel.

LOCKED



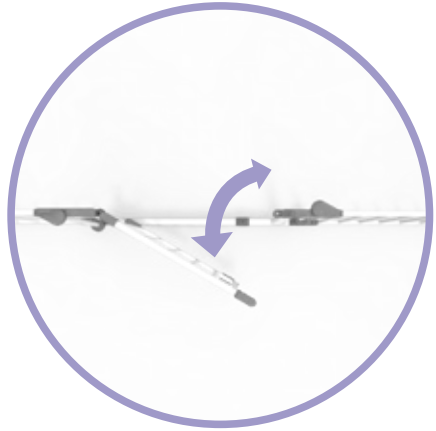
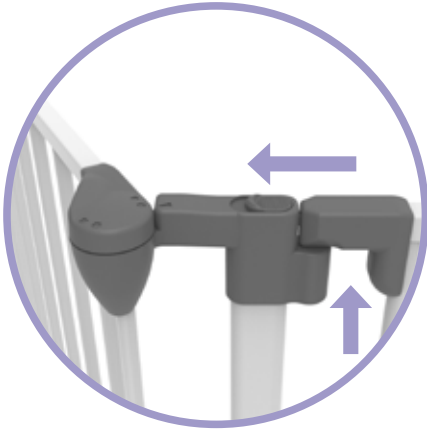
UNLOCKED



# ● OPERATION

## HOW TO OPEN

1. Using one hand, place thumb on the button and grip gate with fingers. Slide button and lift gate, then open gate in either direction. When released, gate will swing closed automatically.



**Always check gate is properly closed.**

2. To enable stay open feature, completely open gate to a 90° angle.



# ● OPERATION

## CLEANING INSTRUCTIONS

Simply use a soft damp cloth to wipe barrier and dry thoroughly after cleaning. Do not use chemical or abrasive cleaners.



**IMAGES/DRAWINGS IN THE MANUAL ARE FOR VISUAL PURPOSES ONLY.  
ACTUAL PRODUCT MAY VARY SLIGHTLY. THE MANUFACTURER RESERVES THE  
RIGHT TO CHANGE ANY SPECIFICATION OR FEATURE WITHOUT PRIOR NOTICE.**

**KEYCODE: 42-193-715**

**MADE IN CHINA**

© KMART AUSTRALIA LIMITED

FOR AU / NZ: IMPORTED FOR KMART STORES IN AUSTRALIA AND NEW ZEALAND.

KMART AUSTRALIA - 690 SPRINGVALE ROAD, MULGRAVE, VIC 3170 AUSTRALIA.

KMART NEW ZEALAND - REGIONAL OFFICE C/O KMART PAPATOETOE STORE,  
HUNTERS PLAZA, GREAT SOUTH ROAD, PAPATOETOE, AUCKLAND, NEW ZEALAND.

**KMART CUSTOMER SERVICE**

**AU: 1800 124 125 NZ: 0800 945 995**

**AFTER SALES SUPPORT:**

**AU: 03 9005 0127 NZ: 0800 945 995**

**[WWW.CHILDSAFETYHELP.COM.AU](http://WWW.CHILDSAFETYHELP.COM.AU)**



**SCAN HERE FOR MORE INFORMATION  
ON INSTALLATION OR SPARE PARTS**

**OR VISIT: [CHILDSAFETYHELP.COM.AU](http://CHILDSAFETYHELP.COM.AU)**